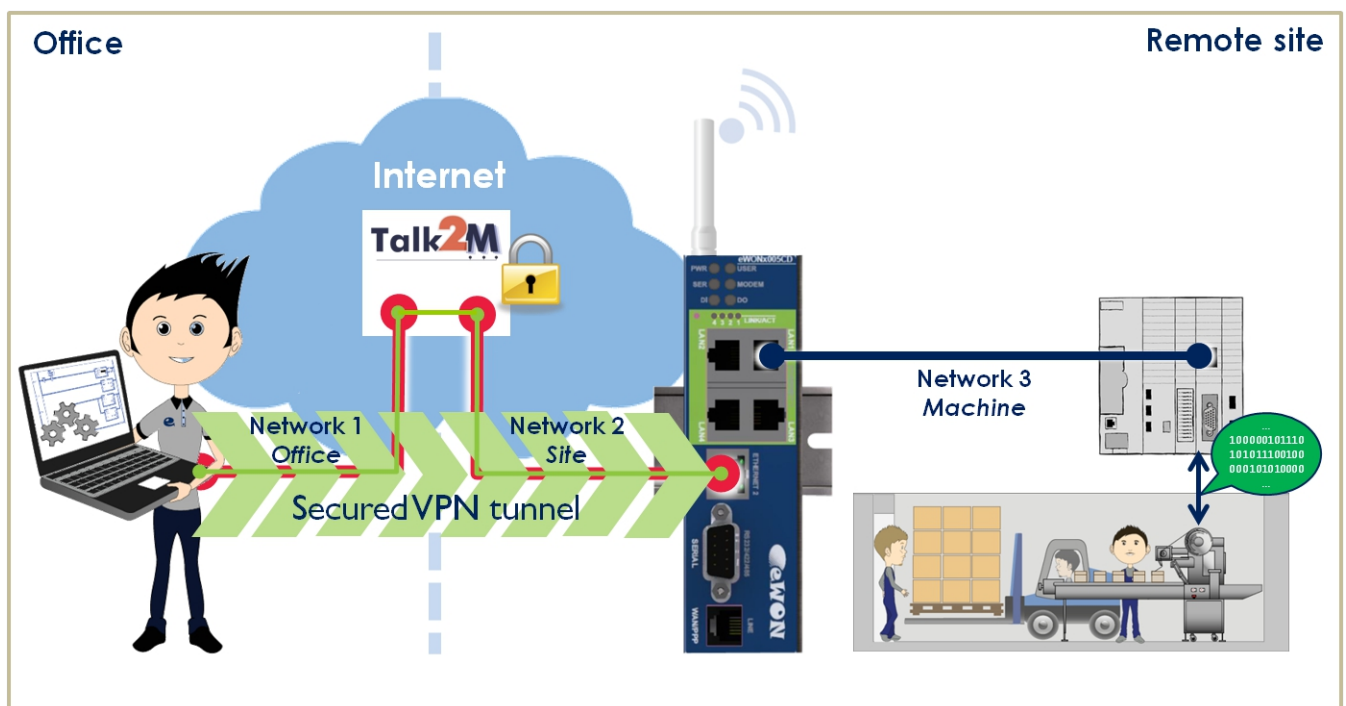


Talk2M - Service Free+ Getting Started



Content

This document is describing how to establish a remote connection with a device through your eWON using the VPN tunnelling utility Talk2M service Free+.

Note: this document does not apply to the eWON COSY

1. Introduction.....	<u>3</u>
2. Hardware and Software Requirements.....	<u>4</u>
2.1. Hardware Requirements.....	<u>4</u>
2.2. Software Requirements.....	<u>4</u>
2.3. eWON Firmware Version.....	<u>4</u>
3. Create your Free+ Account on Talk2M	<u>5</u>
4. Log into your Free+ Account	<u>7</u>
5. Create an eWON on your Free+ Account	<u>8</u>
6. Configure the eWON Internet Connection.....	<u>11</u>
7. Configure the Talk2M Connection on your eWON.....	<u>13</u>
8. Establish the Remote Connection to your eWON.....	<u>16</u>
8.1. Wake-up the eWON	<u>17</u>
9. Terminate the Remote Connection	<u>18</u>
10. Reach Ethernet Devices Behind the eWON.....	<u>19</u>
10.1. Ethernet Device Configuration.....	<u>19</u>
10.2. Talk2M Configuration.....	<u>19</u>
11. Add Users to your Free + Talk2M Account.....	<u>21</u>
12. Specify the Custom Field Names.....	<u>23</u>
13. Troubleshooting.....	<u>25</u>
13.1. Connecting to Internet using a Proxy Server.....	<u>25</u>
Revisions.....	<u>27</u>

Here I suggest to put a table showing all currently available T2M documents (see related analysis)

1. Introduction

Talk2M Free+ is the free version of our Talk2M VPN tunneling service.

For more details on Talk2M see: <http://www.talk2m.com/>

This document covers the following subjects:

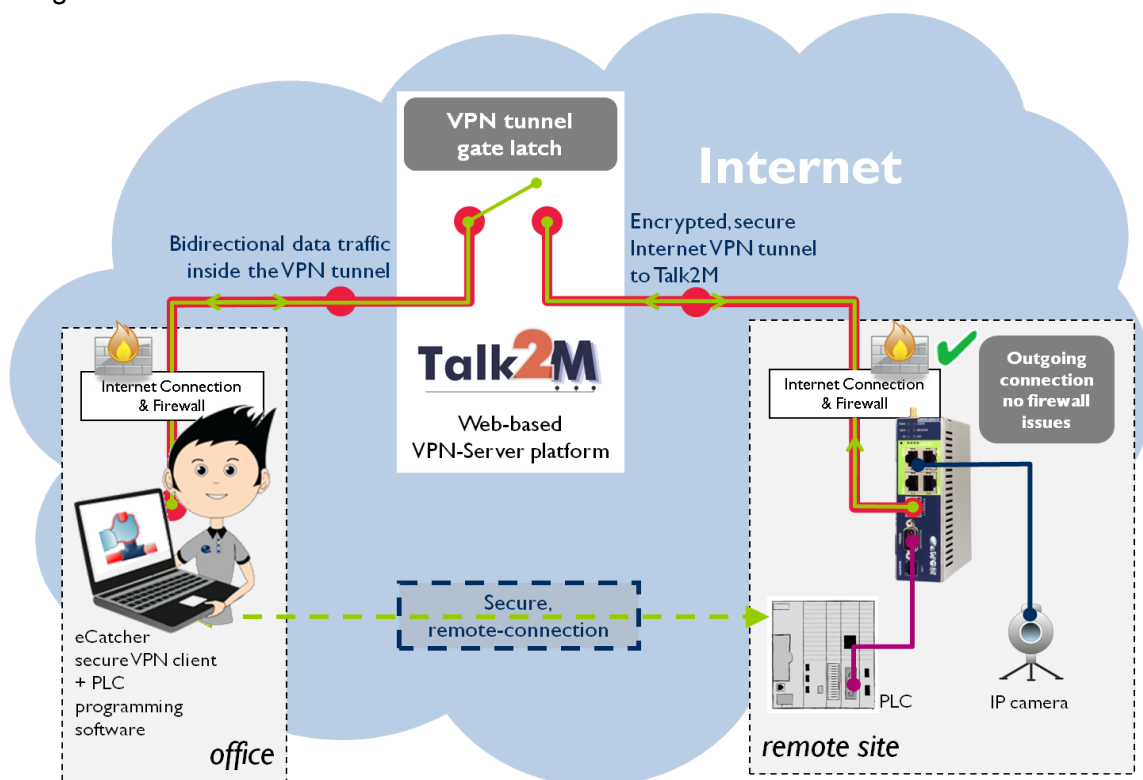
- Create your Free+ account on Talk2M
- Log into your Free+ account
- Create an eWON on your Free+ account
- Configure the Internet connection on your eWON
- Configure the Talk2M connection on your eWON
- Establish the remote connection to your eWON

It does not cover:

- how to install eCatcher
- the features of the Pro Service including how to configure User Groups, eWON Pools, etc

If you need information about these steps, please check the Talk2M document overview in § xyz

Diagram of a Talk2M connection:



2. Hardware and Software Requirements

2.1. Hardware Requirements

In order to follow this guide you will need:

- 1 eWON with VPN capabilities. For example an eWON with second Ethernet interface (2005CD/4005Cd) or an eWON with integrated modem (2101CD/4101CD).
- **Note:** this guide does not apply to the eWON COSY because of its simplified interface featuring the Quick Launch 1-2-3 configuration wizard. To understand how to configure an eWON COSY for Talk2M please refer to our video tutorials here: <http://wiki.ewon.biz/COSY>

2.2. Software Requirements

eWON configuration software:

The eWON is configured through its web server. All you need is a standard Web Browser software like Internet Explorerⁱ or Firefoxⁱⁱ.

Additionally we suggest you download the eBuddy utility on our website : <http://support.ewon.biz>.

This utility allows you to list all the eWONs on your network and to change the default IP address of an eWON to match your LAN IP address range. With eBuddy you can also easily upgrade the firmware of your eWON (if required), or create a Backup of the eWON configuration.

Other software:

eCatcher V4 or higher must be installed on your PC to establish the remote connection using Talk2M. You can upgrade your existing version in the download section of our <http://wiki.ewon.biz/talk2m>.

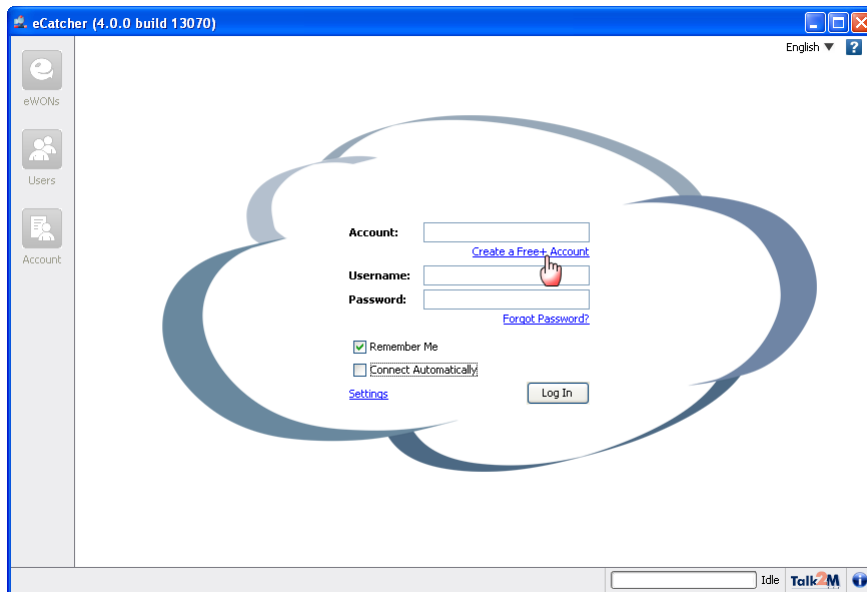
2.3. eWON Firmware Version

To be able to follow this guide your eWON needs a firmware version 6.1s2 or higher. A simple way to upgrade your eWON's firmware is to use eBuddy, the eWON software companion.

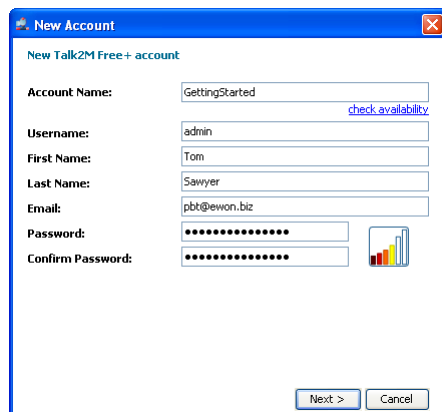
3. Create your Free+ Account on Talk2M

To establish a remote connection to your eWON using Talk2M, you will need to install the eCatcher software on your PC. The eCatcher software version 4 can be found here: <http://support.ewon.biz/softwares.htm>

Download and install the software on your PC. Once the eCatcher software is installed, you can launch eCatcher to create your Free+ account on the Talk2M server.



Click on the "Create a Free+ account" link and the following window will show up:



Enter the **Account name** you want to create and specify the **User name**, **Password** and **Email** address for your account.

Password strength gauge: When entering your new password, a password strength gauge helps you to rate the password you intend to use. The gauge is presented under the form of a bar-graph of which the respective bars are progressively getting colored as you type. The closer to the highest bar, becoming green then, the safer your password is. This indicator is not linked with the password strength enforcement policy (see AUG-056-0-EN eCatcher 4 Security Features with a Talk2M free+ Account).

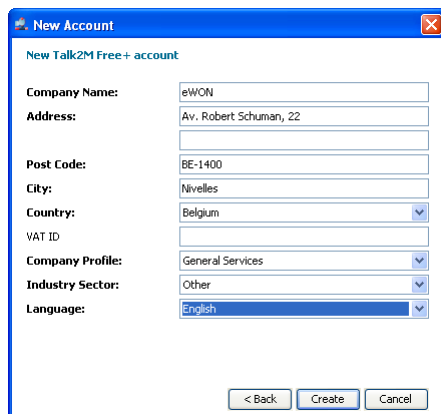
For the **Account name** choose, for example, the name of your company. The Free+ service allows you to create multiple users on the same account. Choose a generic name for the account instead of using your own name.

Use the "**check availability**" link under the account name field to check if the Account name you entered is still available or not.

By default, "admin" is proposed for the user name of the first created user account, but you can change it.

Once all the fields are entered click on *Next*.

The next window will allow you to enter detailed information about your company.



New Account

New Talk2M Free+ account

Company Name:

Address:

Post Code:

City:

Country:

VAT ID:

Company Profile:

Industry Sector:

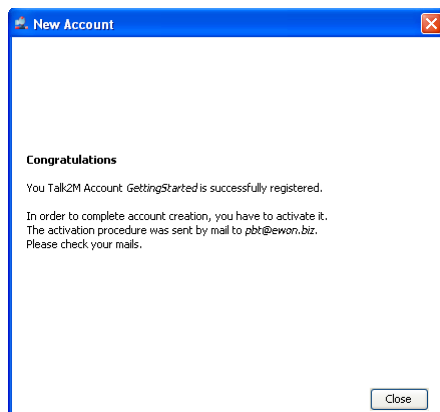
Language:

< Back Create Cancel

These fields are not mandatory.

Once you are finished, click on the **Create** button to create your account.

A message indicating that your account was successfully registered will be displayed.



New Account

Congratulations

You Talk2M Account GettingStarted is successfully registered.

In order to complete account creation, you have to activate it.
The activation procedure was sent by mail to pbt@ewon.biz.
Please check your mails.

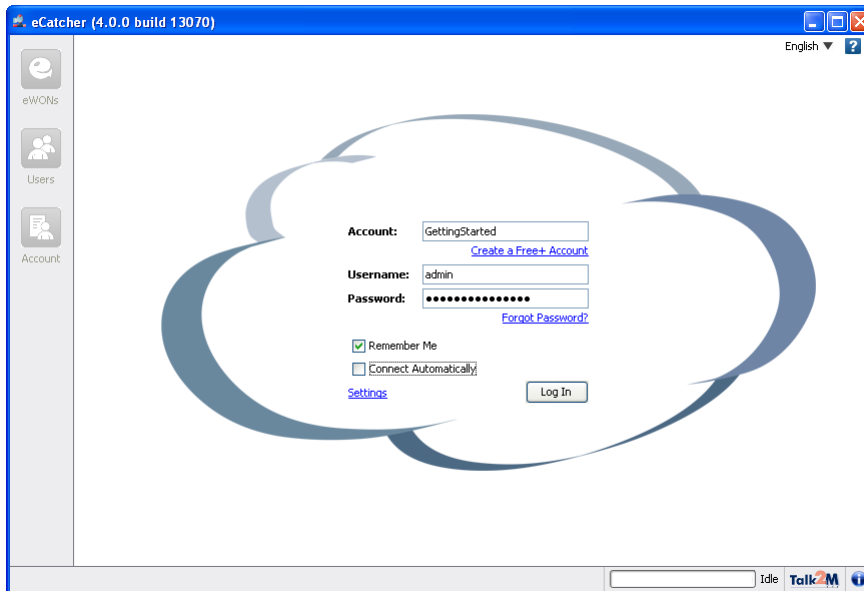
Close

Note: In order to complete your account creation, you have to activate it. The activation procedure is sent to the email address you entered. Please check your emails.

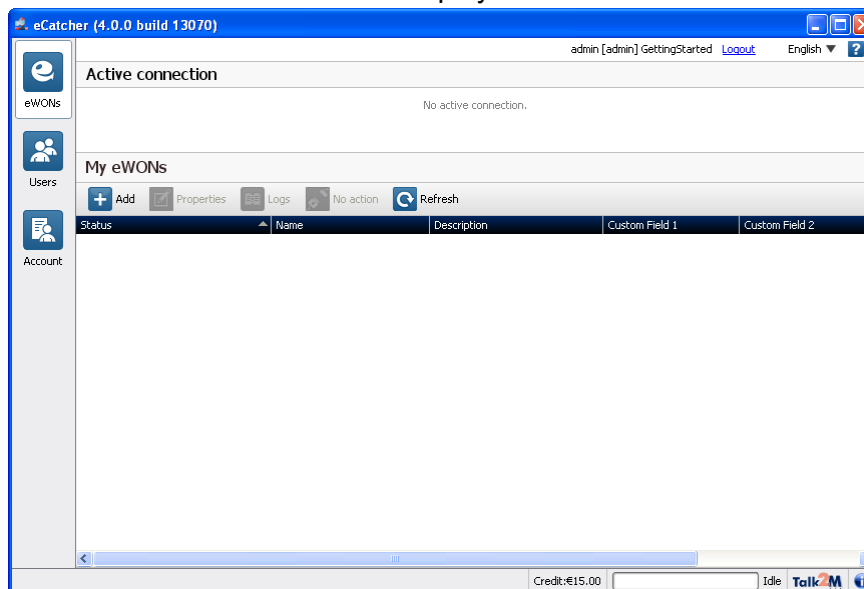
Click **Close**. Wait for the email to come in and activate your account as required.

4. Log into your Free+ Account

Once your Free+ account has been created, you can log into your Talk2M account. Launch the eCatcher software, specify the Username, Password and your Talk2M Account to log into the Talk2M service. If you created your account just before, then the login information will be filled in automatically.

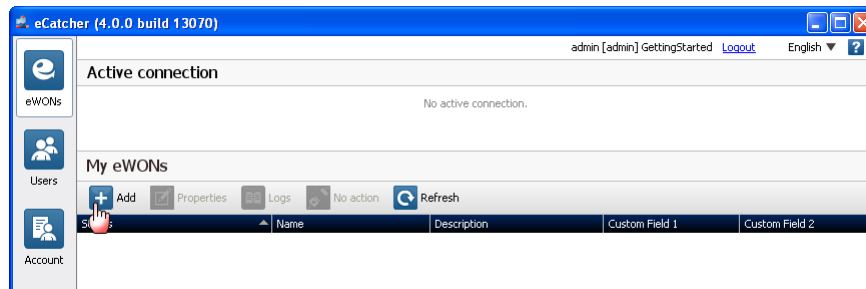


The eCatcher interface will be displayed:



5. Create an eWON on your Free+ Account

On the menu on the left side of the eCatcher interface click on the **eWONs** button (default view).



To add a new eWON on your account, click on the **"+ Add"** icon in the eWON list section. The following window shows up:

Enter the **eWON name** you want to use on the Talk2M server to identify the remote connection to your eWON.

NOTE: We recommend not using special characters in Ewon names as they might create problems while using M2web.

For the **Connection Type** specify how your eWON will be connected to the Talk2M server: Using a **Permanent LAN/ADSL/3G** connection, using a **Triggered GPRS/EDGE/3G** connection or using an Internet connection over a PSTN connection (analog modem).

If you specify a **Triggered GPRS/EDGE/3G** connection, then you will be asked to specify the phone number. This will allow Talk2M to wake up your eWON remotely using a Wake-Up SMS as specified later in this document.

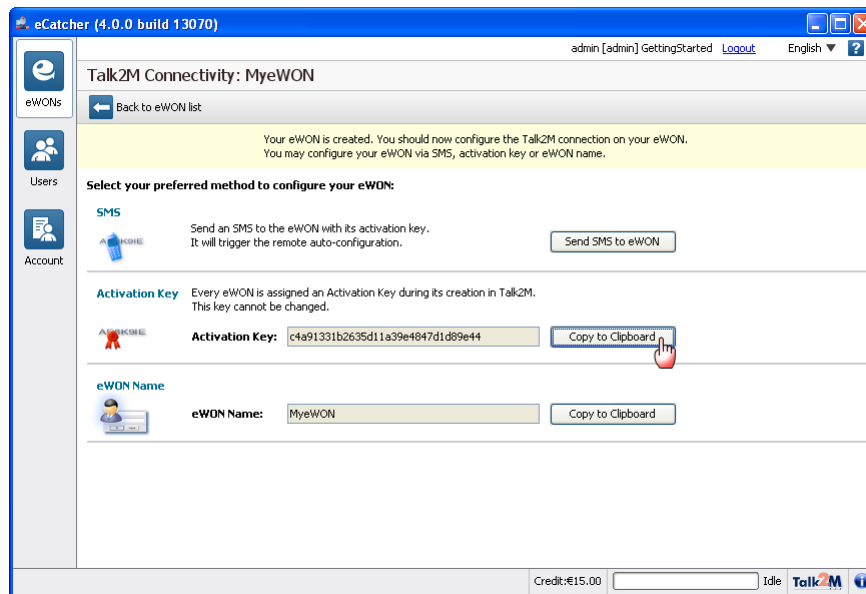
Click **Next**.

Here you can enter additional information concerning your remote connection. The **Custom Fields** can be used to classify or filter your different remote connections. This will allow you to find easily the eWON you need to connect to.

In this example, we entered "Belgium" and "Siemens PLC" to indicate the country where the eWON is placed and the PLC type which can be reached behind the eWON. The Custom Field names can be modified as explained later in this document.

Click on **Create** to add the eWON to the eWON list of your Talk2M account.

The **Talk2M Connectivity** page opens:



During the Talk2M connection wizard of your eWON you will need an activation key which will allow the eWON to get back the VPN keys and certificates needed for the VPN connection.

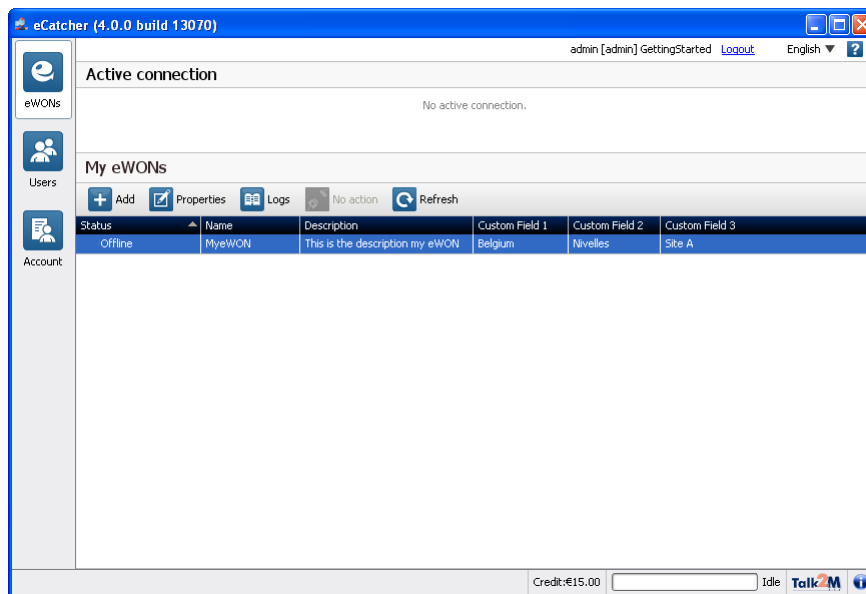
Under the **Configure via Activation Key** section you will find the Activation Key needed for the eWON configuration. Click on the **Copy** icon to copy the activation key into the clipboard of your PC.

Note: Next to the eWON configuration using the Activation Key there are also 2 other configuration methods:

- **Configure via eWON Name:** During the eWON Talk2M wizard, instead of using the Activation Key you can also specify the **eWON Name** and use the user name and password of your Free+ account.
- **Configure via SMS:** If your eWON has a GSM modem and if the eWON is already configured for Internet connection, then you can also send an SMS to the eWON containing the activation key. When eWON receives the SMS, it will then trigger automatically the Talk2M connection wizard and will configure itself to connect to the Talk2M server.

Click **Back to eWON list**.

The new eWON is now displayed in **My eWONs** list section in the central part of the window.



6. Configure the eWON Internet Connection

Now connect to your eWON to configure its Internet connection. You must connect to the LAN side of your eWON to configure it.

Note: If you are connecting to an eWON for the first time, we suggest you read the "Quick Start Guide for eWON" which has been shipped with your eWON. This document explains step by step how to change the IP address of the eWON LAN port in order to be able to connect to it.

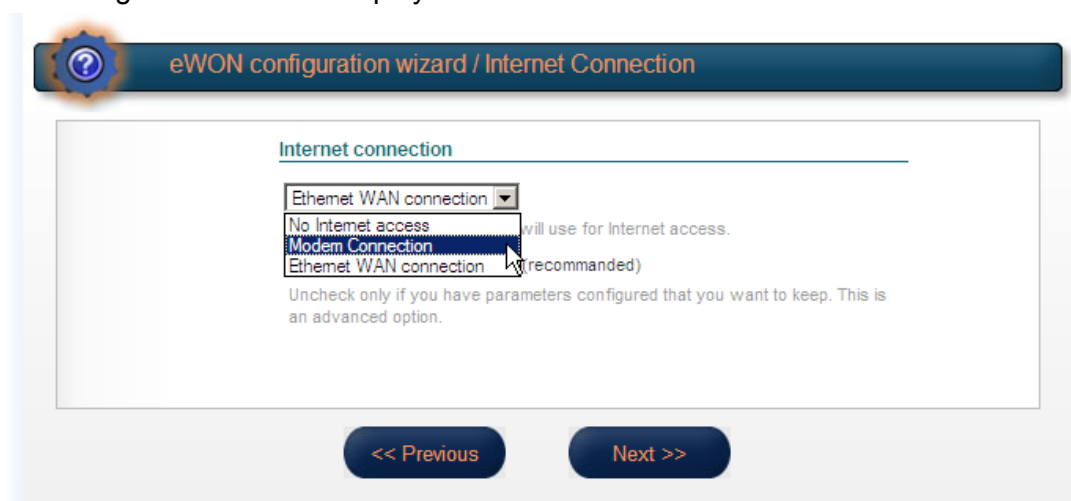
The easiest way to configure the Internet connection of your eWON is to use the integrated Internet connection wizard.

To open the eWON wizard page, click on **Configuration** in the toolbar and then on the wizard icon .

The following page will be displayed:



Click on the icon next to **Configure INTERNET Connection** to launch the wizard. Following window will be displayed:



According to your eWON type (with a modem or a second Ethernet interface), you will have the possibility to choose between different connections:

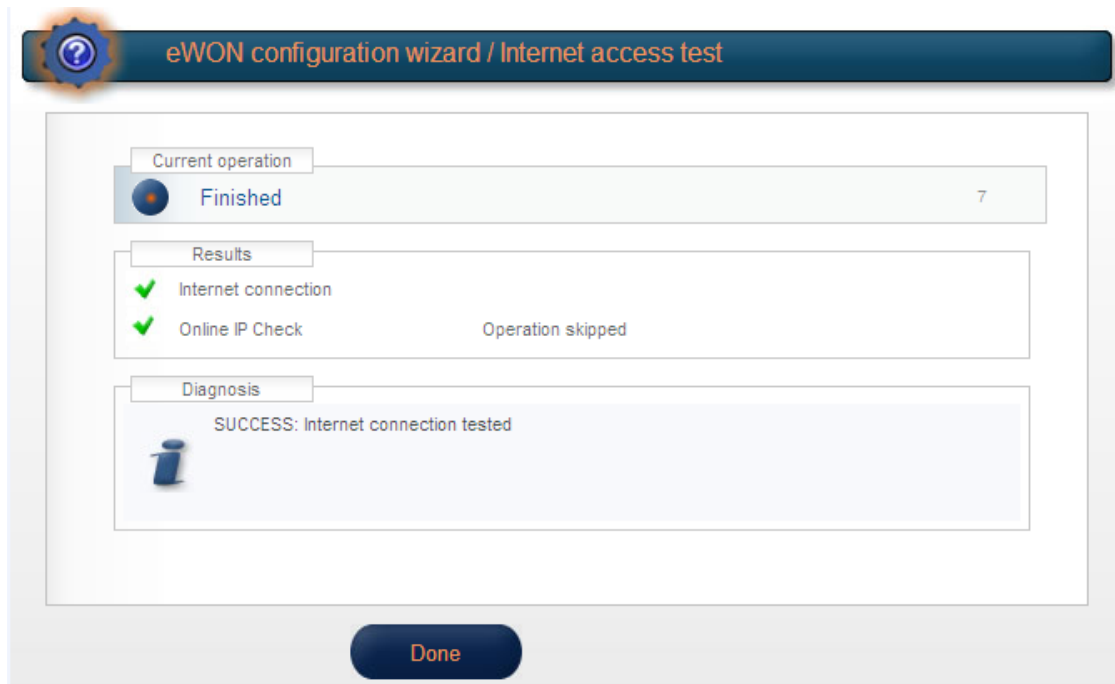
- *Modem Connection*
- *Ethernet WAN connection*
- *ADSL*

If you want to establish the Internet connection using the second Ethernet port of the eWON to connect using the Internet access of the Company network, then choose **Ethernet WAN connection**.

If you want to establish the connection using a GPRS/EDGE/HSUPA connection, then choose the **Modem Connection** option.

Follow the different steps to complete the Internet connection wizard.

Once the wizard has completed, eWON should display a message like in the screen shot displayed below:



The Internet Connection ✓ means that the eWON is correctly configured for an Internet connection.

The **Online IP Check** ✓ means that the eWON was actually able to reach an IP address on Internet.

Detailed information of the use of the wizard can be found in following document: AUG-019-0-EN-(eWON Configuration for Internet Access Using the Wizard)

http://support.ewon.biz/docs/Talk2M_Free.htm

7. Configure the Talk2M Connection on your eWON

Now that the eWON is configured for the Internet connection, you can launch the Talk2M connection wizard. This will configure the VPN settings inside the eWON to allow the remote connection using Talk2M services.

To open the eWON wizard page, click on **Configuration** in the toolbar and then on the wizard icon.

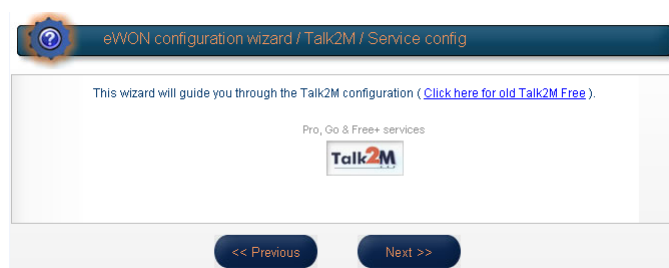


The wizard window will open:

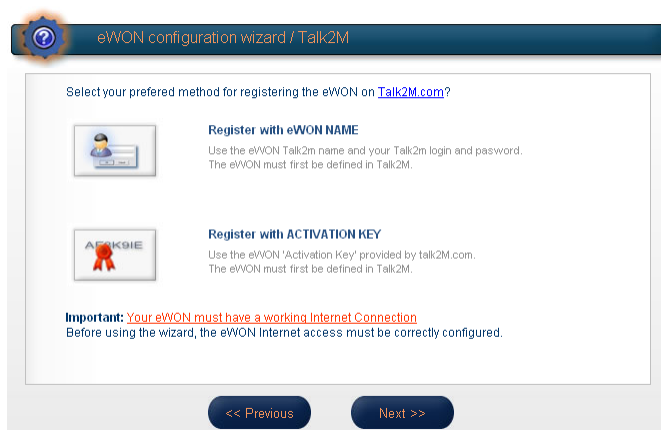


Click on the **Talk2M** wizard.

The following window will be displayed:

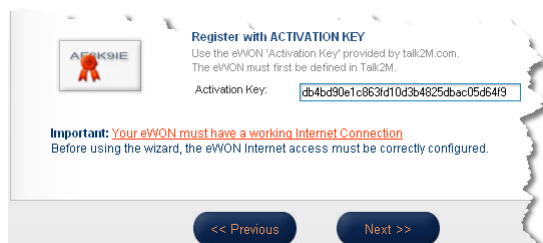


Click on **Next** to register the eWON on the Talk2M server.



Specify if you want to launch the Talk2M registration using the **Activation Key** or using the **eWON Name**.

In the previous chapter we copied the Activation Key to the clipboard of our PC, so we will use the Activation Key for the registration.

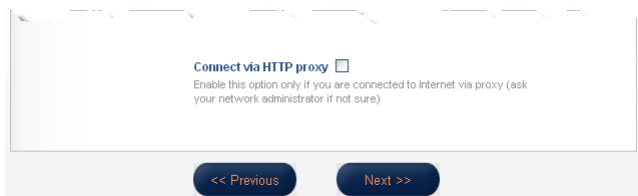


Click on the **Register with Activation Key** option and enter the Activation Key (Ctrl + V).

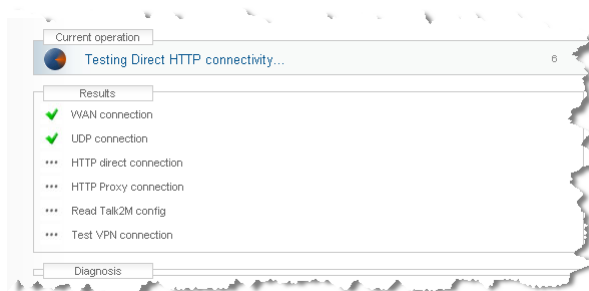
Then click on **Next**.

Note: If you use the "registration with eWON NAME" method, then you will be asked to enter the Name you specified for the remote connection in your Talk2M account. You will also need to specify your Talk2M account name and enter the user name and the password which you use to connect to your Talk2M account.

The next window of the wizard will ask you if you need to connect through a Proxy server.

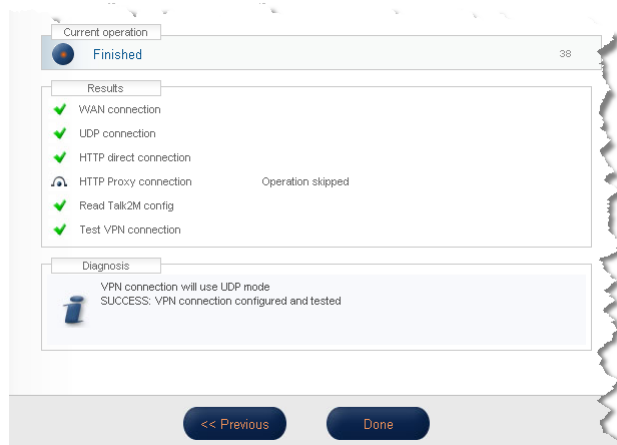


Only check this option if you need to specify a Proxy server for the Internet connection. Otherwise leave this option unchecked and click on **Next**.



The Talk2M registration will now start and the result will be displayed on the wizard page:
The eWON will first test the different connections needed to connect to the Talk2M server (UDP and HTTP or HTTP using a Proxy).

Then the eWON will connect to the Talk2M server and retrieve the VPN keys.
At the end, the eWON will establish the VPN connection to the Talk2M server.
Once the registration and configuration of the eWON have finished, the result will be displayed on the Wizard page as shown in the following picture:

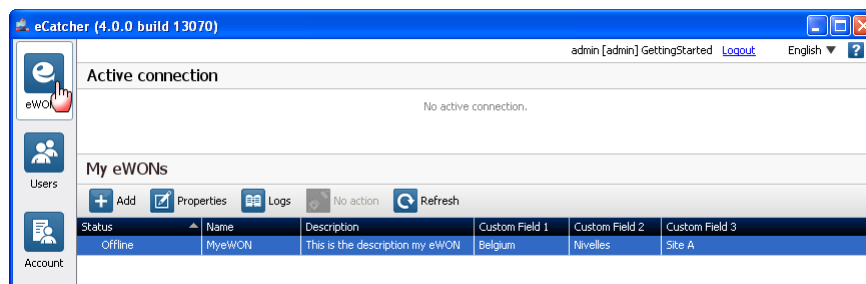


Click on the **Done** button to close the wizard.
Your eWON is now configured to connect to the Talk2M server.

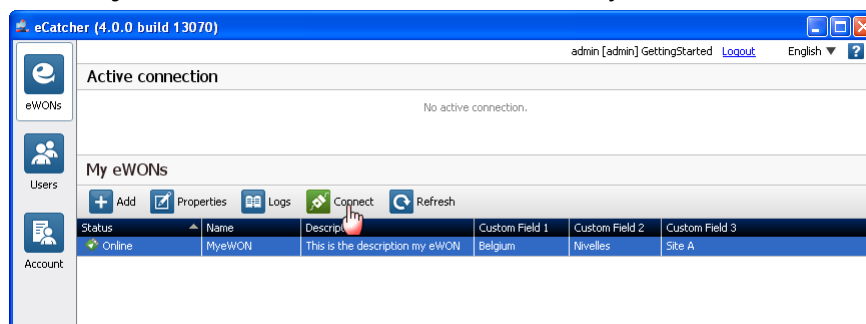
8. Establish the Remote Connection to your eWON

Now that the eWON is configured to connect to Talk2M, we can establish the remote connection to the eWON.

Log into your Talk2M Free+ account and display the **eWONs** page (default view).



In the **My eWON** list section select the eWON you want to use for the remote connection.



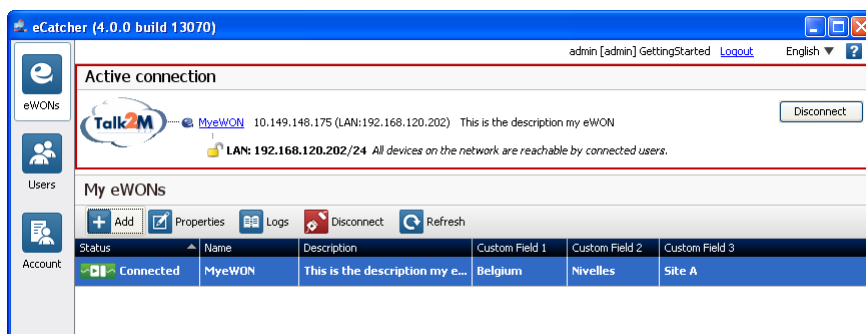
The eWON which you just configured should now be displayed as on line (green icon in the **Status** column).

This means that the eWON has established its VPN connection to the Talk2M server.

To establish the remote connection using this eWON, double-click the **online icon** or click on the **Connect** button displayed in the eWON list menu.

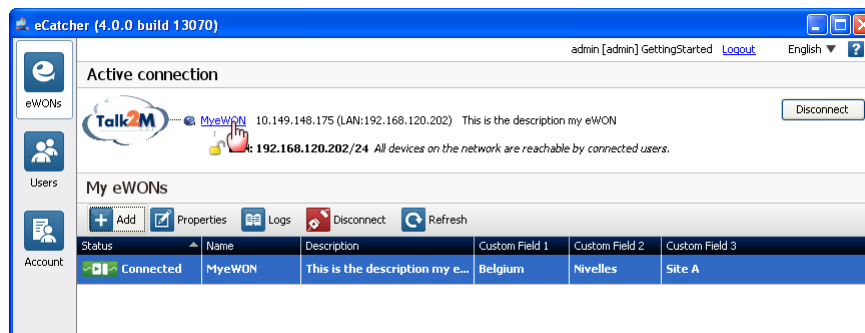
eCatcher will now establish the VPN connection to the Talk2M server.

Once the VPN connection to the eWON is established, the eWON will be displayed in the **Active connection** section on the top of the window.



The PC is now connected to the eWON using the VPN tunnel and you can start to use the remote connection.

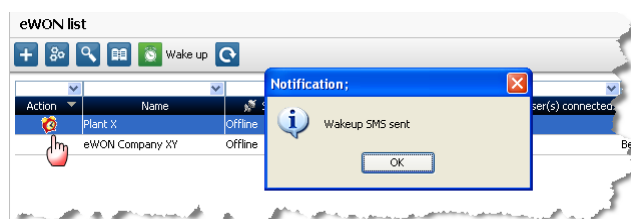
If you want to display the eWON Web page, click on the eWON link in the **Active Connection** section, as displayed in the following picture.



Your Web Browser should show up displaying the eWON Web pages using the VPN IP address of the eWON.

8.1. Wake-up the eWON

If you use an eWON GPRS, then you probably configured the eWON not to stay connected all the time to the Talk2M server. Before being able to connect to the eWON over Talk2M you will first need to wake-up the Talk2M connection of the eWON. To do this, click on the **Wake-up** icon in front of the eWON name as shown in the following picture:

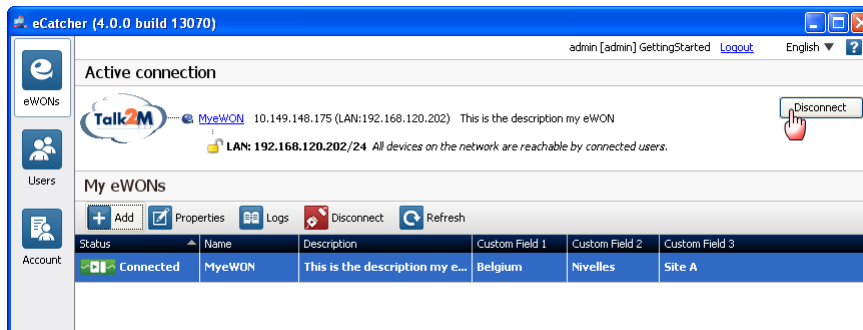


Talk2M will then send an SMS (text message) to the eWON to ask the eWON to start its Internet connection and to connect to the Talk2M server.

After a while the eWON will then be displayed as online in the eWON list. Once the eWON is online, you can then click on the connect button as explained above to establish the remote connection.

9. Terminate the Remote Connection

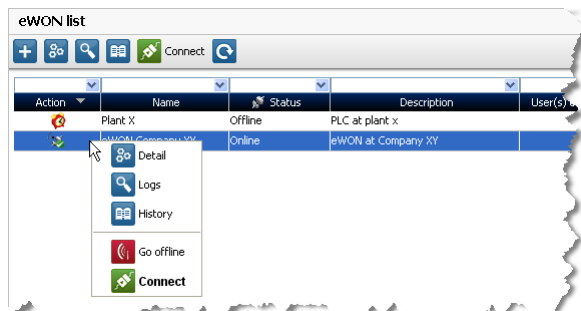
Once you finished your remote connection, click on the disconnect button in the Active connection section. This will close the VPN connection with the eWON.



If the eWON to which you were connected uses a Modem connection for the Internet access, then you probably want to close the Internet connection of the eWON (to save GPRS communication costs).

To do this, right-click on the **Online** icon in front of the eWON. In the context menu click on the **Go offline** button to send the disconnect request to the eWON.

The eWON will then close its Internet connection and after a while the eWON will be displayed as offline in your Talk2M account.



10. Reach Ethernet Devices Behind the eWON

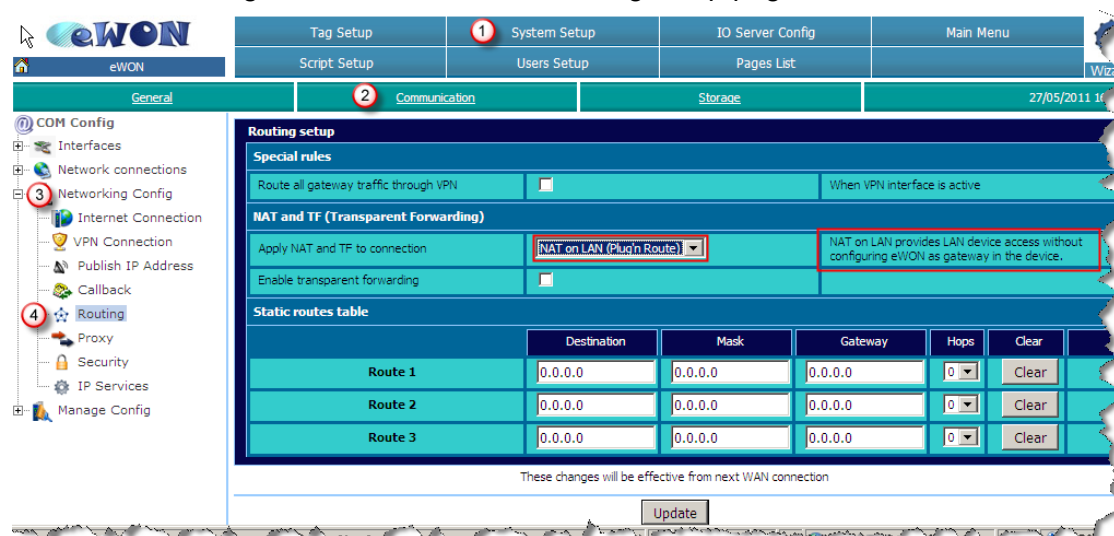
Probably you do not just want to connect to the eWON, but you want to connect to the Ethernet devices behind the eWON.

To allow this, the following conditions must be fulfilled:

10.1. Ethernet Device Configuration

Since eWON firmware version 6.2s0, the **Plug'n Route** function automatically routes the connected Ethernet devices. So nothing special has to be configured on the Ethernet device behind the eWON.

The Plug'n Route function is automatically activated when the Talk2M wizard is executed. You can check the Plug'n Route feature in the routing setup page of the eWON like shown below:



Note: For earlier eWON firmware versions, the eWON LAN IP address has to be manually specified as gateway on the connected device (see our device manufacturer specific user guides).

10.2. Talk2M Configuration

Since firmware version 6.2s0, when launching the eWON Talk2M wizard to enter the Talk2M-key, the wizard transfers the eWON LAN IP address to Talk2M automatically.

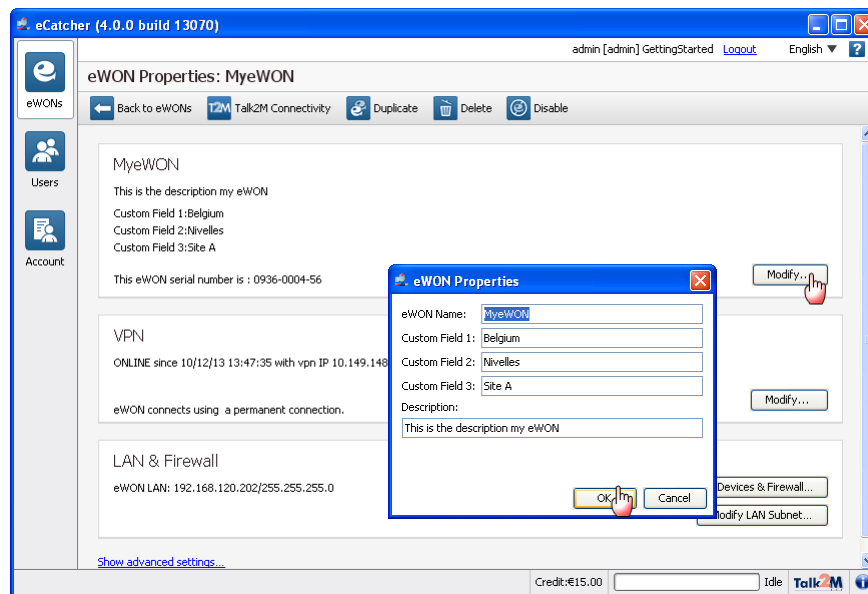
You can check, and if necessary, modify these settings, in eCatcher. Under the eWON list



select the Name of the remote connection and click on the **Properties** button.

The **eWON Properties** window will open:

Here you will find the different information you entered earlier. The **Remote Network** is specified under the **Remote connection** section.



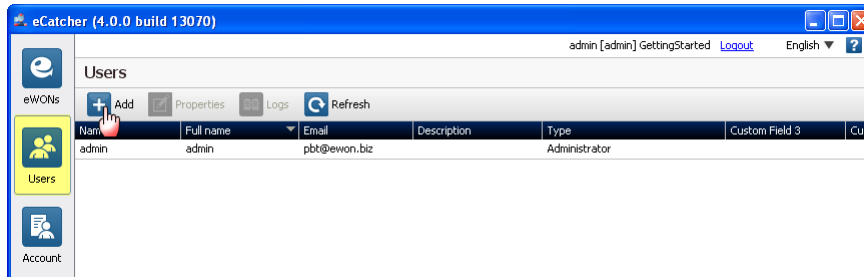
The IP address displayed in the LAN Firewall area should correspond with the LAN IP address of your eWON.

To edit the eWON Properties, click on **Modify...**.
Once the modification is finished, click on **OK**

11. Add Users to your Free + Talk2M Account

You can add other users to your Free+ Account on the Talk2M server.

Open the User window on your account using the **Users** menu displayed on the left side of the eCatcher interface. The following window will be displayed which lists all the different users configured on your Talk2M account:



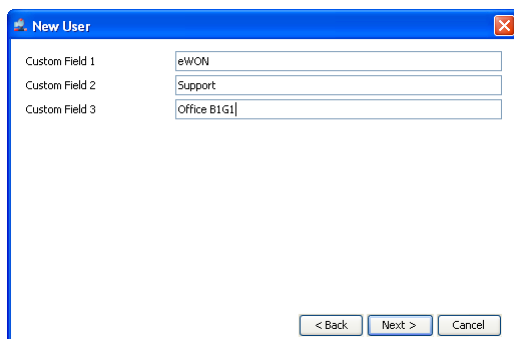
To add a new user click on the **" + Add "** icon on the top of the window. The following window will be displayed:

Enter the **User Name**, **Email** address and **password** for the new user. The admin user that creates a new user can check the following check-boxes:

- **User must change...** is usually checked when the admin user assigned a password for the user.
- **Name is public** gives the ability to make the name of the connected user public. This option, if checked, will make the user name visible to other logged users of the account in the "connected user" column of the eWON list.
- **May edit own properties** allows the user to change properties such as his name, email, and password. It does not give the user rights to modify his own permissions.
- **May change password** allows the user to change his password.

Password strength gauge: When entering your new password, a password strength gauge helps you to rate the password you intend to use. The gauge is presented under the form of a bar-graph of which the respective bars are progressively getting colored as you type. The closer to the highest bar, becoming green then, the safer your password is. This indicator is not linked with the password strength enforcement policy (see AUG-056-0-EN eCatcher 4 Security Features with a Talk2M free+ Account).

Click **Next**.



New User

Custom Field 1: eWON

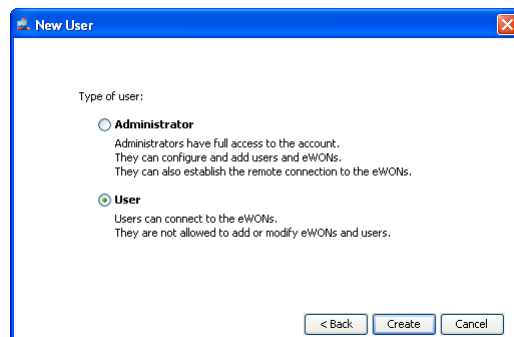
Custom Field 2: Support

Custom Field 3: Office B1G1

< Back Next > Cancel

If you want, you can specify the Custom fields for this user account. The custom fields allow you to enter additional information to the customer account and will allow you to easily find and filter out users in the user account list.

Click **Next**.



New User

Type of user:

☐ **Administrator**
Administrators have full access to the account. They can configure and add users and eWONs. They can also establish the remote connection to the eWONs.

☒ **User**
Users can connect to the eWONs. They are not allowed to add or modify eWONs and users.

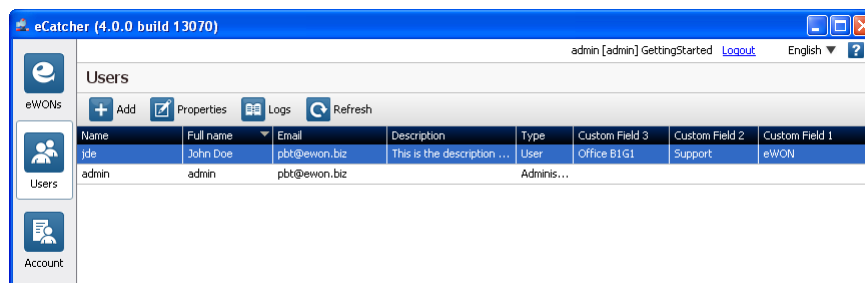
< Back Create Cancel

Here you can specify the access rights for the user. You can choose between **Users** or **Administrators**

Administrators will have full access to the account. They can configure and add users, configure and add eWONs and they can also establish the remote connection to the eWON.

Users will be able to establish the remote connection to the eWON. They will not be able to add or modify users on the Talk2M account.

Click **Create**.



eCatcher (4.0.0 build 13070)

admin [admin] GettingStarted Logout English ?

Users

+ Add Properties Logs Refresh

Name	Full name	Email	Description	Type	Custom Field 3	Custom Field 2	Custom Field 1
jde	John Doe	pbt@ewon.biz	This is the description ...	User	Office B1G1	Support	eWON
admin	admin	pbt@ewon.biz		Adminis...			

Left sidebar: eWONs, Users, Account

The new user appears in the **User List**:

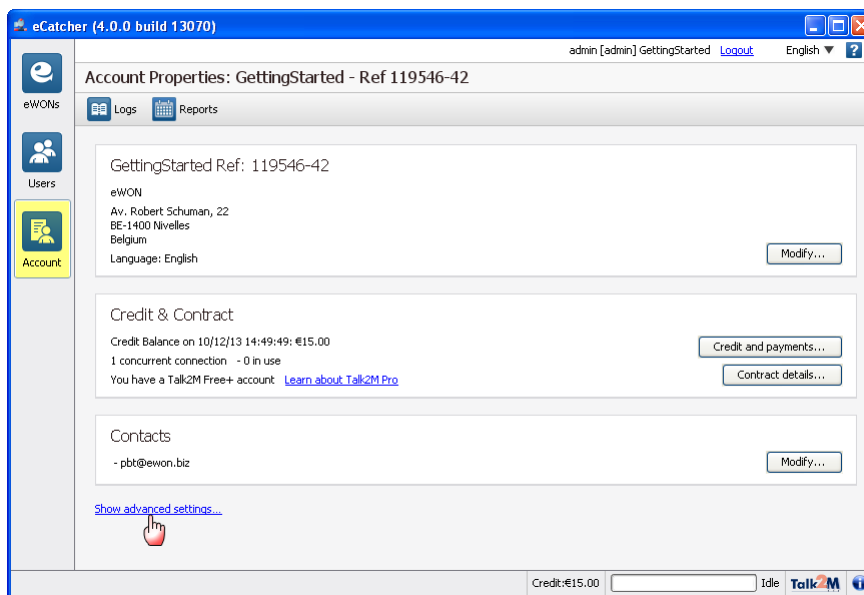
12. Specify the Custom Field Names

For each eWON and user created on the Talk2M account you can specify 3 custom fields which are displayed on the eWON list or User list.

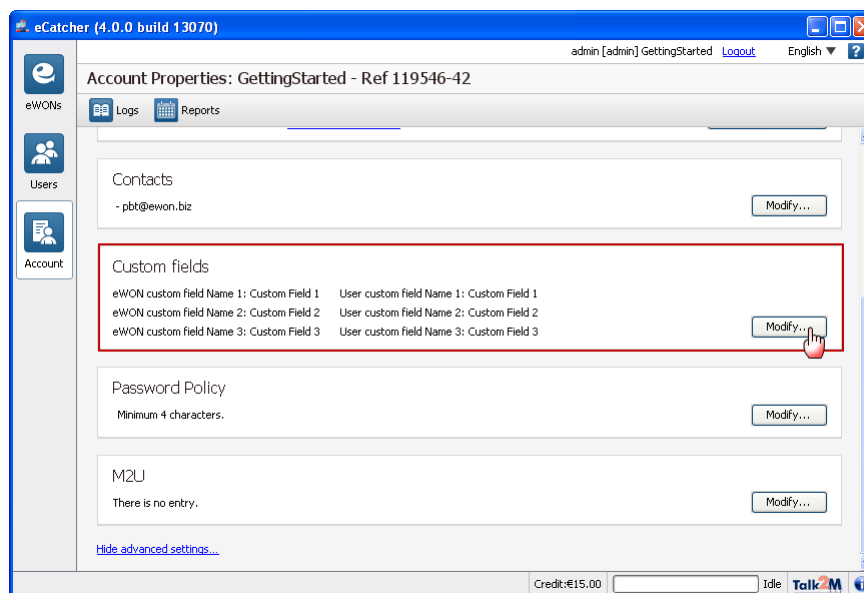
These fields can be used to easily find an eWON or a user in the list. Filter operations are also possible on these custom fields.

The name of the custom fields can be changed.

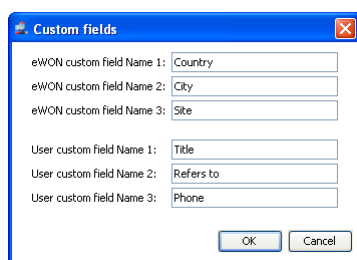
To achieve this, click on the **Account** menu on the left side of the eCatcher interface. The Account Properties window will show up:



Click on **Show advanced settings** and scroll down to Custom Fields.



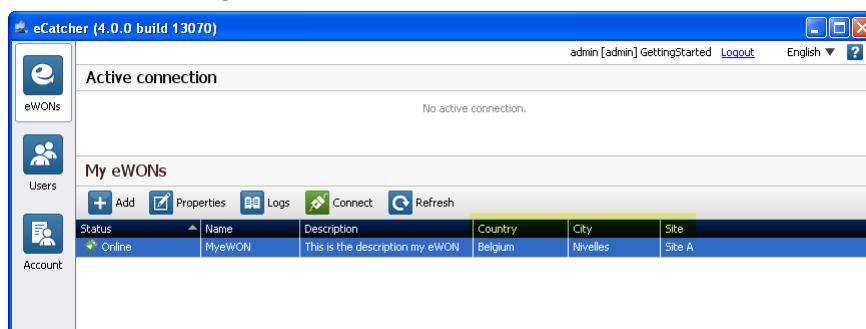
Click on **Modify...**



A dialog box titled "Custom fields" with a close button (X) in the top right corner. It contains six text input fields arranged in two groups. The first group is for eWON custom fields: "eWON custom field Name 1:" with "Country", "eWON custom field Name 2:" with "City", and "eWON custom field Name 3:" with "Site". The second group is for User custom fields: "User custom field Name 1:" with "Title", "User custom field Name 2:" with "Refers to", and "User custom field Name 3:" with "Phone". At the bottom are "OK" and "Cancel" buttons.

You are then able to modify the field names as shown.
To apply the modification, click on **OK**

When you now display the **eWON** or the **User** list page, you will see that the custom field names have been changed on the eWON list.

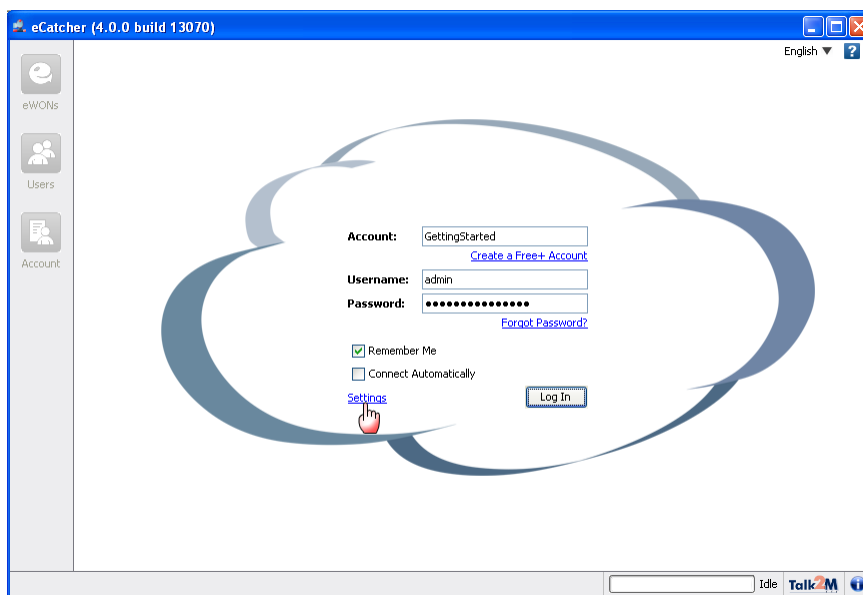


13. Troubleshooting

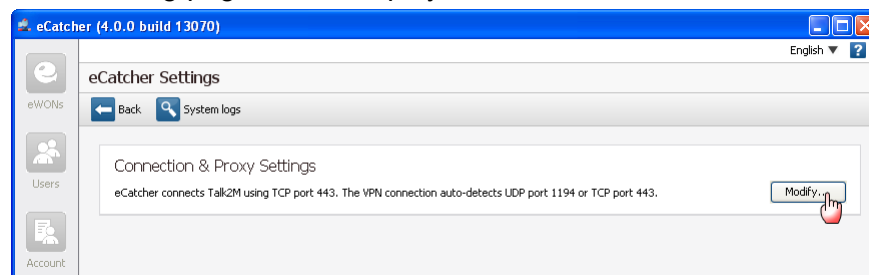
13.1. Connecting to Internet using a Proxy Server

If you connect to the Internet using a Proxy server you will need to enter the Proxy settings on the eCatcher software.

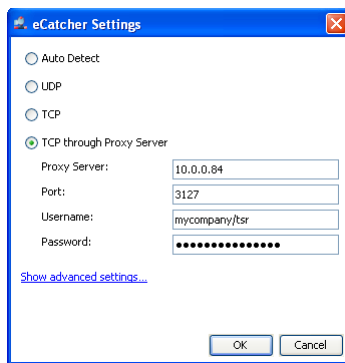
To achieve this, click on the **Settings** link which is displayed in the **Login** page. If you have configured your eCatcher to connect automatically, you'll have to click on the **Logout** link on the top right corner of the eCatcher window to reach the **Login** page.



The following page will be displayed:



Click on the **Modify...** button on the right of the zone to edit the connection type.



Select connection ***TCP through proxy server*** and encode your Proxy settings inside the Proxy server box. To save the settings, click on ***OK***.

Revisions

Revision Level	Date	Description
v1.0	02/03/11	First release.
v1.1	21/03/11	General document review and chapter "VPN server location" added.
v1.2	27/05/11	Plug'nRoute
v 2.0	28/01/14	Update to eCatcher 4

tag list	ewon, ecatcher, talk2m, vpn, tunnel, plc, remote connection, internet, firewall, wireless, gsm, gprs, edge, hsupa
----------	---

- i Microsoft, Internet Explorer, Windows and Windows XP are either registered trademarks or trademarks of Microsoft Corporation
- ii Firefox is a trademark of the Mozilla Foundation

Document build number: 111

Note concerning the warranty and the rights of ownership:

The information contained in this document is subject to modification without notice. The vendor and the authors of this manual are not liable for the errors it may contain, nor for their eventual consequences.

No liability or warranty, explicit or implicit, is made concerning quality, the accuracy and the correctness of the information contained in this document. In no case the manufacturer's responsibility could be called for direct, indirect, accidental or other damage occurring from any defect of the product or errors coming from this document.

The product names are mentioned in this manual for information purposes only. The trade marks and the product names or marks contained in this document are the property of their respective owners.

This document contains materials protected by the International Copyright Laws. All reproduction rights are reserved. No part of this handbook can be reproduced, transmitted or copied in any way without written consent from the manufacturer and/or the authors of this handbook