

# M2Web Logo Program

## APPLICATION NOTE

AUG-0060-00 1.3 en-US ENGLISH

Smart Industrial Machine

**SIM**

Username

Password

Connect

[Forgot password](#)

---

# Important User Information

## Disclaimer

The information in this document is for informational purposes only. Please inform HMS Industrial Networks of any inaccuracies or omissions found in this document. HMS Industrial Networks disclaims any responsibility or liability for any errors that may appear in this document.

HMS Industrial Networks reserves the right to modify its products in line with its policy of continuous product development. The information in this document shall therefore not be construed as a commitment on the part of HMS Industrial Networks and is subject to change without notice. HMS Industrial Networks makes no commitment to update or keep current the information in this document.

The data, examples and illustrations found in this document are included for illustrative purposes and are only intended to help improve understanding of the functionality and handling of the product. In view of the wide range of possible applications of the product, and because of the many variables and requirements associated with any particular implementation, HMS Industrial Networks cannot assume responsibility or liability for actual use based on the data, examples or illustrations included in this document nor for any damages incurred during installation of the product. Those responsible for the use of the product must acquire sufficient knowledge in order to ensure that the product is used correctly in their specific application and that the application meets all performance and safety requirements including any applicable laws, regulations, codes and standards. Further, HMS Industrial Networks will under no circumstances assume liability or responsibility for any problems that may arise as a result from the use of undocumented features or functional side effects found outside the documented scope of the product. The effects caused by any direct or indirect use of such aspects of the product are undefined and may include e.g. compatibility issues and stability issues.

---

# Table of Contents

Page

<b>1</b>	<b>Preface .....</b>	<b>3</b>
1.1	About This Document .....	3
1.2	Document history .....	3
1.3	Related Documents .....	3
1.4	Trademark Information .....	3
<b>2</b>	<b>Introduction.....</b>	<b>4</b>
2.1	Requirements.....	4
2.2	Scope.....	4
<b>3</b>	<b>Skin File.....</b>	<b>5</b>
3.1	Skin.ini .....	5
3.2	Pictures .....	7
<b>4</b>	<b>Manage a Skin .....</b>	<b>8</b>
4.1	Upload a Skin .....	8
4.2	Publish a Skin .....	9
4.3	Roll Back to Preview .....	10
4.4	Iframe Mode .....	11

**This page intentionally left blank**

# 1 Preface

## 1.1 About This Document

This document explains how to customize the skin of the M2Web portal with your own colours, images and style as well as how to access the M2Web portal through a login / access form implemented directly in your custom web pages.

For additional related documentation and file downloads, please visit [www.ewon.biz/support](http://www.ewon.biz/support).

## 1.2 Document history

Version	Date	Description
1.0	2015-12-15	First release
1.1	2016-11-30	Changed: Font section
1.2	2019-10-30	Changed: <a href="#">Manage a Skin, p. 8</a> Changed: <a href="#">Font Options, p. 6</a>
1.3	2020-01-31	Changed: Cover picture

## 1.3 Related Documents

Document	Author	Document ID

## 1.4 Trademark Information

eWON® is a registered trademark of HMS Industrial Networks SA. All other trademarks mentioned in this document are the property of their respective holders.

## 2 Introduction

M2Web is a standard service of Talk2M under the form of a web platform which provides secure browser-based mobile access to your remote HMI, web server, PC and panels.

The M2Web Logo Program is a feature which allows users to customize graphically the M2Web portal when they access their Talk2M account..

### 2.1 Requirements

To manage the custom M2Web platform, the following item is required:

- [eCatcher](#): the Talk2M software responsible for the management of your Talk2M account. Version must be 6.0 or higher.
- A computer that can archive files as *.zip* files.

### 2.2 Scope

You can display the M2Web Logo Program in two different areas:

- on the M2Web platform;
- on your own website.

You can change the layout of the M2Web platform, which is hosted by Ewon, by uploading specific files to Talk2M. We list and explain those files in this document.

You can also display the M2Web Logo Program on your website thanks to an iframe.

The iframe is an HTML box that you need to implement on your website. This iframe displays a login form that once submitted redirects the user to his Talk2M account on the M2Web platform.

## 3 Skin File

The user can customize the web portal with the help of a configuration file called *skin file* which is uploaded to M2Web under the form of an archive file.

M2Web automatically displays the custom layout called skin as soon as the user provides his account name.

If a user sets a skin to his M2Web portal, the following rules applies:

- ▶ M2Web does not display the skin if the user browses to *http://m2web.talk2m.com*.
  - However, after the user logs in, M2Web displays the custom portal.
- ▶ M2Web displays the skin if the user browses to *http://m2web.talk2m.com/myaccount*.
  - In this configuration, the login form does not show the *account* field.

To display the custom layout, M2Web must receive an archive that holds the following files:

<b>skin.ini</b>	Text file regrouping various layout options. This file is required
<b>logo.png</b>	Picture displayed on the top right of the M2Web platform (within the banner). This file is optional.
<b>welcome.png</b>	Picture displayed on the left side of the M2Web login form. This file is optional.

When the user creates the archive to gather the files, the following limitations apply:

- the 3 files (skin.ini, logo.png and welcome.png) should be at the root of the archive file. There can be no folder or sub-folder,
- the archive can not be password protected,
- the archive file size must be less than 350KB.

### 3.1 Skin.ini

The *skin.ini* file is an INI file containing a list of key/values options responsible for the rendering of your custom style.

Those options are written with the following syntax:

- keys contain only alphabetical or underscore characters and must belong to the known options list,
- values must be enclosed in single quotes and vary in format. Specific formats are described for each option in the list,
- key and value are separated by the sign equal "=",
- comments may be added using a leading semicolon ";",
- end of line may be either UNIX or DOS formatted.

#### Text Options

Text options are string of up to 150 characters (e.g.: Logo Program Inc.).

<b>logo_alt</b>	The alternative text to the <i>logo.png</i> picture. M2Web displays this text if the <i>logo.png</i> picture is absent.
<b>welcome_alt</b>	The alternative text to the <i>welcome.png</i> picture. M2Web displays this text if the <i>welcome.png</i> picture is absent.

### Color Options

Color options are either an hexadecimal color code preceded with a sharp sign “#” or a CSS color keyword<sup>1</sup>.

<b>banner_color</b>	The background color displayed in the top banner.
<b>iframe_font_color</b>	The font color used for the login form in the iframe mode.
<b>iframe_background_color</b>	The background color used for the login form in the iframe mode.

### URL Options

URL options must be a valid URL (e.g: <https://www.google.com>).

<b>terms_of_use</b>	The URL behind the link that redirects to a custom terms-of-use page. The link is located in the bottom right corner.
<b>logo_link</b>	The URL pointing to a website (user's company for instance), the link is set on the logo picture.

### Font Options

Font options defines fonts only in the iframe with the following syntax:

<b>iframe_font</b>	The font size and type used in the iframe.
--------------------	--

The font of the iframe is set as follows:

```
iframe_font: <font-size> [<font-list>]
```

where:

- **<font-size>**: <size><unit>|<absolute-size>|<relative-size>
  - **<size>**: numerical value
  - **<unit>**: one of '%', 'pt', 'px', 'em'
  - **<absolute-size>**: one of 'xx-small', 'x-small', 'small', 'medium', 'large', 'x-large', 'xx-large'
  - **<relative-size>**: one of 'smaller', 'larger'
- **<font-list>**: <font-name>[, <font-name>[, ...]]
  - **<font-name>**: string with alphanumerical characters, space and hyphens

#### Example 1: skin.ini

```
; Color of the banner (either hexadecimal color code or CSS color name)
; banner_color = '#dae74e'
; banner_color = 'salmon'
```

1. See [https://developer.mozilla.org/en-US/docs/Web/CSS/color\\_value#Color\\_keywords](https://developer.mozilla.org/en-US/docs/Web/CSS/color_value#Color_keywords) for keywords reference.



```
; Alternative text for logo picture on the top right
logo_alt = 'Ewon Logo'
; URL link behind the logo
logo_link = 'https://www.ewon.biz'

; Alternative text for welcome picture beside the form
welcome_alt = 'Ewon Web Platform'

; Font for the iframe mode
iframe_font = '14px Arial'
; Color of the font when in iframe mode
iframe_font_color = '#000000'
; Background color of the login form when in iframe mode
iframe_background_color = '#dae74e'

; URL to a custom Terms of Use web page
terms_of_use = 'https://ewon.biz/talk2m-terms-use'
```

## 3.2 Pictures

### **logo.png**

The *logo.png* picture is the logo displayed on the top right of the screen within the banner.

The following limitations apply to the *logo.png*:

- its size must be under 100KB,
- its width is up to 400px,
- its height is up to 100px,
- its format is PNG only.

### **welcome.png**

The *welcome.png* picture is displayed on the left of the login form. It does not appear in iframe mode.

The following limitations apply to the *welcome.png*:

- its size must be under 250KB,
- its width is up to 250px,
- its height is up to 500px,
- its format is PNG only.

## 4 Manage a Skin

Once you archived the skin files, you must upload the archive to Talk2M.

As of version 6.0, eCatcher integrates a simple interface to manage skins. The skin interface is accessible only to the administrators of the account.

As an administrator, you can access the skin interface by going to: **Account ► Show Advanced Settings ► M2Web Logo Program: Manage**.

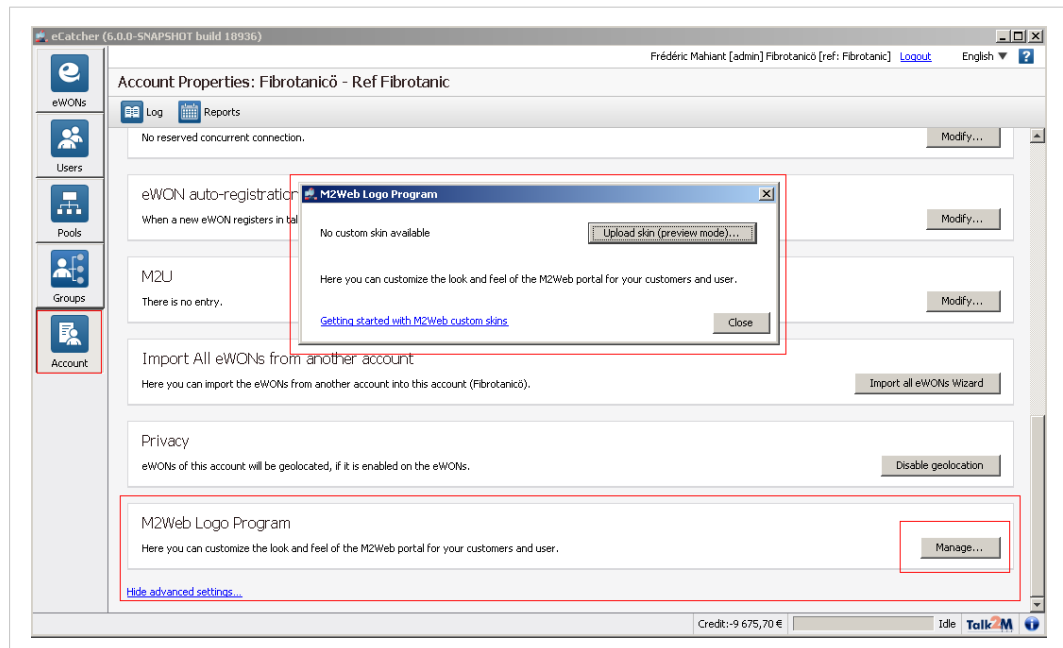


Fig. 1 Path to the M2Web Logo Program in eCatcher

### 4.1 Upload a Skin

To upload a new skin, follow the procedure:

1. Click the **Upload skin (preview mode)...** button.
2. Select the desired skin archive.
3. Click the **open** button.

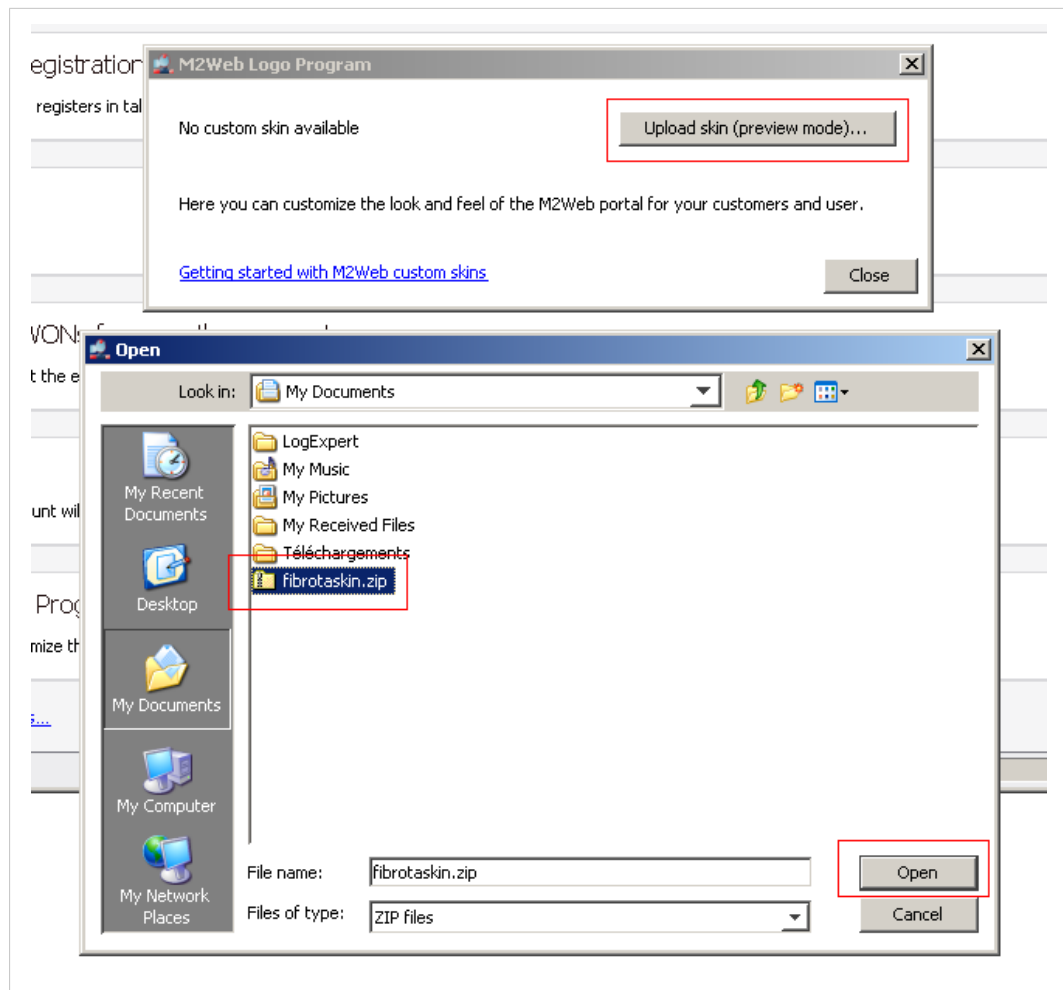


Fig. 2 Upload a Skin Archive

## 4.2 Publish a Skin

Once you uploaded the skin, eCatcher sets the skin in a preview mode.

At this stage, the skin is saved in Talk2M but not yet publicly published. To develop and amend a skin without releasing it publicly, a preview mode is available.

eCatcher proposes new options:

<b>Preview</b>	The link to the custom M2Web portal with preview enabled. This opens your default web browser.
<b>Download</b>	The possibility to retrieve and save the preview skin file from Talk2M on your computer.
<b>Delete</b>	The possibility to remove the preview skin.
<b>Generate iframe</b>	eCatcher opens a dialog with the generated HTML code to integrate in your website (with preview mode enabled).
<b>Upload another skin</b>	The possibility to upload another skin archive.

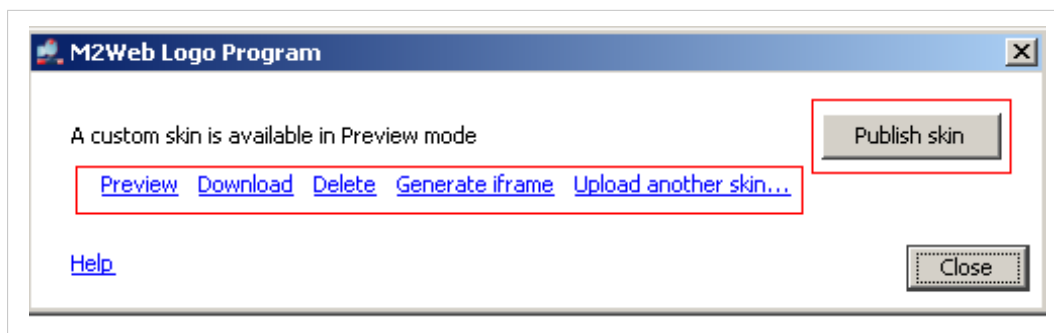


Fig. 3 Publish the Skin



To display a preview skin, append the `preview=1` parameter at the end of the M2Web URL such as `https://m2web.talk2m.com/myaccount?preview=1`.

If you click the **Publish skin** button, eCatcher puts the skin currently in preview into production.

### 4.3 Roll Back to Preview

Once you set the skin to publication (and no longer to preview), eCatcher proposes new options:

<b>Show me</b>	The link to the custom M2Web portal. This opens your default web browser.
<b>Download</b>	The possibility to retrieve and save the in-production skin file from Talk2M on your computer.
<b>Delete</b>	The possibility to remove the in-production skin.
<b>Generate iframe</b>	eCatcher opens a dialog with the generated HTML code to integrate in your website.
<b>Upload another skin</b>	The possibility to upload another skin archive.

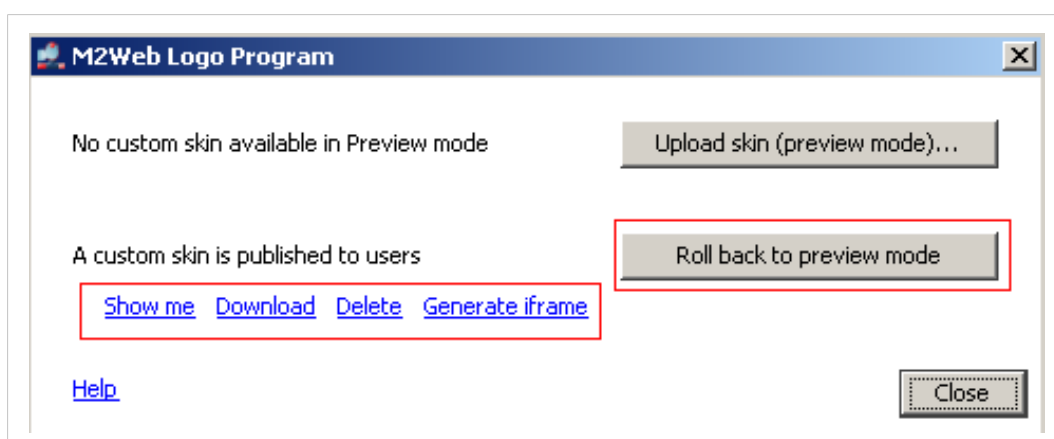


Fig. 4 Roll back to Preview

While a skin is in production, you can still upload a new skin. This new skin enters the preview mode but does not erase the skin currently in production. At this stage, you have a skin that is published and another skin in preview.

If you click the **Roll back to preview mode** button, eCatcher puts the skin currently in production into preview. There is no more a custom layout displayed on your M2Web platform.

## 4.4 Iframe Mode

To integrate the M2Web login form in an existing website, an *iframe mode* is available.

This mode allows the display of a minimal login page, generated by Talk2M, within a frame of your web page.

To use the iframe mode, append the *iframe=1* parameter to the M2Web URL such as *http://m2web.talk2m.com/myaccount?iframe=1*.

The iframe mode and preview mode are compatible.

### Example 2: Iframe generated HTML

```
<html>
<head>
<title>My own webpage</title>
</head>
<body>
<h1>Login to your management page</h1>
<iframe src="https://m2web.talk2m.com/myaccount/?iframe=1">
<p>Your browser does not support iframes, please go to
<a href="https://m2web.talk2m.com/myaccount/">M2web's login page</a></p>
</iframe>
</body>
</html>
```



*If you use an HTML5 doctype, we recommend adding the attribute **sandbox** in the **iframe** tag such as **<iframe src="https://m2web.talk2m.com/myaccount/?iframe=1" sandbox="allow-forms allow-top-navigation">**.*

You can have a look at our live example: <https://www.m2web-logo-program.com/>

