

Connect an Ewon gateway to Talk2M

APPLICATION NOTE

AUG-0089-00 1.0 en-US ENGLISH

Important User Information

Disclaimer

The information in this document is for informational purposes only. Please inform HMS Networks of any inaccuracies or omissions found in this document. HMS Networks disclaims any responsibility or liability for any errors that may appear in this document.

HMS Networks reserves the right to modify its products in line with its policy of continuous product development. The information in this document shall therefore not be construed as a commitment on the part of HMS Networks and is subject to change without notice. HMS Networks makes no commitment to update or keep current the information in this document.

The data, examples and illustrations found in this document are included for illustrative purposes and are only intended to help improve understanding of the functionality and handling of the product. In view of the wide range of possible applications of the product, and because of the many variables and requirements associated with any particular implementation, HMS Networks cannot assume responsibility or liability for actual use based on the data, examples or illustrations included in this document nor for any damages incurred during installation of the product. Those responsible for the use of the product must acquire sufficient knowledge in order to ensure that the product is used correctly in their specific application and that the application meets all performance and safety requirements including any applicable laws, regulations, codes and standards. Further, HMS Networks will under no circumstances assume liability or responsibility for any problems that may arise as a result from the use of undocumented features or functional side effects found outside the documented scope of the product. The effects caused by any direct or indirect use of such aspects of the product are undefined and may include e.g. compatibility issues and stability issues.

Table of Contents

Page

1	Preface	3
1.1	About This Document	3
1.2	Document history	3
1.3	Related Documents	3
1.4	Trademark Information	3
2	Introduction.....	4
2.1	Prerequisites	4
3	Easy Setup.....	6
3.1	Key Features	6
3.2	Process	6
4	Web Interface.....	13
4.1	Key Features	13
4.2	Process	13
5	Global Registration Key	24
5.1	Key Features	24
5.2	Process	24

This page intentionally left blank

1 Preface

1.1 About This Document

This document explains how to link your Ewon gateway to Talk2M, through the use of easy commissioning or the Ewon gateway's web interface. By connecting your Ewon gateway to Talk2M, you are able to access remotely your Ewon gateway.

.

For additional related documentation and file downloads, please visit www.ewon.biz/support.

1.2 Document history

Version	Date	Description
1.0	2020-03-19	First release

1.3 Related Documents

Document	Author	Document ID
----------	--------	-------------

1.4 Trademark Information

Ewon® is a registered trademark of HMS Industrial Networks SA. All other trademarks mentioned in this document are the property of their respective holders.

2 Introduction

Ewon gateways and the Talk2M worldwide VPN infrastructure enable users to connect to their remote equipment for troubleshooting their machines without going on-site.

This document will show you how to prepare your Ewon VPN gateway for remote access through Talk2M.

There are several methods for preparing an Ewon gateway such as an Ewon Cosy or Ewon Flexy for remote access through Talk2M:

1. *Easy Setup*

Configuration parameters are saved on a USB drive (Ewon Cosy) or SD card (Ewon Cosy or Ewon Flexy) which can then be used to configure the Ewon gateway.

The user does not need to connect a computer directly to the Ewon gateway during the configuration process.

2. *Web Interface*

You can also configure the Ewon Cosy and Ewon Flexy through a series of wizards within the Ewon gateway web interface:

- ▶ The user connects a PC to the Ewon gateway's Ethernet LAN port.
- ▶ The user opens the Ewon gateway's web interface through a web browser
- ▶ The user configures the Ewon gateway using its *Quick Launch Wizard*

3. *Easy Commissioning*

A series of user-created configuration files combined with a **<Global Registration Key (GRK)>** to configure an Ewon gateway via a USB drive (Ewon Cosy) or SD card (Ewon Cosy or Ewon Flexy).

This method is primarily for users with previous experience with Ewon gateway configuration and Talk2M.

2.1 Prerequisites

Required Software

Before beginning one of the configuration methods, be sure to install eCatcher, the Talk2M VPN client and Talk2M account administration software.

You can also use eCatcher to create a new Talk2M account if you do not have one yet.

Network Address Requirements

To be able to reach the PLC remotely, the Ewon Lan IP address must be inside the same range as the PLC. Be sure to select an IP address that is both compatible with the equipment you want to access remotely and that is not already in use.

Since the Ewon gateway acts as a router, it has two network interfaces:

- a LAN side for the PLC connection.
- a WAN side for the Internet connection.

In many instances, the WAN interface is configured to use DHCP. This means that it automatically receives the required network settings such as **<IP address>**, **<Subnet Mask>** and **<Gateway Address>** to connect to the network.

However, the WAN interface can also be configured manually using predefined settings. Before configuring the Ewon device, contact your network administrator for your network's requirements.

For the Ewon gateway to work as a router, the WAN IP address must be within an IP range different than the LAN IP address. If this is not the case in your configuration, please refer to our support site for more information.

3 Easy Setup

3.1 Key Features

The key features of the *Easy Setup* are as follows:

- There is no need to connect a PC to the Ewon gateway.
- The user must know the configuration settings in advance.
- It requires a USB drive (Ewon Cosy) or SD card (Ewon Cosy or Ewon Flexy)

3.2 Process

3.2.1 Step 1: Create your Ewon gateway in Talk2M

The first step consists in listing your Ewon gateway inside your Talk2M account using the [eCatcher](#) software.



If you already created your Ewon gateway in your Talk2M account, through eCatcher, you can skip this step and go to the next step.

To create your Ewon gateway in Talk2M, apply the following procedure:

1. Connect your computer to the Internet.
2. Verify that you have an Internet connection.
For example: open your web browser and browse to your favorite web page.
3. Open eCatcher and log in to your Talk2M account.

If you don't have a Talk2M account, click on the **Create a Free+ account** link. You can watch the video tutorial "Create a Talk2M Account" available on the [Ewon elearning platform](#) as a step-by-step guide.

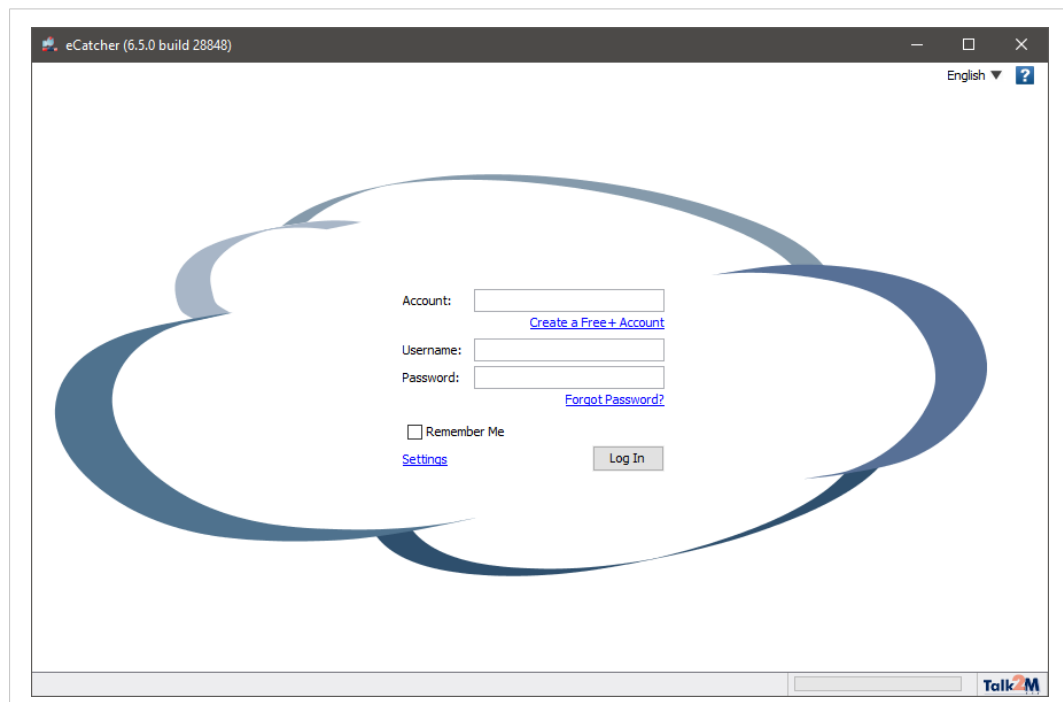


Fig. 1 Add an Ewon in eCatcher — 1

- On eCatcher's main interface, click the **+ Add** icon. A new window appears.

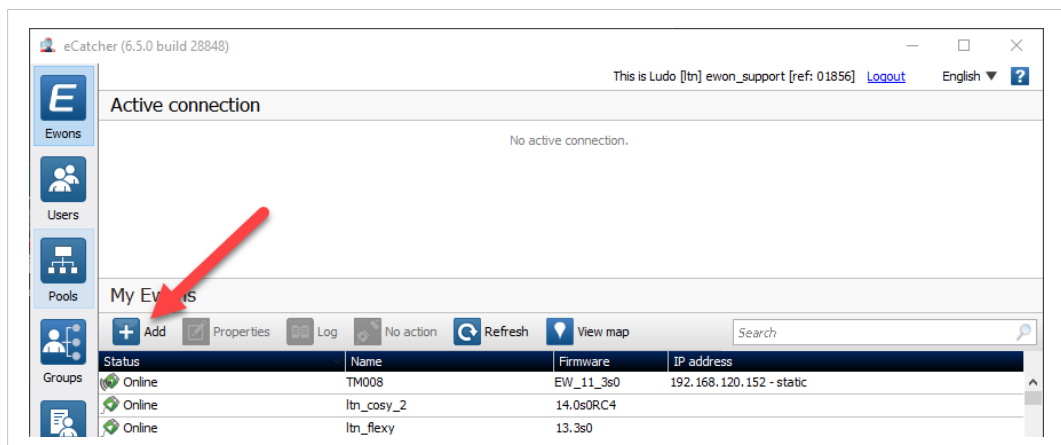


Fig. 2 Add an Ewon in eCatcher — 2

- Enter the name of your Ewon gateway.
The Talk2M server displays this name to identify the remote connection to your Ewon gateway
- Select the **Connection Type** to specify how your Ewon gateway connects to the Talk2M server. You can choose between two possibilities:

- Permanent: for Ethernet, Wi-Fi or cellular models. Your Ewon gateway stays permanently online.
- Triggered: only for cellular models. Your Ewon gateway is offline (but still functional) until you wake it up with an SMS.

If you specify a triggered connection, then eCatcher asks for the phone number of your Ewon gateway. The phone number allows Talk2M to send an SMS which wakes up your Ewon gateway.

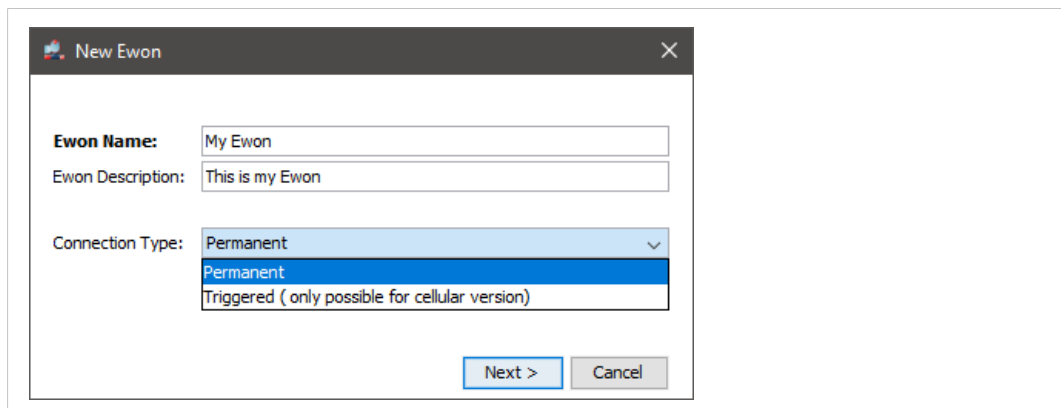


Fig. 3 Add an Ewon in eCatcher — 3

- Click **Next**.

8. Enter custom information concerning your remote connection. You can use the **Custom Fields** to classify or filter your different remote connections (your different Ewon gateways).

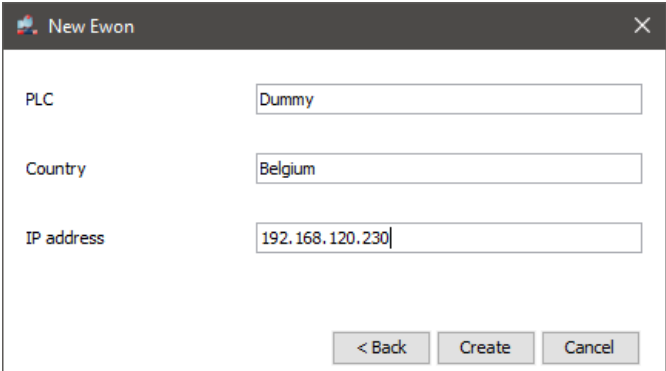


Fig. 4 Add an Ewon in eCatcher — 4

9. If you're logged in to a Talk2M PRO account, you will also need to associate your Ewon gateway to an Ewon Pool.
10. Click **Create**.

The newly created Ewon gateway is now linked to your Talk2M account.

eCatcher displays the "Talk2M Connectivity" frame. Follow the [Step 2: Prepare the Configuration File, p. 8](#) to continue the configuration of the remote access.

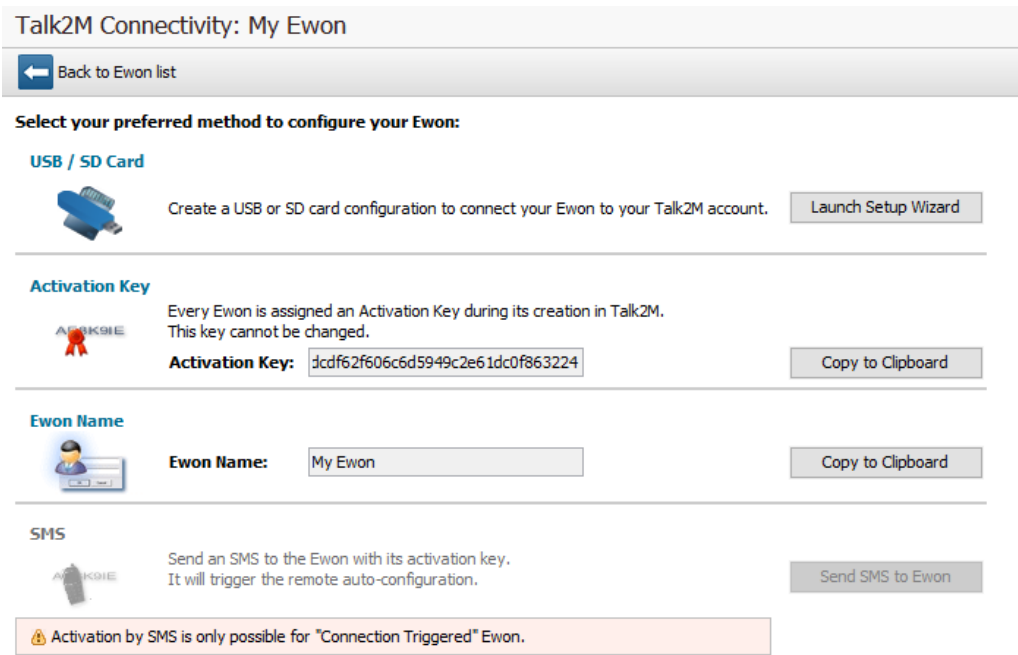


Fig. 5 Talk2m Connectivity in eCatcher

3.2.2 Step 2: Prepare the Configuration File

To access remotely your Ewon gateway, you need to configure the Internet and the Talk2M VPN connection of your Ewon gateway.

The configuration explained in this section uses the *Talk2M Easy Setup* feature embedded in the eCatcher (as of v6.4).

eCatcher offers the possibility to create a commissioning file which includes all the configuration parameters useful to configure such connections.

eCatcher stores the commissioning file on an SD card or a USB flash drive. You can then insert the SD card or USB flash drive in your Ewon gateway which automatically applies the configuration parameters available on the SD card / USB flash drive.



To apply the following configuration, your Ewon gateway must run (minimum) Ewon gateway firmware version 13.2s0 for the USB drive and 11.0s0 for the SD card.



If you decide to use a USB flash drive combined with a Ewon Flexy, you need the Flexy USB extension card: FLB 3601.

Once eCatcher displays the “Talk2M Connectivity” frame, apply the following procedure:

1. Insert an SD card or USB flash drive in your computer. Make sure the card or the key is of FAT32 format.
2. Click the **Launch Setup Wizard** button of the **USB / SD Card** first row.
3. Select the WAN interface of your Ewon gateway.
4. Depending on the interface you choose, different configuration fields are required:
 - Ethernet: WAN IP settings.
 - Wi-Fi: SSID settings.
 - Cellular: SIM card and APN settings.

For Ethernet and Wi-Fi, make sure to complete the advanced settings if necessary.

5. Click **Next**.
6. Set the LAN IP address of your Ewon gateway.
7. Click **Next**.
8. Select the location where eCatcher should export the file.
9. Click **Save** twice to confirm the export.

The last screen is an explanation how to proceed with the SD card / USB flash drive and your Ewon gateway. You can also follow [Step 3: Apply the Configuration File, p. 9](#).

3.2.3 Step 3: Apply the Configuration File



The following configuration works only if your Ewon gateway hasn't been registered on Talk2M (or is not currently linked to a Talk2M account).

To configure your Ewon gateway for remote access, apply the following procedure:

1. Make sure of the following things:
 - your Ewon gateway is powered on
 - your Ewon gateway is able to connect to the Internet, either:
 - the WAN cable is plugged in. The WAN port of the switch is represented by an orange LED.
 - the SIM card has been inserted in the Ewon Flexy cellular extension, and the cellular antenna is attached.
 - the Wi-Fi antenna is attached.

2. Insert the SD card or the USB flash drive in your Ewon gateway.

The Ewon gateway detects the insertion in a very short period (5 seconds maximum) and you can visualize this detection by the quick orange blinking pattern of the USR LED (ON / OFF each 150 msec).

3. Wait for the Ewon gateway to process the configuration files.

After the detection of your SD card or USB flash drive, comes the processing of the configuration files. You can visualize the processing of the files by the slow orange blinking pattern of the USR LED (ON / OFF each second).

4. Check the status of the USR LED.

After the configuration files are processed, your Ewon gateway shows if it was able to apply the configuration. The result is as follows:

- solid green: success
- solid red: failure

5. Remove the SD card or the USB flash drive. The removal induces the reboot of the Ewon gateway.
6. Within 2 minutes after the reboot, your Ewon gateway should be online in eCatcher.

3.2.4 Step 4: Connect to your Ewon gateway Remotely

Now that the Ewon gateway is connected to Talk2M, you can establish the remote connection to this Ewon gateway.

Depending on the type of connection you set, the procedure changes.

Permanent Connection

To connect remotely to an Ewon gateway tagged as permanent connection, follow the procedure:

1. Connect your computer to the Internet.
2. Verify that you have an Internet connection.
For example: open your web browser and browse to your favorite web page.
3. Open eCatcher (if not already opened).
4. Select the Ewon gateway you just configured in the “My Ewon gateways” list.
5. Click the green **Connect** button displayed in the Ewon gateway list menu to establish the remote connection. eCatcher is now attempting to establish a VPN connection to the Talk2M server.

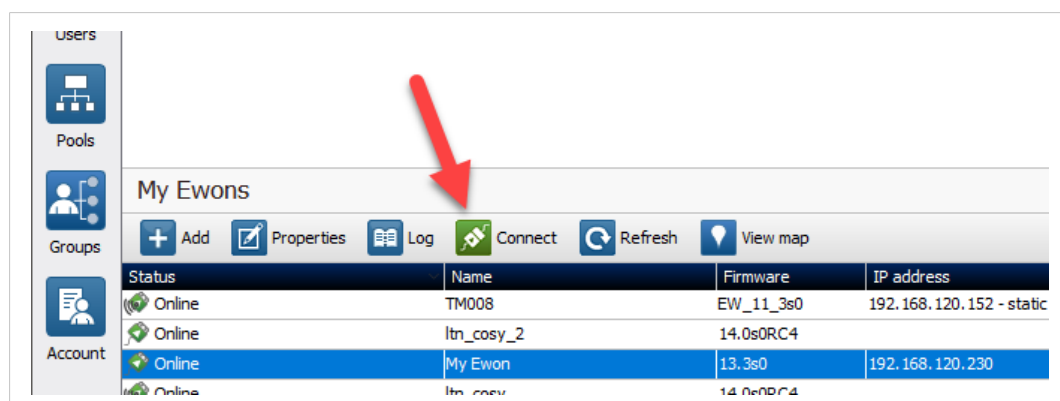


Fig. 6 Connection to an Talk2M

6. Once the VPN connection established, eCatcher displays the Ewon gateway in the “Active connection” section.

The computer is now connected to the Ewon gateway using the VPN tunnel and you can use the remote connection.

You can click the **IP address** link in the “Active Connection” section to display, in a web browser, the homepage of the Ewon gateway web interface.

Triggered Connection

To connect remotely to an Ewon gateway tagged as triggered connection, follow the procedure:

1. Connect your computer to the Internet.
2. Verify that you have an Internet connection.
For example: open your web browser and browse to your favorite web page.
3. Open eCatcher (if not already opened).
4. Select the Ewon gateway you just configured in the “My Ewon gateways” list.

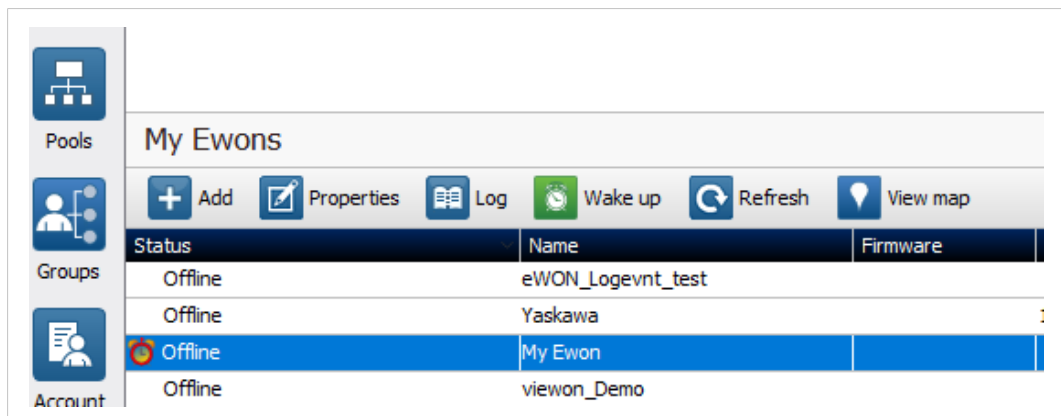


Fig. 7 Wake up your Ewon gateway — 1

5. Click the green **Wake up** button displayed in the Ewon gateway list menu to wake up your Ewon gateway.

By doing so, eCatcher sends an SMS to switch your Ewon gateway online.

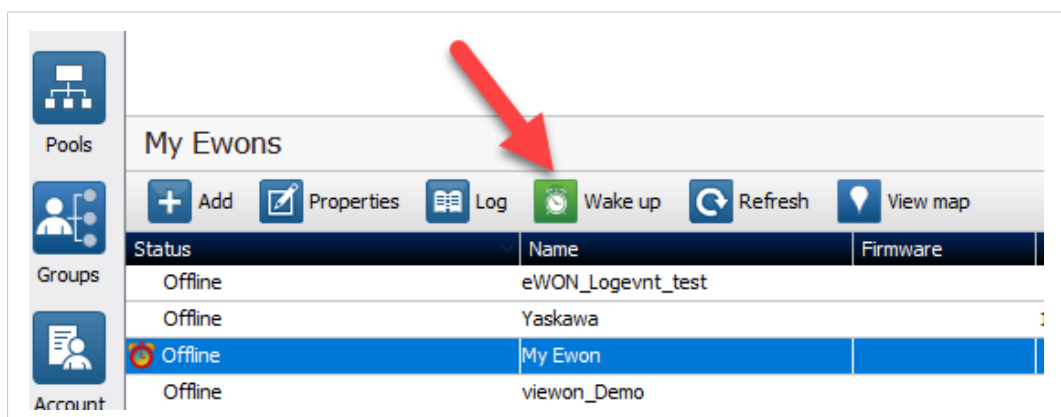


Fig. 8 Wake up your Ewon gateway — 2

- Click the green **Connect** button (previously **Wake up** button) once the Ewon gateway changes status to **<Online>**. The **<Connect>** button is displayed in the Ewon gateway list menu and establishes the remote connection. eCatcher is now attempting to establish a VPN connection to the Talk2M server.

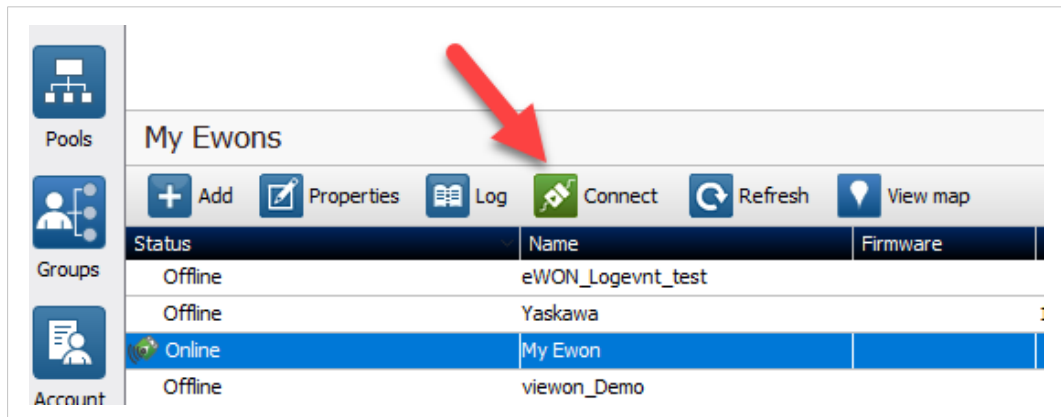


Fig. 9 Wake up your Ewon gateway — 3

- Once the VPN connection established, eCatcher displays the Ewon gateway in the “Active connection” section.



With your smartphone, you can also send the SMS “Talk2M_Connect” or “Talk2MConnect” to your Ewon gateway to wake it up.

The computer is now connected to the Ewon gateway using the VPN tunnel and you can use the remote connection.

You can click the **IP address** link in the “Active Connection” section to display, in a web browser, the homepage of the Ewon gateway web interface.

3.2.5 Step 5: Password & Date/Time

The last thing to do with the Ewon gateway is to change its password and set the right date & time.

Proceed as follow:

- Open your Internet browser on your computer.
 - Target the IP address — LAN or VPN — of your Ewon gateway
- Log in by filling the username and password fields, both with **adm**.
 - You will be logged in and 2 prompts will show up immediately
- Select the **<language>** if asked to.
- Change the **<password>** if required to.
- Hit the **Wizard** button in the upper right corner of the window.
- Click on the **System** button in the right-side menu.
 - Follow the wizard to set the right date & time.

4 Web Interface

4.1 Key Features

The key features of the *Web Interface* are as follows:

- It is a good method when the network settings are not known prior to the installation.
- It supports configuring a fallback WAN connection.
- No USB drive or SD card required.

For this method, you will need to download and install the eBuddy software available on the [Ewon website](#).

4.2 Process

4.2.1 Step 1: Create Your Ewon gateway in Talk2M

This step consists in listing your Ewon gateway inside your Talk2M account using the [eCatcher](#) software.



If you already created your Ewon gateway in your Talk2M account, through eCatcher, you can skip this step and go to the next step.

To create your Ewon gateway in Talk2M, apply the following procedure:

1. Connect your computer to the company LAN.
2. Set the network parameters of your computer to **DHCP enabled**. An IP address is automatically provided from the DHCP server of the company network.
3. Verify that you have an Internet connection. For example: open your web browser and browse to your favorite web page.
4. Open eCatcher if your Internet connection works.
5. On eCatcher's main interface, click the **+ Add** icon. A new window appears.
6. Enter the name of your Ewon gateway. The Talk2M server displays this name to identify the remote connection to your Ewon gateway
7. Select the **Connection Type** to specify how your Ewon gateway connects to the Talk2M server. You can choose between two possibilities:
 - Permanent: for Ethernet, Wi-Fi or cellular models. Your Ewon gateway stays permanently online.
 - Triggered: only for cellular models. Your Ewon gateway is offline (but still functional) until you wake it up with an SMS.

If you specify a triggered connection, then eCatcher asks for the phone number of your Ewon gateway. The phone number allows Talk2M to send a n SMS which wakes up your Ewon gateway.
8. Click **Next**.
9. Enter custom information concerning your remote connection. You can use the **Custom Fields** to classify or filter your different remote connections (your different Ewon gateways).
10. If you're logged in to a Talk2M PRO account, you will also need to associate your Ewon gateway to an Ewon Pool.
11. Click **Create**.

The newly created Ewon gateway is now linked to your Talk2M account.

eCatcher displays the “Talk2M Connectivity” frame. Follow the [Step 4: Retrieve the Talk2M Activation Key, p. 20](#) to continue the configuration of the remote access.

4.2.2 Step 2: Set the LAN IP Address of your Ewon gateway

As you have selected your IP addresses, you can start configuring your Ewon gateway.

In our example, the Ewon gateway is set to LAN IP address 192.168.0.53. This address fits into the PLC range and does not interfere with the *Company LAN*.

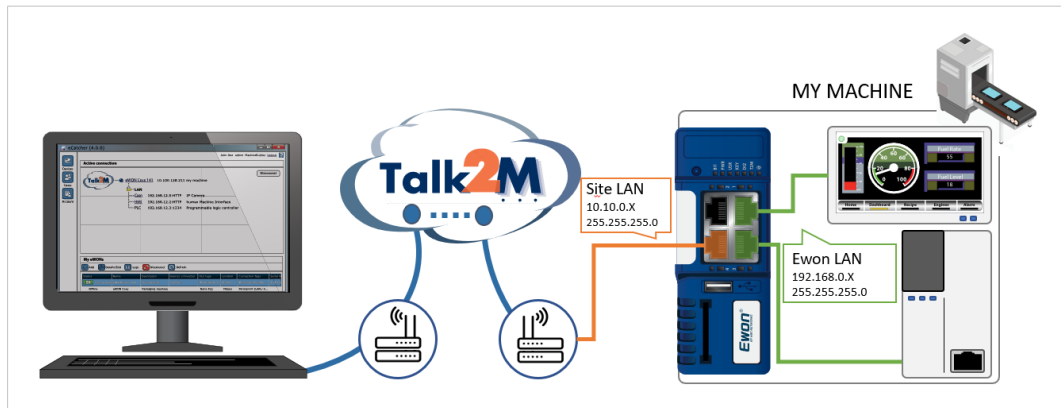


Fig. 10 Example of IP addresses involved

In this step, there is no constraint on the IP range of your computer.

To configure the LAN IP address of your Ewon gateway:

1. Link your computer to the LAN port of your Ewon gateway.

Usually, this link is made through the company network but It can also be made with a point-to-point link.



Fig. 11 Connect the computer indirectly to the Ewon gateway though Company LAN

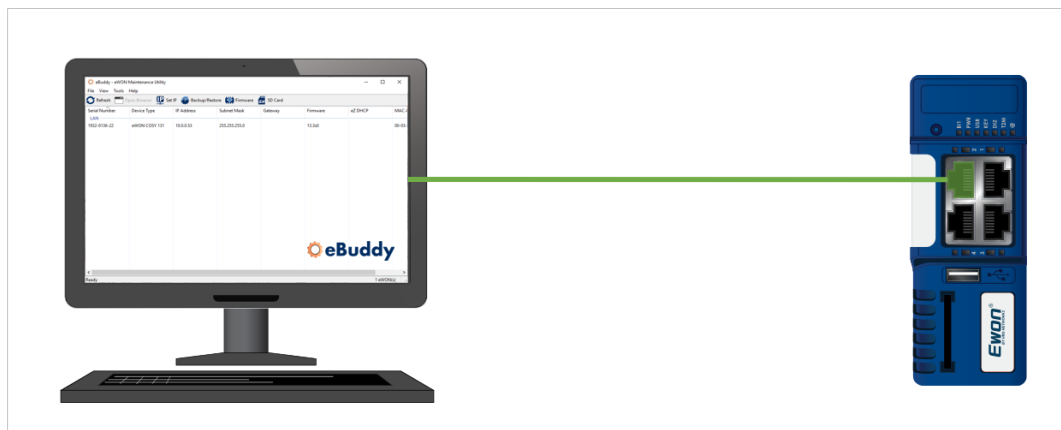


Fig. 12 Connect the computer directly to the Ewon gateway

2. Open eBuddy.

eBuddy can display your Ewon gateway in its list even if your computer has a different network address range than your Ewon gateway.

3. Highlight (click on) your Ewon gateway in the eBuddy list.

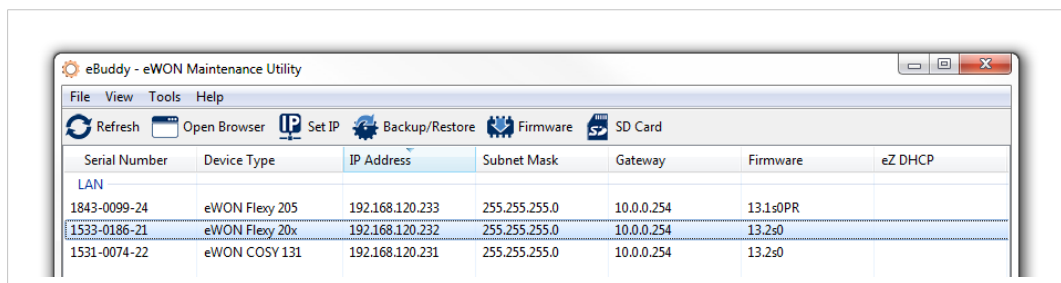


Fig. 13 eBuddy — Selection of the Ewon gateway

- Click the **Set IP** button.

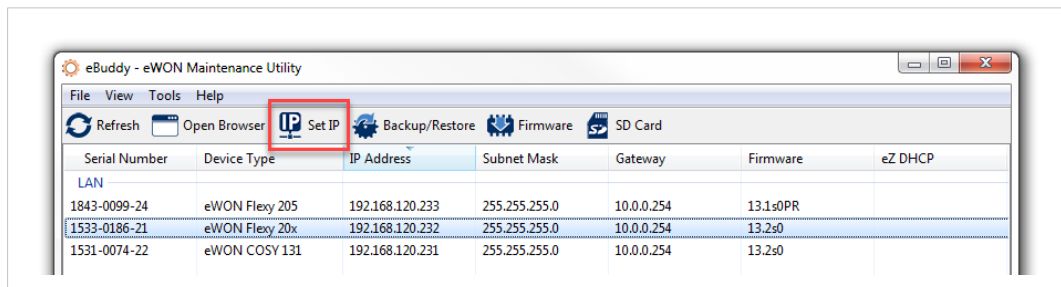


Fig. 14 eBuddy — Set IP button

- Set the **Serial Number** of your Ewon gateway if the field is empty.

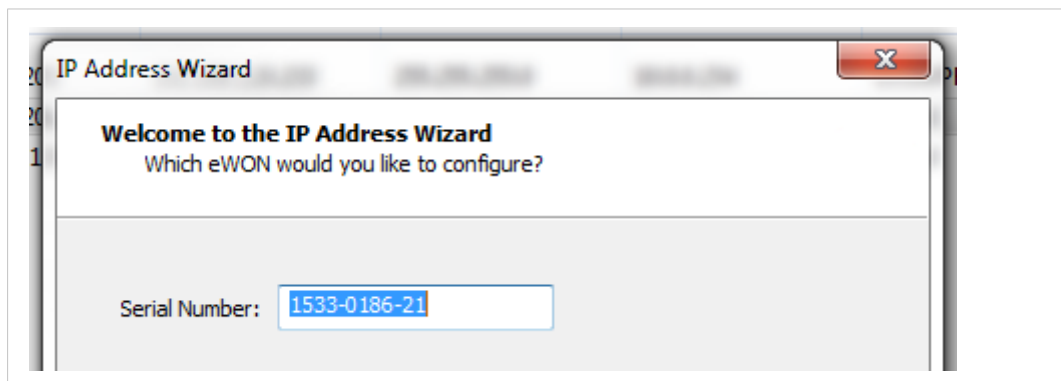


Fig. 15 eBuddy — Serial number field

If you don't know your Ewon gateway's serial number, you can look it up on the right side of the Ewon gateway itself.

- Click **Next**.
- Set the new LAN IP address and Subnet Mask of your Ewon gateway.

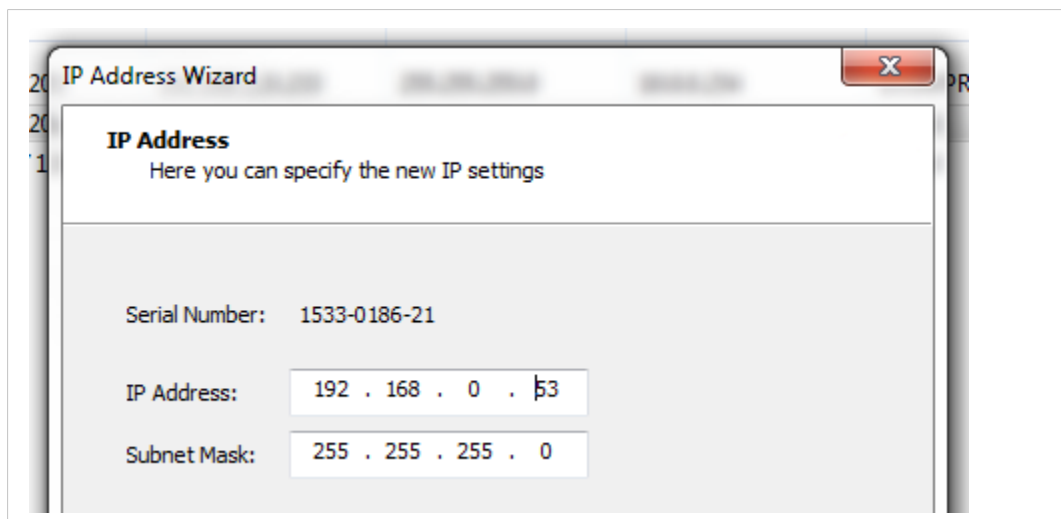


Fig. 16 eBuddy — LAN IP address and Subnet mask

- Click **Next**.

9. Wait until the Ewon gateway reboots.

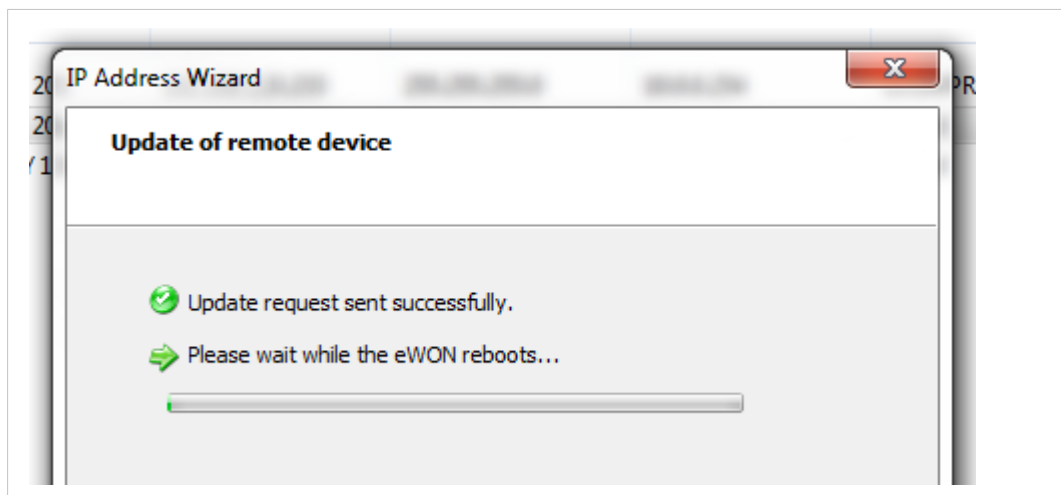


Fig. 17 eBuddy — Reboot of the Ewon gateway

10. Click **Finish**.

4.2.3 Step 3: Configure the Ewon gateway Internet Connection

To configure the Internet connection of your Ewon gateway, follow these steps:

1. Link your computer to the LAN port of your Ewon gateway.
Usually, this link is made through the company network but It can also be made with a point-to-point link.
2. Open **eBuddy** (if not already open).
3. Highlight the **Ewon gateway** you want to connect to.
4. Right-click on this Ewon gateway.
5. Select **Open in browser**.
6. Log in to your Ewon gateway.
7. Click the **Wizard** button in the top right corner.
8. [Recommended] Go through the System wizard before setting the Internet connection.
The system wizard lets you change the password of the administrator but also sets the date & time of the Ewon gateway.
Click the **System** button in the right-side menu and follow the different steps.
9. Click the **Internet** button in the right-side menu.
10. Select the WAN interface of your Ewon gateway. The propositions displayed are based on the model of your Ewon gateway



WAN refers to Wide Area Network which is the network covering a broad external area using the Internet infrastructure. It is opposed to LAN referring to Local Area Network which is restricted to internal networks.

To continue the Internet step-by-step guide, select your interfaces:

- [Ethernet Connection, p. 18](#);
- [Wi-Fi Connection, p. 18](#);
- [Cellular Connection, p. 19](#).

Ethernet Connection

1. Make sure the WAN port of the Ewon gateway is physically connected to the company network.

The LED dedicated to WAN traffic activity doesn't blink yet as the WAN connection is not yet defined.

2. Click **Next**.
3. Select the network management protocol:
 - static;
 - BootP;
 - DHCP.

We recommend using **DHCP**. This way, your Ewon gateway receives an IP address and Internet access automatically from host.

4. Click **Next**.
5. **Enable** the Internet connection test.
6. Click **Next**.

The last step of the Internet configuration consist in a communication test.

The *Online IP Check* performed during the connectivity test aims at validating the WAN IP address by reaching a specific domain on Internet on a specific port.

If your network parameters are correct, this test should end up successfully.

If the Internet connection test is not successful, then go back through the previous configuration steps and recheck all settings for compatibility and accuracy.



*Your network firewall should allow connections to *.talk2m.com on port 80. Otherwise, the Online IP Check fails.*

More information about the configuration of your Ewon gateway for Internet access using the wizard can be found in the [Related Documents, p. 3](#).

Wi-Fi Connection

1. Click **Next**.
2. Enter the name of the Wi-Fi network (SSID) and its password.
3. Select the network management protocol:
 - static;
 - BootP;
 - DHCP.

We recommend using **DHCP**. This way, your Ewon gateway receives an IP address and Internet access automatically from host.

4. Click **Next**.
5. **Enable** the Internet connection test.
6. Make sure the antenna is attached.
7. Click **Next**.

The last step of the Internet configuration consist in a communication test.

The *Online IP Check* performed during the connectivity test aims at validating the WAN IP address by reaching a specific domain on Internet on a specific port.

If your network parameters are correct, this test should end up successfully.

If the Internet connection test is not successful, then go back through the previous configuration steps and recheck all settings for compatibility and accuracy.



*Your network firewall should allow connections to *.talk2m.com on port 80. Otherwise, the Online IP Check fails.*

More information about the configuration of your Ewon gateway for Internet access using the wizard can be found in the [Related Documents, p. 3](#).

Cellular Connection

1. Click **Next**.
2. Enter the information related to the SIM card and the APN.
3. Click **Next**.
4. Select the connection type:
 - Maintain connection: your Ewon gateway is permanently connected.
 - Triggered: you must wake up your Ewon gateway by sending an SMS so it initializes the connection.
5. Click **Next**.
6. Set the call budget if the connection type is set **triggered**:
 - Idle time: the amount of time before the Ewon gateway shuts down the connection if there is no traffic from/to the Ewon gateway.
 - Call duration: the amount of time the Ewon gateway stays online before closing the outgoing connection.
7. Make sure the SIM card is inserted and the antenna attached.
8. Click **Next**.

The *Online IP Check* performed during the connectivity test aims at validating the WAN IP address by reaching a specific domain on Internet on a specific port.

If your network parameters are correct, this test should end up successfully.

If the Internet connection test is not successful, then go back through the previous configuration steps and recheck all settings for compatibility and accuracy.



*Your network firewall should allow connections to *.talk2m.com on port 80. Otherwise, the Online IP Check fails.*

More information about the configuration of your Ewon gateway for Internet access using the wizard can be found in the [Related Documents, p. 3](#).

WAN Fallback

If another WAN interface is available, a popup appears at the end of the Internet wizard and offers to configure this secondary WAN interface.

If configured, the Ewon gateway switches automatically to this secondary WAN interface in case the primary interface fails.

The configuration of the secondary WAN interface is a replay of the Internet wizard where the proposed settings are based on this second WAN interface type.

4.2.4 Step 4: Retrieve the Talk2M Activation Key

Up to now, we only added the Ewon gateway in your Talk2M account but we didn't configure the Ewon gateway to connect to the Talk2M server.

One way to enable the link between your Ewon gateway and the Talk2M server is with the activation key. The activation key allows the Ewon gateway to retrieve the VPN keys and certificates useful to establish the VPN connection.

Continue the [Step 3: Configure the Ewon gateway Internet Connection, p. 17](#) and, in the "Talk2M Connectivity" frame, get the activation key by proceeding as follows:

1. Click the **Copy to Clipboard** button from the **Activation Key** row.

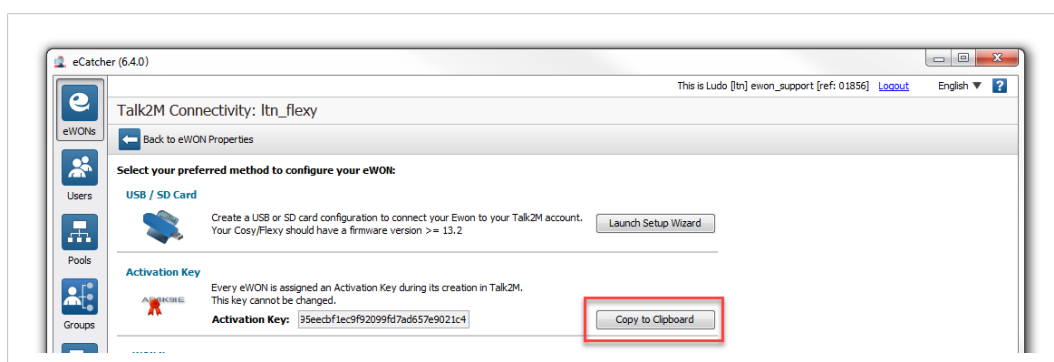


Fig. 18 eCatcher — Activation key

If you are not in the "Talk2M Connectivity" frame but in eCatcher's main window instead, follow this process to retrieve the activation key:

1. Select your Ewon gateway in the "My Ewon gateways" list.
2. Click the **Properties** button.

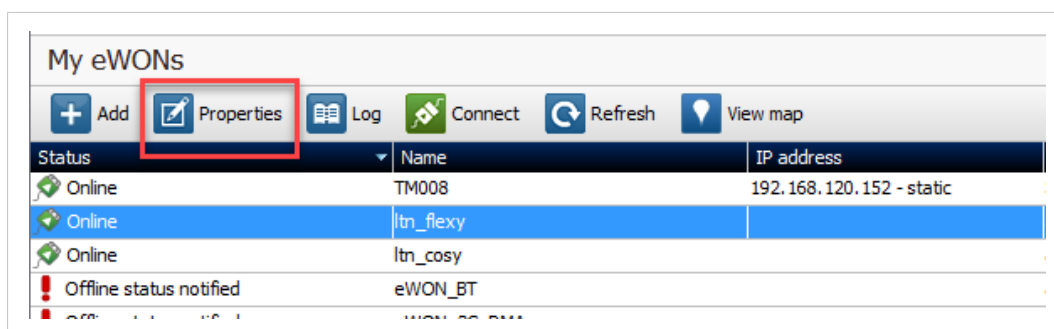


Fig. 19 eCatcher — Properties of an Ewon gateway

- Click the **Talk2M Connectivity** button.

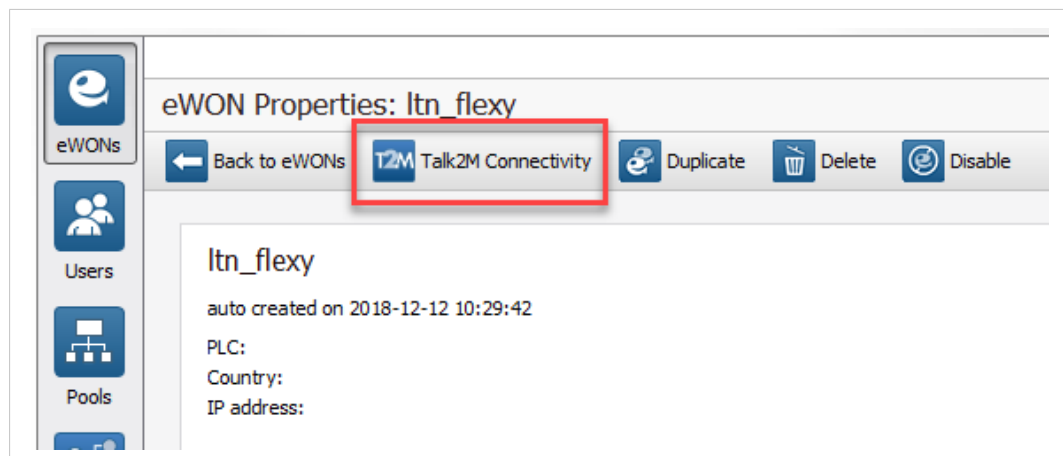


Fig. 20 eCatcher — Talk2M Connectivity

- Click the **Copy to Clipboard** button from the **Activation Key** row.

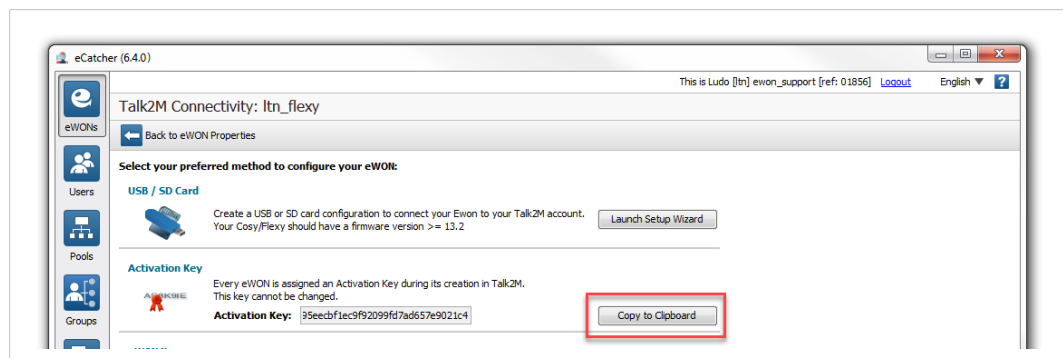


Fig. 21 eCatcher — Activation key

4.2.5 Step 5: Connect Your Ewon gateway to Talk2M

To configure the Ewon gateway Talk2M connection, follow the steps below:

- Make sure of the following things:
 - your Ewon gateway is powered on
 - your Ewon gateway is able to connect to the Internet, either:
 - the WAN cable is plugged in. The WAN port of the switch is represented by an orange LED.
 - the SIM card has been inserted in the Ewon Flexy cellular extension, and the cellular antenna is screwed..
 - the Wi-Fi antenna is screwed.
- Connect your computer to a LAN port of your Ewon gateway.
- Open your web browser and target the Ewon gateway internal web page by browsing the LAN address you configured in [Step 2: Set the LAN IP Address of your Ewon gateway, p. 14](#).
In our example, that would be: `http://192.168.0.53`.
- Click the **Wizard** button in the top right corner.
- Click the **Talk2M – VPN** button.
- Click the **T2M** button.

7. Insert the activation key copied from [Step 4: Retrieve the Talk2M Activation Key, p. 20](#).
8. Click **Next**.
9. Set the advanced configuration if needed. The advanced settings concern:
 - the use of a proxy for the WAN connection,
 - the obligation to use TCP packets instead of UDP for the WAN connection.
10. Click **Next**.

The last step of this wizard is the Talk2M registration and so the establishment of the VPN tunnel between your Ewon gateway and Talk2M. The following tests are performed:

- the Ewon gateway tests the different connections needed to reach the Talk2M server (UDP/TCP, HTTP with/without proxy),
- the Ewon gateway connects to the Talk2M server and retrieves the VPN keys,
- once the keys retrieves, the VPN tunnel is established.

The result is displayed on the wizard page. Click **Finish** to end the wizard.

Your Ewon gateway now appears online in eCatcher.

4.2.6 Step 6: Connect to Your Ewon gateway Remotely

Now that the Ewon gateway is configured to connect to Talk2M, you can establish the remote connection to this Ewon gateway.

Depending on the type of connection you set, the procedure changes.

Permanent Connection

To connect remotely to an Ewon gateway tagged as permanent connection, follow the procedure:

1. Connect your computer to the company LAN.
2. Set the network parameters of your computer to “DHCP enabled”. An IP address is automatically provided from the DHCP server of the company network.
3. Verify that you have an Internet connection. For example: open your web browser and browse to your favorite web page.
4. Open eCatcher (if not already opened).
5. Select the Ewon gateway you just configured in the “My Ewon gateways” list.
6. Click the green **Connect** button displayed in the Ewon gateway list menu to establish the remote connection. eCatcher is now attempting to establish a VPN connection to the Talk2M server.
7. Once the VPN connection established, eCatcher displays the Ewon gateway in the “Active connection” section.

The computer is now connected to the Ewon gateway using the VPN tunnel and you can use the remote connection.

You can click the **IP address** link in the “Active Connection” section to display, in a web browser, the homepage of the Ewon gateway web interface.

Triggered Connection

To connect remotely to an Talk2M tagged as triggered connection, follow the procedure:

1. Connect your computer to the company LAN.

2. Set the network parameters of your computer to “DHCP enabled”. An IP address is automatically provided from the DHCP server of the company network.
3. Verify that you have an Internet connection. For example: open your web browser and browse to your favorite web page.
4. Open eCatcher (if not already opened).
5. Select the Ewon gateway you just configured in the “My Ewon gateways” list.
6. Click the green **Wake up** button displayed in the Ewon gateway list menu to wake up your Ewon gateway.

By doing so, eCatcher sends an SMS to switch your Ewon gateway online.

7. Click the green **Connect** button (previously **Wake up** button) displayed in the Ewon gateway list menu to establish the remote connection. eCatcher is now attempting to establish a VPN connection to the Talk2M server.
8. Once the VPN connection established, eCatcher displays the Ewon gateway in the “Active connection” section.

The computer is now connected to the Ewon gateway using the VPN tunnel and you can use the remote connection.

You can click the **IP address** link in the “Active Connection” section to display, in a web browser, the homepage of the Ewon gateway web interface.

4.2.7 Step 7: Terminate the Remote Connection



Before terminating the Talk2M VPN connection to the Ewon gateway, it is mandatory to change the administrator password which is set by default to *adm*.

To end the VPN connection and so the remote access to your Ewon gateway, apply the following procedure:

1. Open eCatcher while you are remotely connected to your Ewon gateway.
2. Click the red **Disconnect** button to terminate the remote access.
3. Optionally, leave a log message for future use.

You are now disconnected from your Ewon gateway and can no longer use the remote access.



*By disconnecting, you terminate only the VPN tunnel. If you also want to send your Ewon gateway offline (in case of a triggered Ewon gateway), right-click on the Ewon gateway in eCatcher and select **Go offline**.*

5 Global Registration Key

5.1 Key Features

The key features of the *Global Registration Key* are as follows:

- It is useful if all Ewon gateways have same network settings.
- There is no need to create the Ewon gateway first inside your Talk2M account.
- We recommend this method for bulk Ewon gateways configuration needs.

5.2 Process

5.2.1 Step 1: Export the Global Registration Key

To export the **<Global Registration Key>** to your SD card or USB drive, proceed as follows:

1. Open the eCatcher application.
 - ▶ Log into your Talk2M account as a user with administrator rights
2. Click the **Account** icon on eCatcher's main interface.
 - The **<Account Properties>** screen will appear.
3. If needed, click the **Show Advanced Settings** link to show additional account settings.
4. Click on the **Export Key to SD Card** button from the **<Ewon Auto-Registration>** section.
 - ▶ Select the location of your SD card or USB drive.
 - ▶ You can optionally enter a comment here as well. This comment will be saved with the **<Global Registration Key>** on the SD card or USB drive.
5. Click **Export**.

eCatcher saves a file called **T2M.txt** to the SD card/USB drive.

If you will use the SD card/USB drive to configure other parameters — as described in *AUG-0062 – Easy Commissioning Via SD card or USB drive* — you can save the required files now.

5.2.2 Step 2: Configure your Ewon gateway with SD card/USB drive

To configure the Ewon gateway using the SD card/USB drive, follow the instructions in *AUG-0062 Easy Commissioning Via SD card or USB drive*.

If the process is successful, then the **<T2M>** LED will appear green right after the Ewon gateway's final reboot.

5.2.3 Step 3: Approve the Ewon gateway in eCatcher

When the Ewon gateway is successfully configured with a **<Global Registration Key>**, it appears with the status **Pending** in eCatcher and requires an approval.

To approve the Ewon gateway in eCatcher, you will need to click on the **Approved** button. Approving an Ewon gateway will conclude the process to add an imported Ewon into the Talk2M account

There are two choices possible when an Ewon gateway is labeled as **Pending**:

- **Approve this Ewon**

The Ewon gateway is simply added to the Talk2M account. You will be prompted to enter the properties for the Ewon gateway.

- **Replace an existing Ewon**

The existing but unused Ewon gateway in the Talk2M is replaced by the newly imported Ewon gateway. The properties of the old Ewon gateway are transferred to the new Ewon.

