



Change the LAN IP Address of an Ewon

Using eBuddy

SOLUTION SHEET

KB-0064-00 1.1 en-US ENGLISH

Important User Information

Liability

Every care has been taken in the preparation of this document. Please inform HMS Industrial Networks SA of any inaccuracies or omissions. The data and illustrations found in this document are not binding. We, HMS Industrial Networks SA, reserve the right to modify our products in line with our policy of continuous product development. The information in this document is subject to change without notice and should not be considered as a commitment by HMS Industrial Networks SA. HMS Industrial Networks SA assumes no responsibility for any errors that may appear in this document.

There are many applications of this product. Those responsible for the use of this device must ensure that all the necessary steps have been taken to verify that the applications meet all performance and safety requirements including any applicable laws, regulations, codes, and standards.

HMS Industrial Networks SA will under no circumstances assume liability or responsibility for any problems that may arise as a result from the use of undocumented features, timing, or functional side effects found outside the documented scope of this product. The effects caused by any direct or indirect use of such aspects of the product are undefined, and may include e.g. compatibility issues and stability issues.

The examples and illustrations in this document are included solely for illustrative purposes. Because of the many variables and requirements associated with any particular implementation, HMS Industrial Networks SA cannot assume responsibility for actual use based on these examples and illustrations.

Intellectual Property Rights

HMS Industrial Networks SA has intellectual property rights relating to technology embodied in the product described in this document. These intellectual property rights may include patents and pending patent applications in the USA and other countries.

Table of Contents

Page

1	Preface	3
1.1	About This Document.....	3
1.2	Document History	3
1.3	Related Documents	3
1.4	Trademark Information	3
2	Select an Appropriate IP Address	4
3	Set the Ewon LAN IP Address	6
3.1	Requirements	6
3.2	Procedure	6

This page intentionally left blank

1 Preface

1.1 About This Document

The present document explains how to modify the LAN IP address of an Ewon Cosy or an Ewon Flexy using eBuddy. It also explains how to choose wisely this IP address based on network configuration.

For additional related documentation and file downloads, please visit www.ewon.biz/support.

1.2 Document History

Version	Date	Description
1.0	2015-02-04	Original document
1.1	2019-02-06	Changed: General template

1.3 Related Documents

Document	Author	Document ID

1.4 Trademark Information

eWON® is a registered trademark of HMS Industrial Networks SA. All other trademarks mentioned in this document are the property of their respective holders.

2 Select an Appropriate IP Address

If you want to configure your Ewon device (Cosy or Flexy), especially its remote access, you need to pay attention to the different IP ranges involved in the company's network.

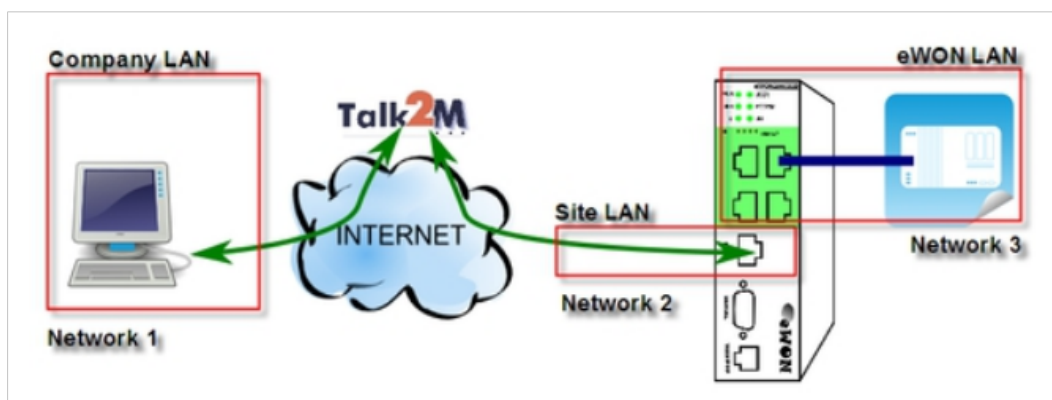


Fig. 1 Example of network in a company

If you want to allow routes to the device plugged in to the Ewon LAN, the following conditions must be met:

- **Network 1 <> Network 3:** Company LAN address range must differ from Ewon LAN address range.
- **Network 2 <> Network 3:** Site LAN address range, which is the Ewon WAN, must differ from Ewon LAN address range.

The company network address ranges (Company & Site LAN in the example above) are specified and managed by the respective network administrators.

These ranges cannot be changed and most of the time, the IP addresses are provided by a DHCP server.

Because you know the ranges used on the Company LAN and on the Site LAN, you must select a range for the Ewon LAN that is outside those network ranges.

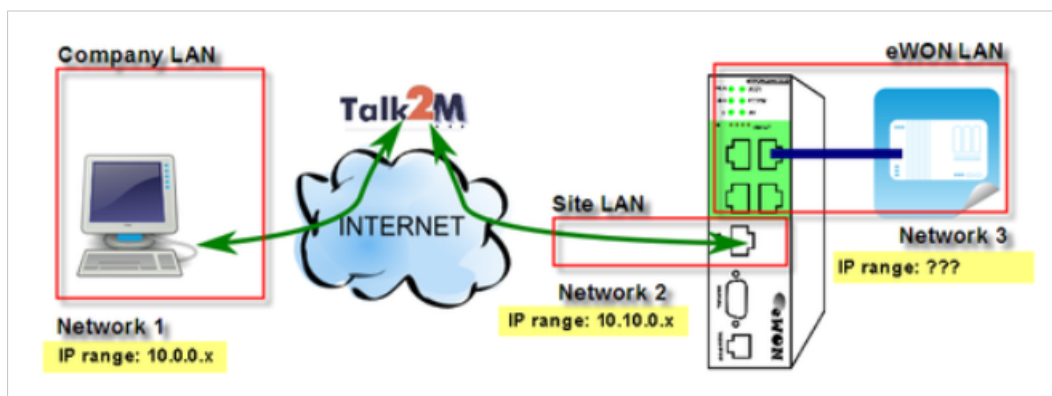


Fig. 2 Choice of an IP address for the Ewon LAN — 1

In the above example, we could select addresses in the "192.168.0.#" IP range for the Ewon LAN port and all the devices behind the Ewon as it doesn't overlap either with the Company LAN range nor with the Site LAN range.

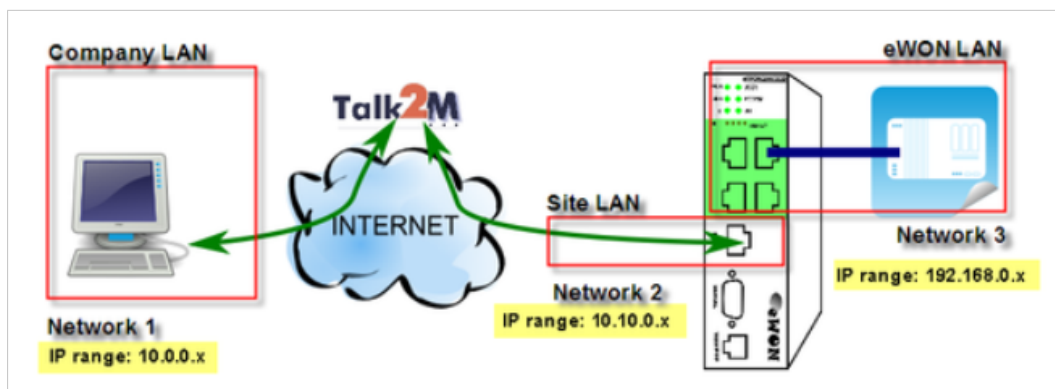


Fig. 3 Choice of an IP address for the Ewon LAN — 2

3 Set the Ewon LAN IP Address

Factory settings (out of the box or after a reset level 2) pre-configured the Ewon device with the LAN IP address set to 10.0.0.53.

Based on the explanation described in [Select an Appropriate IP Address, p. 4](#), you are able to choose an appropriate IP address suitable for your Ewon.

3.1 Requirements

Before modifying the LAN IP address of your Ewon, make sure you have the following items:

- [eBuddy](#): this software is helpful to upgrade, perform/restore backups or change the IP address of your Ewon.
- IP address destined to the Ewon.

3.2 Procedure

In our example, we change the default factory address “10.0.0.53” to “192.168.0.53”. This address fits in the range of the PLC and doesn’t interfere with the Company LAN.

The following procedure explains how to modify the LAN IP address of your Ewon:

1. Open eBuddy.
2. Select the Ewon that needs to be modified.

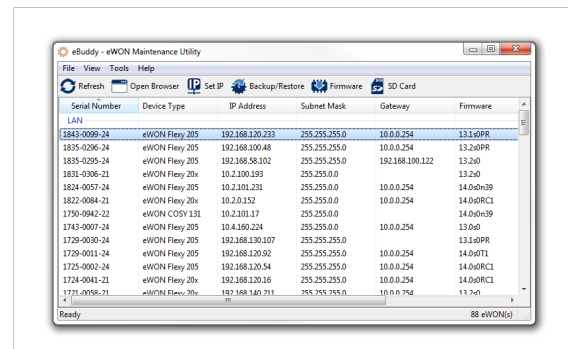


Fig. 4 Selection of your Ewon

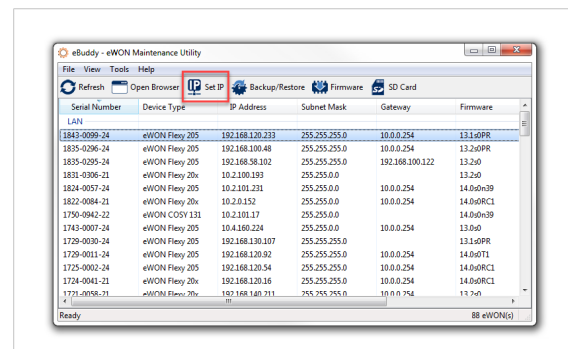


Fig. 5 Beginning of the IP modification process

3. Different methods start the IP modification process. Choose one from the following propositions:
 - Hit the *Set IP* button from the menu.
 - From the top menu bar, go to *Tools > Set IP Address*.
 - Press “F2” shortcut.

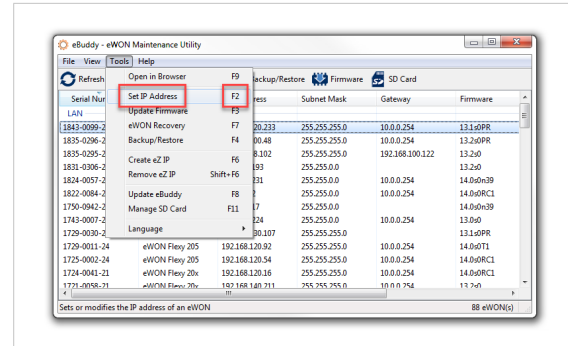


Fig. 6 Beginning of the IP modification process

4. The “serial number” field should already be filled.

If it is not the case, you can find the serial number of your Ewon on a white label stuck on the device itself. The serial number is under the form XXXX-XXXX-XX.

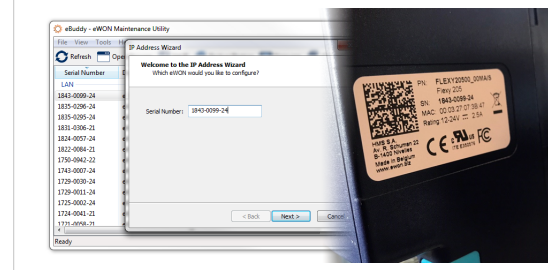


Fig. 7 Insertion of the serial number

5. Provide the new IP address and subnet mask for the Ewon LAN.

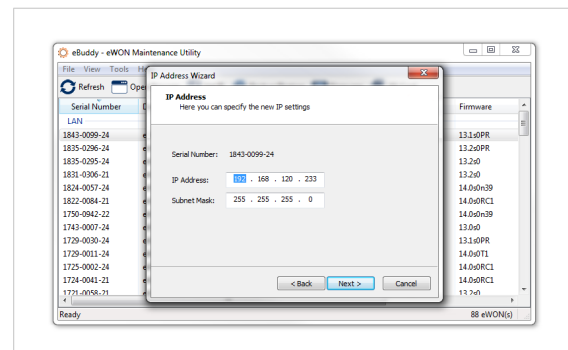


Fig. 8 Insertion of the new IP address

6. Wait until the address update is done and the device reboots.

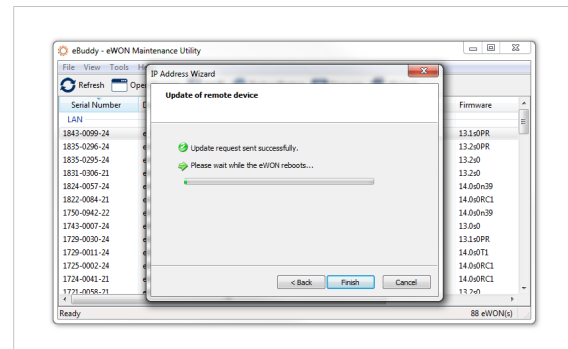


Fig. 9 Reboot of the Ewon

7. Click *Finish*.

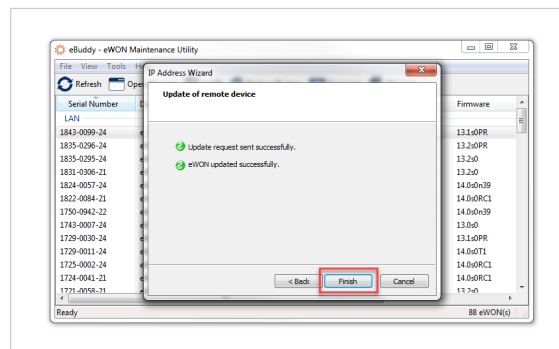


Fig. 10 End of the process

This page intentionally left blank

