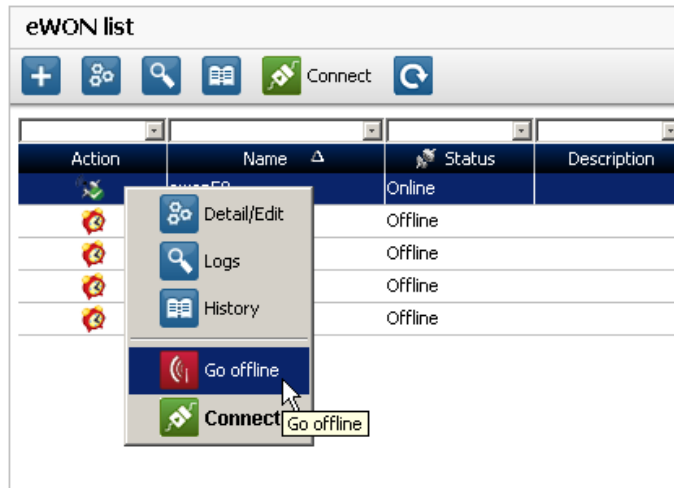


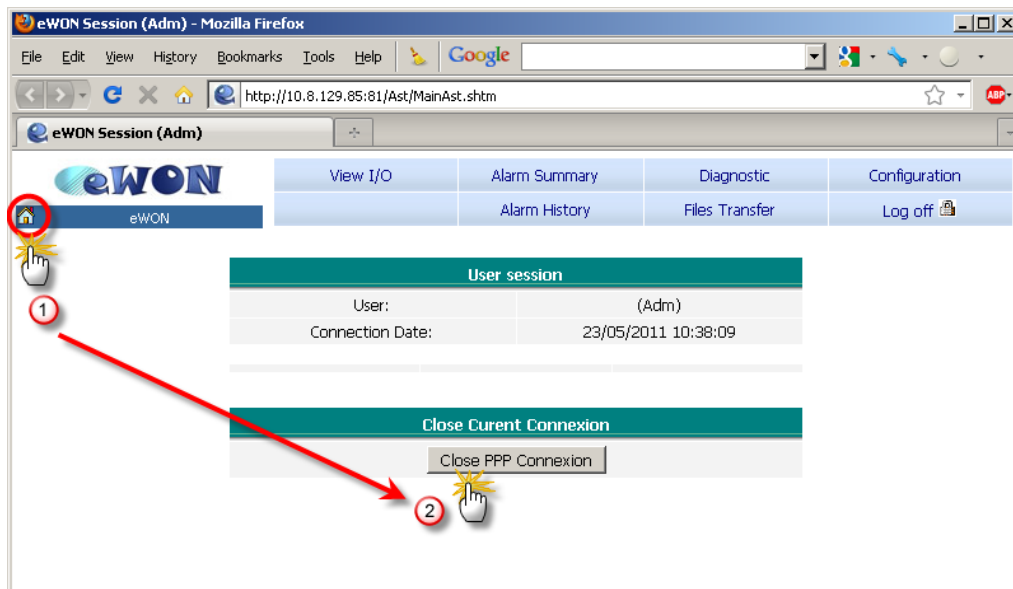
## Perform manually a "Go Offline" action

With eCatcher (for Talk2M Pro or Free+), you can do a "Go Offline" command to force the eWON to disconnect the modem connection.



If this command doesn't function correctly, you can force the modem disconnection manually.

For that, before disconnecting your eWON from Talk2M, goes simply to the eWON MainPage (the little house icon) and use the "Close PPP connection" button.



### - Note -

*That the browser will not display a result for this action ... because the eWON is not anymore reachable.*



## Revision

### Revision History

Revision Level	Date	Description
1.0	23/05/2011	Creation of document

#### Document build number: 13

#### Note concerning the warranty and the rights of ownership:

The information contained in this document is subject to modification without notice. Check <http://wiki.ewon.biz> for the latest documents releases.

The vendor and the authors of this manual are not liable for the errors it may contain, nor for their eventual consequences.

No liability or warranty, explicit or implicit, is made concerning the quality, the accuracy and the correctness of the information contained in this document. In no case the manufacturer's responsibility could be called for direct, indirect, accidental or other damage occurring from any defect of the product or errors coming from this document.

The product names are mentioned in this manual for information purposes only. The trade marks and the product names or marks contained in this document are the property of their respective owners.

This document contains materials protected by the International Copyright Laws. All reproduction rights are reserved. No part of this handbook can be reproduced, transmitted or copied in any way without written consent from the manufacturer and/or the authors of this handbook.

eWON sa, Member of ACT'L Group