

Example of a Task Planner entry

SOLUTION SHEET

KB-0212-00 1.1 en-US ENGLISH

1 Preface 3

- 1.1 About This Document 3
- 1.2 Document history 3
- 1.3 Related Documents 3
- 1.4 Trademark Information 3

2 Task Planner 4

- 2.1 Configuration 4

This page intentionally left blank

1 Preface

1.1 About This Document

This document explains how to set up an automated task in the task planner interface of the Ewon Flexy device.

For additional related documentation and file downloads, please visit www.ewon.biz/support.

1.2 Document history

Version	Date	Description
1.0	2015-02-11	First release
1.1	2019-10-11	Document layout update

1.3 Related Documents

Document	Author	Document ID
General Reference Guide for Flexy Family	HMS	RG-0008-00
General Reference Guide for Export Block Descriptor	HMS	RG-0009-00

1.4 Trademark Information

Ewon® is a registered trademark of HMS Industrial Networks SA. All other trademarks mentioned in this document are the property of their respective holders.

2 Task Planner

Since the Ewon firmware 5.7s0, the *Task Planner* of the Ewon Flexy device allows the scheduling of actions such as sending an email, an SMS or a file through FTP.

2.1 Configuration

The configuration of a task planner entry follows this steps flow:

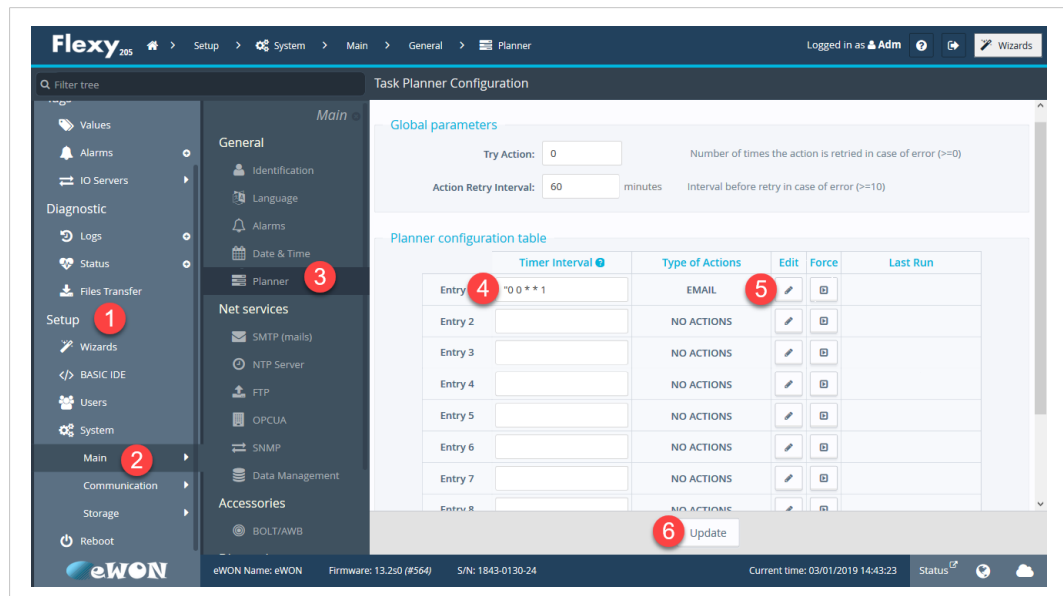


Fig. 1 Configuration of a task planner entry

1. Click on **<Setup>**.
2. Click on **<Main>**.
3. Click on **<Planner>**.
4. Set the **Timer Interval**.

For example: to receive, every Monday, the historical logging of the tag **<Temp>** for the past week, you should set the **Timer Interval** to: 0 0 * * 1, where the **Timer Interval** syntax is the following:

mm hh dd MMM DDD

- **mm** is the minute,
- **hh** is the hour (0-23),
- **dd** is the day of the month (1-31),
- **MMM** is the month (1-12) or (jan, feb, mar, apr, may, jun, jul, aug, sep, oct, nov, dec),
- **DDD** is the day of week (1-7) where 1 is Monday.



Each field can be replaced by the operator * (asterisk) to specify "all values". The complete list of operators and additional syntax examples can be found in the *General Reference Guide for Flexy Family* from the [Related Documents](#), p. 3.

- Click the **<Edit>** button to set the action the Ewon should performed. .

The screen is the same as for the *Alarm Action*: you can send an email, an SMS, a file through FTP, or trigger an SNMP trap.

In the **Email Attachment(s)** field, you can use Export Block Descriptors (explained in the General Reference Guide for Export Block Descriptor from the [Related Documents, p. 3](#)) to describe the data you want to export. In this case:

- **\$dtHL** means the data type is “Historical Log”.
- **\$ftT** means the format type is “text”.
- **\$tnTemp** means the tag name is “Temp”.
- **\$st_d7** means the start time is “7 days ago”.
- **\$et_s0** means the end time is “0 seconds ago or now”.
- **\$fnTempReport.csv** means the file name is “TempReport.csv”.

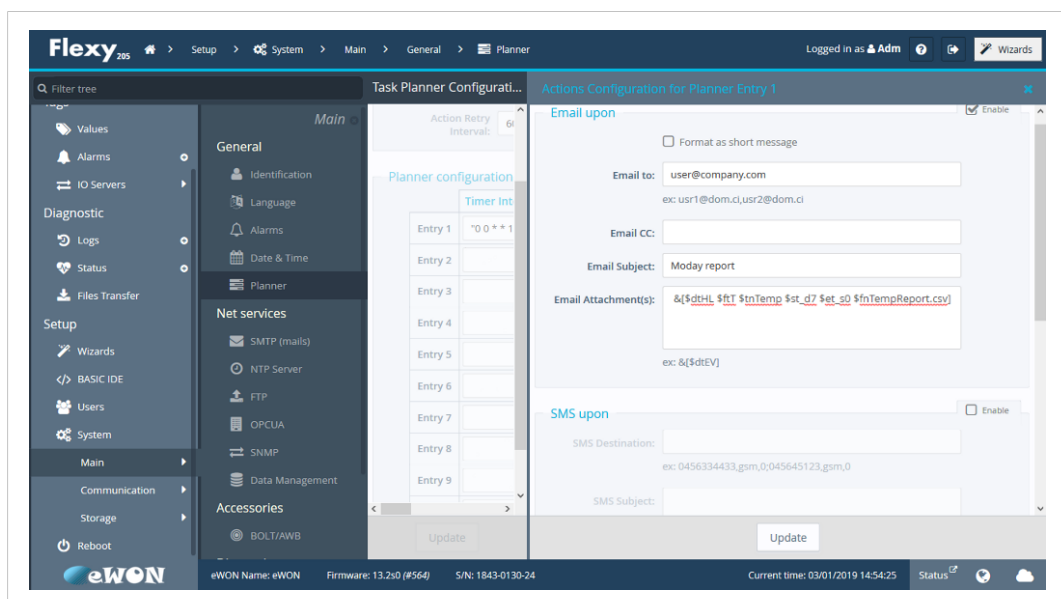


Fig. 2 Configuration of the action the Ewon should perform.

- Click the **<Update>** button.

