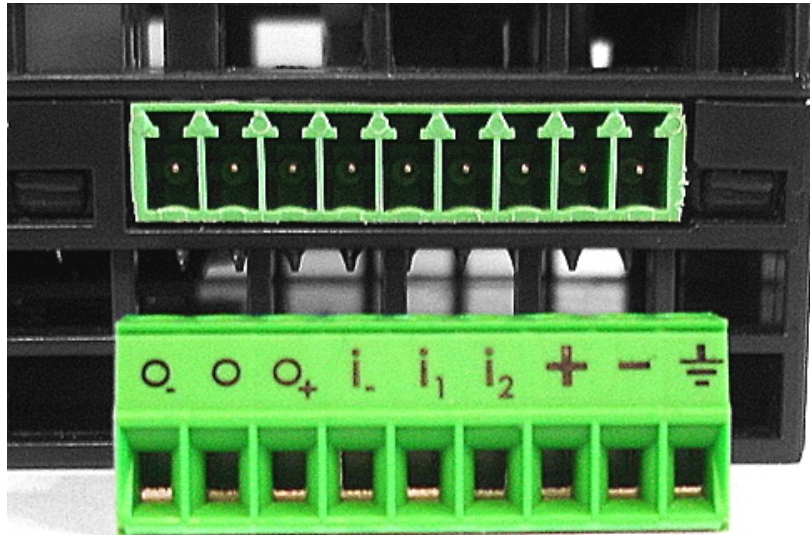


Configure the initial value of Digital Output 1 (DO1)

This Knowledge Base explains how the value of the Digital Output 1 – DO1 on the eWON Flexy model can be configured.



- Note -

The configuration of the DO1 is possible only if the version of eWON Flexy's firmware is 8.2s1 or higher.

By default, the DO1 is set to be open.

To change this default setting, you will have to modify the "DO1Init" parameter in the ComCfg text file. This parameter accepts two values:

DO1Init value	Description
0	The Digital Output is Off
1	The Digital Output is On

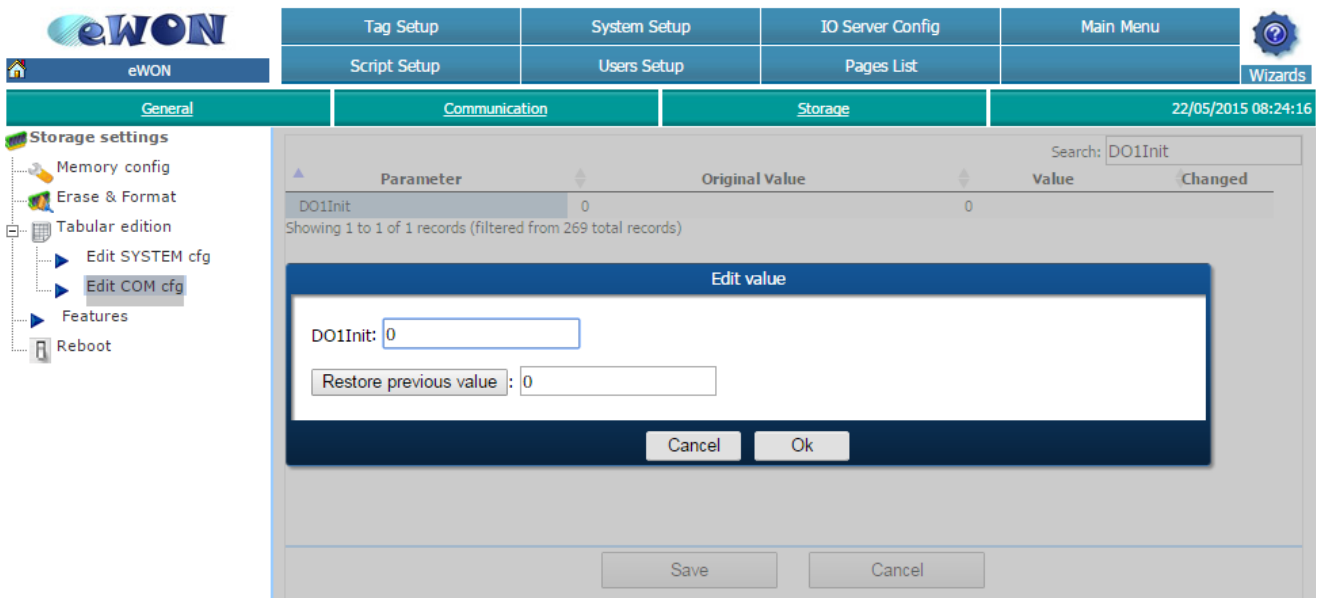
To do so, there are 2 methods:

- **via eWON's web interface**

On the homepage of eWON's web interface, go to

Configuration > System Setup > Storage > Tabular edition > Edit COM cfg

You will have a live access to the comcfg.txt file without the need of downloading the file first. Simply search for the "DO1Init" parameter, double-click on the parameter row, change its value and save the modification.



- **Via FTP**

On the homepage of eWON's web interface, go to

Files Transfer > comcfg.txt

A file will be downloaded on your computer. Simply search for the "DO1Init" parameter and change its value. When saving the file, do not forget to rename it to "comcfg.txt". Once done, upload the file on your eWON via FTP.



View I/O	Alarm Summary	Diagnostic	Configuration
	Alarm History	Files Transfer	Log off

File Name	Description
sstat.htm	Scheduled status as table
config.bin	Binary config
config.txt	Text config
comcfg.txt	Text COM config



Revision

Revision History

Revision Level	Date	Description
1.0	22/05/2015	Original document

Document build number: 14

Note concerning the warranty and the rights of ownership:

The information contained in this document is subject to modification without notice. Check <http://wiki.ewon.biz> for the latest documents releases.

The vendor and the authors of this manual are not liable for the errors it may contain, nor for their eventual consequences.

No liability or warranty, explicit or implicit, is made concerning the quality, the accuracy and the correctness of the information contained in this document. In no case the manufacturer's responsibility could be called for direct, indirect, accidental or other damage occurring from any defect of the product or errors coming from this document.

The product names are mentioned in this manual for information purposes only. The trade marks and the product names or marks contained in this document are the property of their respective owners.

This document contains materials protected by the International Copyright Laws. All reproduction rights are reserved. No part of this handbook can be reproduced, transmitted or copied in any way without written consent from the manufacturer and/or the authors of this handbook.

eWON sa, Member of ACT'L Group