

## Upgrade Firmware for Cosy131 and Flexy

PRODUCT TYPE: COSY 131, FLEXY

SSH-0304-01

Publication date 15/05/2023



## Important User Information

### **Disclaimer**

The information in this document is for informational purposes only. Please inform of any inaccuracies or omissions found in this document. disclaims any responsibility or liability for any errors that may appear in this document.

reserves the right to modify its products in line with its policy of continuous product development. The information in this document shall therefore not be construed as a commitment on the part of and is subject to change without notice. makes no commitment to update or keep current the information in this document.

The data, examples and illustrations found in this document are included for illustrative purposes and are only intended to help improve understanding of the functionality and handling of the product. In view of the wide range of possible applications of the product, and because of the many variables and requirements associated with any particular implementation, cannot assume responsibility or liability for actual use based on the data, examples or illustrations included in this document nor for any damages incurred during installation of the product. Those responsible for the use of the product must acquire sufficient knowledge in order to ensure that the product is used correctly in their specific application and that the application meets all performance and safety requirements including any applicable laws, regulations, codes and standards. Further, will under no circumstances assume liability or responsibility for any problems that may arise as a result from the use of undocumented features or functional side effects found outside the documented scope of the product. The effects caused by any direct or indirect use of such aspects of the product are undefined and may include e.g. compatibility issues and stability issues.

Copyright © 2022

# Table of Contents

<b>1. Introduction .....</b>	<b>1</b>
<b>2. Different upgrade methods .....</b>	<b>2</b>
2.1. Upgrade using eBuddy .....	2
2.2. Upgrade using an SD card/USB drive .....	5
2.2.1. Configure SD card/USB drive .....	5
2.2.2. Configure Ewon device for upgrade .....	7
2.3. Upgrade using FTP access on the Ewon device .....	8
<b>3. Pivot Firmware .....</b>	<b>11</b>
3.1. Upgrade with eBuddy .....	11
3.2. Upgrade with SD card/USB drive .....	11
3.3. Upgrade with FTP .....	12
<b>4. Talk2M Firmware Management (Talk2M Pro only) .....</b>	<b>13</b>
<b>5. Firmware recovery .....</b>	<b>14</b>
5.1. Recovery using an SD card/USB Drive .....	14
5.1.1. Configure SD card/USB drive for recovery .....	14
5.1.2. Configure Ewon device .....	16
5.2. Recovery using eBuddy .....	17

# 1. Introduction

Keeping an Ewon device's firmware updated helps protect it against known security threats and gives you access to the latest fixes and features.

There are several different ways to update your Ewon device's firmware making it easy to keep your Ewon device up to date.

This document is for Ewon® Cosy 131 devices and Ewon Flexy devices.

For Ewon Cosy+ devices, see [SSH-0302-01 - Upgrade Firmware of Ewon Cosy+ Devices](#).

## 2. Different upgrade methods

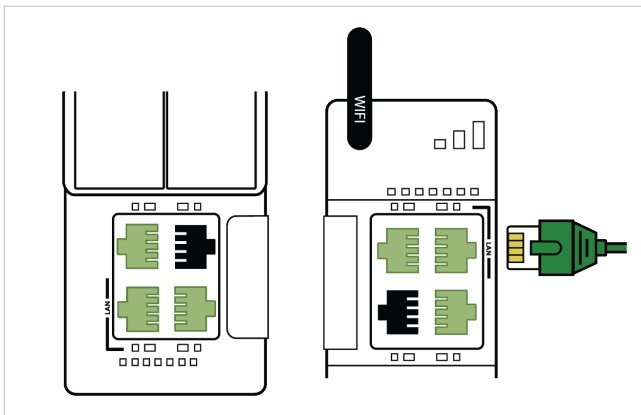
### 2.1. Upgrade using eBuddy

When you have a single or small number of Ewon® Cosy 131 or Ewon Flexy devices to update, you can update the Ewon device directly from your PC using the eBuddy software. This method can also be used if you need to update your Ewon® Cosy 131 or Flexy remotely.

[Download eBuddy.](#)

To update the firmware using eBuddy:

1. Connect to your Ewon device.
  - Local connections:



Local connections of the Ewon Flexy 205 on the left, local connections of the Ewon® Cosy 131 on the right.

For a Ewon® Cosy 131 or Ewon Flexy 205, port 1 is always a LAN port. For other Flexy models, the LAN port is on the base unit.

Figure 1. Connect your PC to a LAN port of your Ewon device.

- Remote connections:

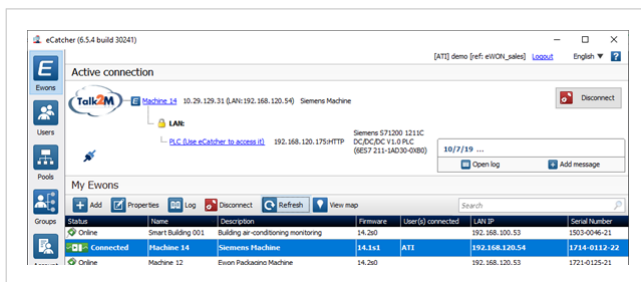
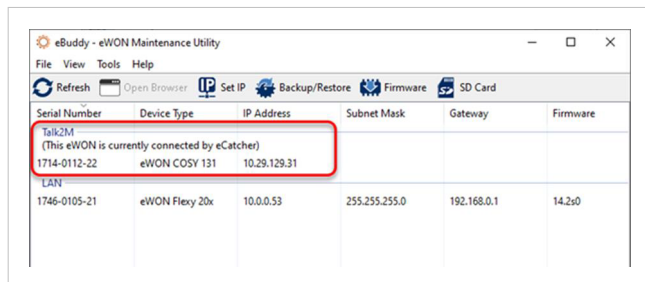
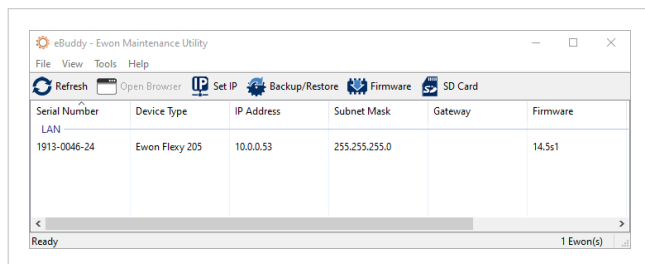


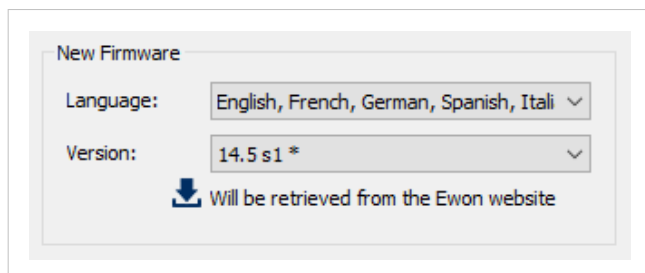
Figure 2. Connect to your Ewon device through eCatcher.

## 2. Launch eBuddy.

The connected Ewon device is visible in eBuddy. Locally connected Ewon devices appear in the LAN section and remotely accessible Ewon devices appear in the Talk2M section.



3. Select the Ewon device.
4. Click the **Firmware** button or browse the **Tools\Update Firmware** menu option
5. Enter the login credentials of the Ewon device.
6. Select the firmware version to apply and click **Next**.

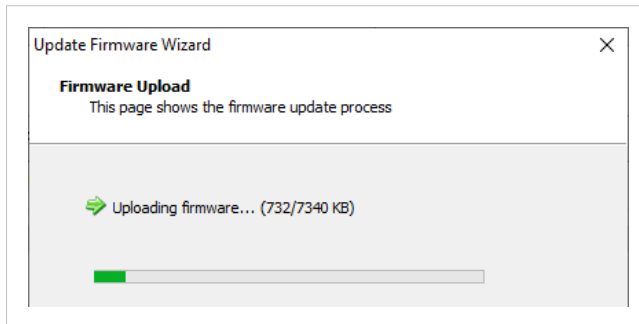


### NOTICE

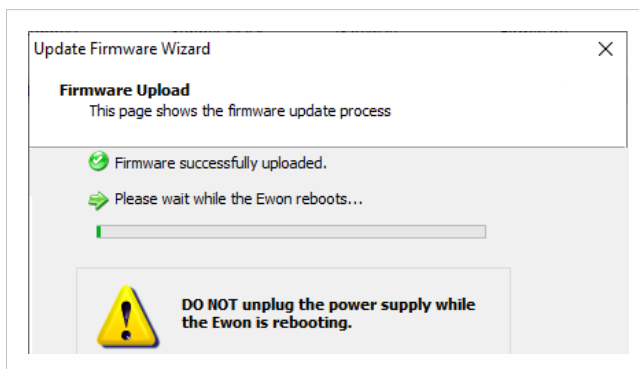
If the latest firmware version file is not on your PC, eBuddy automatically downloads it from the Internet. If you will not have Internet access when you are updating your Ewon device,

download the files in advance from the **Tools\Update eBuddy** menu option. You can also use this same method if you want to update to a version that is not the latest version.

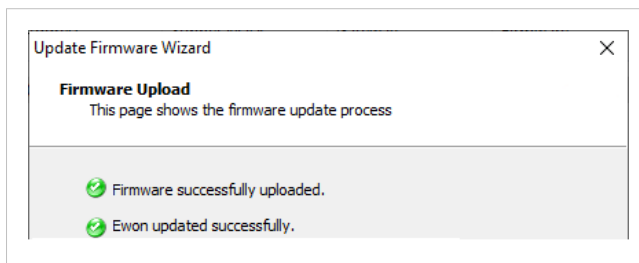
- a. eBuddy downloads the firmware file if necessary and transfers it to the Ewon device.



- b. Once the firmware is transferred, the upgrade process starts.



- c. eBuddy notifies you when the process is complete.

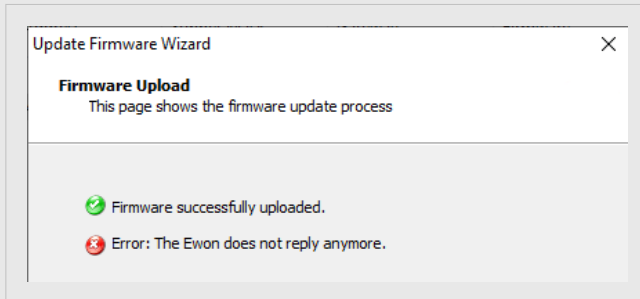


As part of the update process, the Ewon device reboots. During the reboot, the Ewon device disconnects from Talk2M. If you are connected to the device through eCatcher, eCatcher indicates that the remote connection was lost and that it is waiting for reconnection.

If the Ewon device is connected through a permanent connection, it reconnects automatically. For a triggered connection, you need to send the wakeup notification to trigger the reconnection.

**NOTICE**

If you are connected to the Ewon device remotely, eBuddy may time out before the connection is re-established. If this occurs, eBuddy shows an error message that the Ewon device does not reply. This is expected.



## 2.2. Upgrade using an SD card/USB drive

If you have many Ewon devices to update at the same time or if they are being updated by someone with little experience with Ewon devices, you can update them using a USB drive or SD card.

**NOTICE**

Only Ewon devices with an integrated SD card reader and/or USB port support firmware update through SD card/USB drive. Not all Ewon models include a USB port. Please check which interfaces are available on your device configuration before proceeding.

### 2.2.1. Configure SD card/USB drive

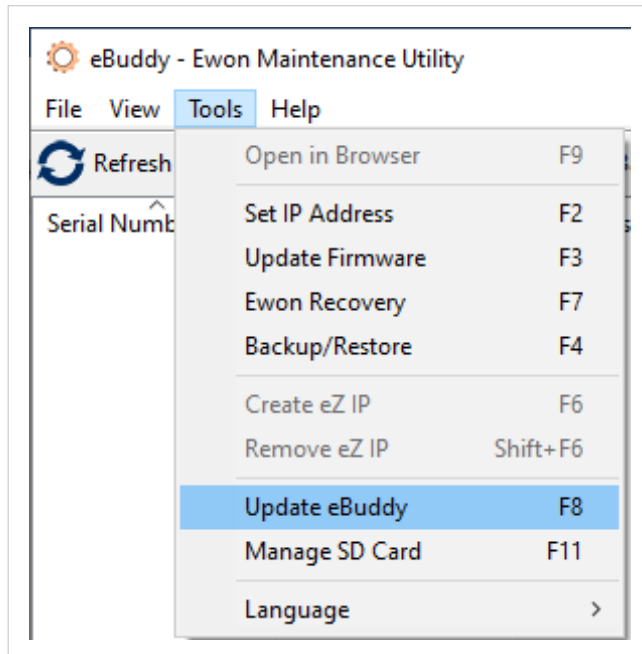
The firmware files required for updating using an SD card/USB drive can either be retrieved from the [Ewon firmware website](#) or through eBuddy. We recommend using eBuddy to ensure that the files are saved and named correctly.

Download eBuddy.

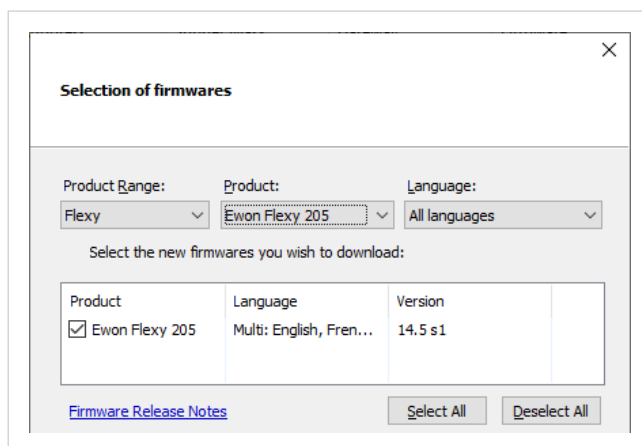
To configure the SD card/USB drive:



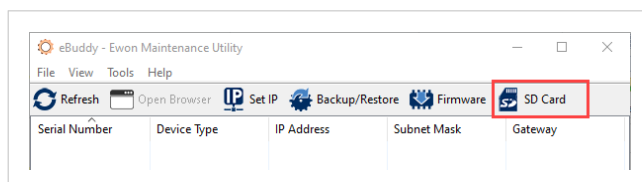
1. Launch eBuddy
2. Download the latest firmware files to your PC by pressing **F8** or browsing the **Tools\Update eBuddy** menu option.



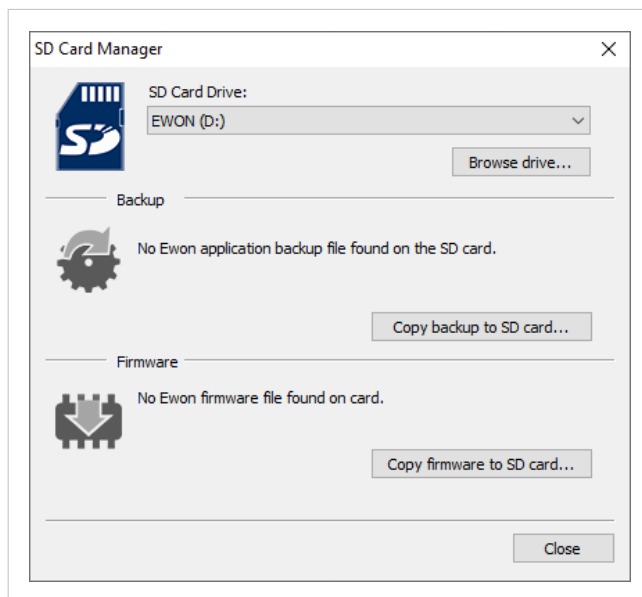
3. Follow the prompts to download the correct firmware files for your product.



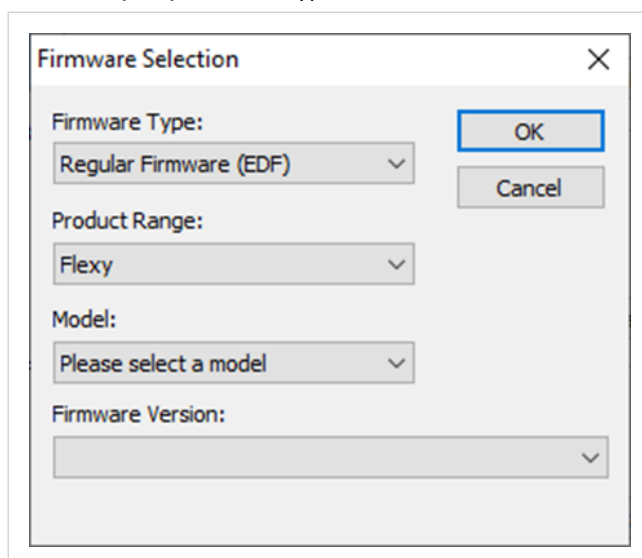
4. Insert the SD card/USB drive into the appropriate port of your PC.
5. Press the **SD Card** button or browse the **Tools\Manage SD card** option.



6. Select the drive for your SD card/USB drive and click the **Copy firmware to SD card** button.



7. Follow the prompts to select which firmware to save to your SD card/USB drive. Select the **Regular Firmware (EDF)** firmware type.

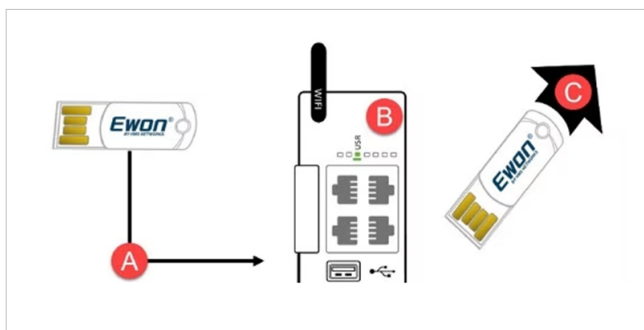


8. Remove the SD card/USB drive from your PC.

### 2.2.2. Configure Ewon device for upgrade

To apply the new firmware to your Ewon device:

1. Insert the SD card/USB drive into the powered off Ewon device.

**NOTICE**

Upon insertion, the USB LED will flash orange to indicate it has detected the files.

2. Wait until the USB LED state changes to solid GREEN.
3. Remove the SD card/USB drive. This triggers a reboot of the device and the firmware file is applied.

More information about configuring your Ewon device with an SD card or USB drive is available in [AUG-0062-00 Easy Commissioning via SD Card or USB drive](#).

## 2.3. Upgrade using FTP access on the Ewon device

The Ewon device's firmware can be upgraded using FTP.

You can do this using any FTP client program, but be sure that the client is using binary transfer mode and not ASCII transfer mode.

To update the firmware by FTP:

1. Download the correct firmware file for your Ewon model from the [Ewon firmware website](#).
2. Rename the firmware file **ewonfwr.edf**. If the file is not named ewonfwr.edf, the Ewon device does not recognize it as a firmware update file.
3. Connect to your Ewon device. This can be either through a local connection or through a remote connection using eCatcher.

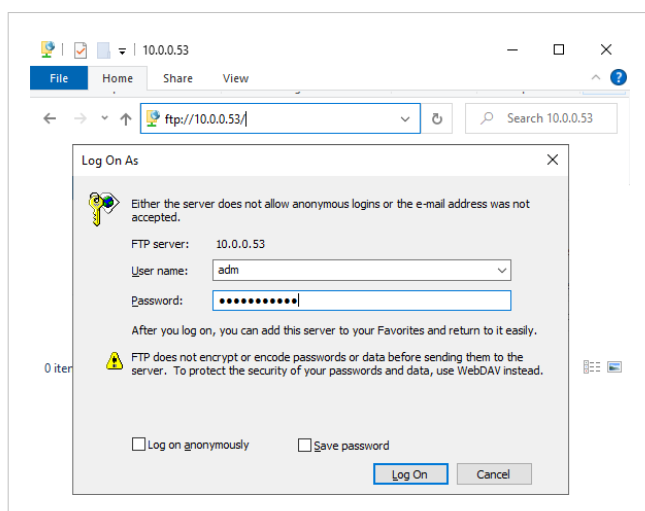


#### NOTICE

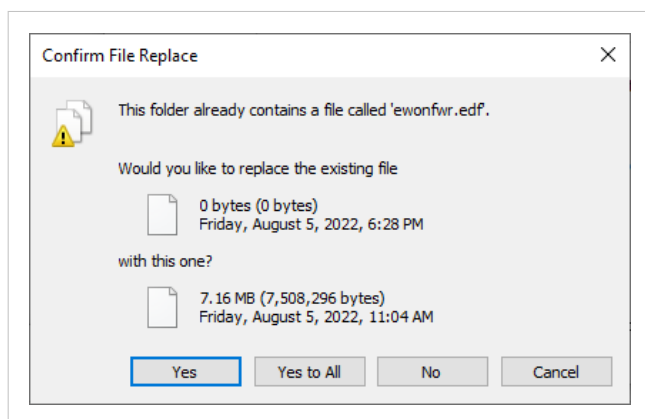
If you are connecting to your Ewon device through a local connection, your PC's IP address and the Ewon device's LAN IP address must be in the same network range.

If your PC does not have a compatible IP address, launch eBuddy, select your Ewon device from the list, and press **F6** or select **Create eZ IP** from the **Tools** menu.

4. Open your FTP client software. Use the Ewon device's IP address as the FTP server address and Ewon user credentials with firmware update rights as the login credentials. Typically, the adm user credentials are used.



5. Drag the new firmware to be uploaded to the root of the Ewon device's file system. A confirmation window appears.



6. Confirm that you want to overwrite the existing file.
7. Once the file transfer is complete, close the connection between the FTP client and the Ewon device. Depending on your FTP client, this could mean clicking a disconnect button or closing the application.

When you close the connection between the Ewon device and the FTP client, the Ewon device begins to apply the firmware file. The Ewon **USR LED** blinks **RED**.

Do NOT power off the Ewon device during this operation. When the firmware update process is complete, the Ewon device automatically reboots.

## 3. Pivot Firmware

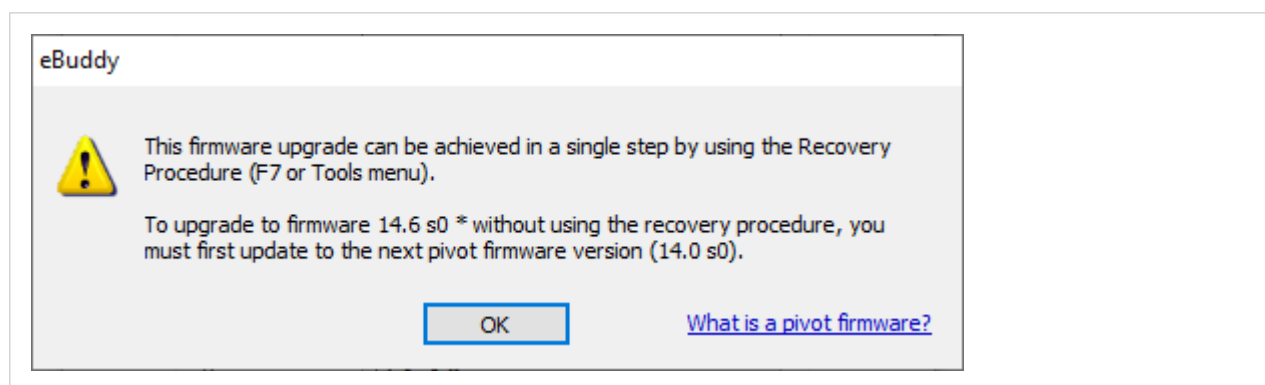
**Pivot firmware** versions are firmware versions that are mandatory to upgrade to before going any higher.

All major versions (v12.0s0, v13.0s0, ...) are pivot firmware versions.

### 3.1. Upgrade with eBuddy

To upgrade to a firmware version that is higher than the next pivot firmware with eBuddy, first upgrade to the next pivot firmware and then upgrade to your desired version.

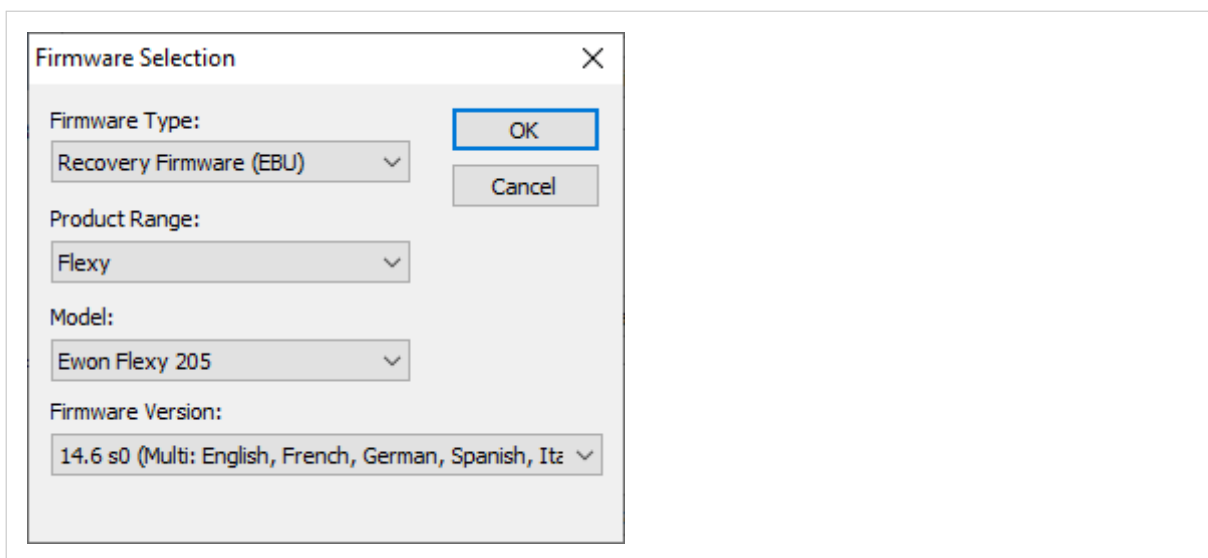
If you try to upgrade without installing the pivot version first, eBuddy displays an error message.



### 3.2. Upgrade with SD card/USB drive

To upgrade to a firmware version that is higher than the next pivot firmware using an SD card or USB drive, follow the procedure described for standard firmware updates with an SD card/USB drive with two changes.

1. When making the firmware selection, select "Recovery Firmware (EBU)" as the firmware type.

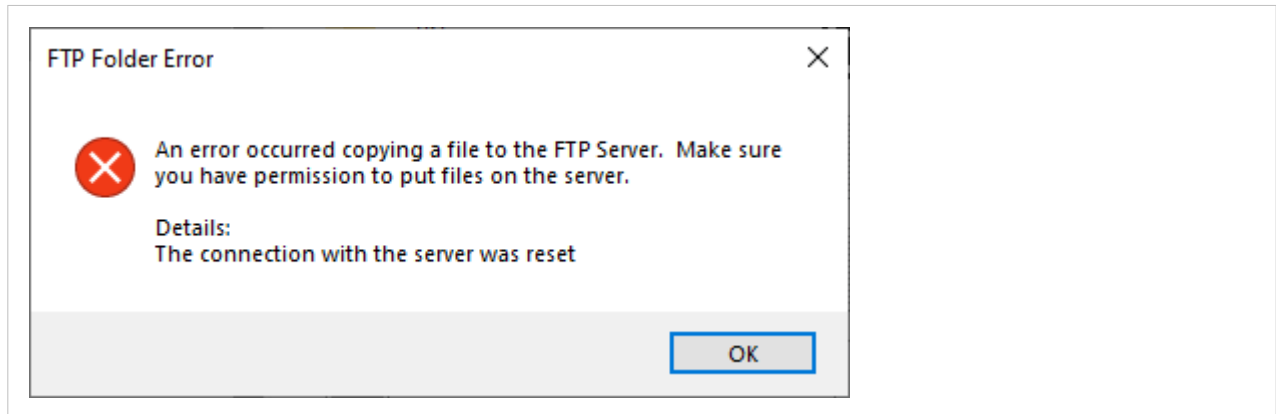


2. The SD card/USB drive must be inserted into the Ewon device while the Ewon device is powered off. Then, while the SD card/USB drive is inserted, power on the Ewon device. The recovery file is applied during the boot process.  
Leave the SD card/USB drive inserted until the Ewon device has fully booted and the **USR LED** flashes **green**.

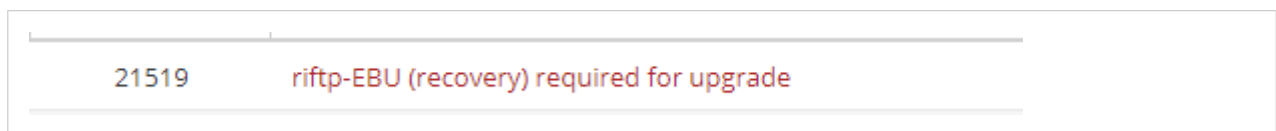
### 3.3. Upgrade with FTP

To upgrade to a firmware version that is higher than the next pivot firmware with FTP, first upgrade to the next pivot firmware and then upgrade to your desired version.

If you try to upgrade without installing the pivot version first, your FTP client displays an error message.



An error message also appears in the event log of your Ewon device.



## 4. Talk2M Firmware Management (Talk2M Pro only)

The screenshot shows the eCatcher (6.9.2) interface. The sidebar on the left contains icons for Ewons, Users, Pools, Groups, Account, Firmware, and Settings. The main content area is divided into several sections:

- Filters:** Includes checkboxes for Status (Online, Offline, Offline & Wakeable), Auto-update enabled in Ewon (Yes, No), Firmware update (Security Patch, Stable Version), and Firmware update status (In progress, Success, Failure).
- Overview:** Displays summary statistics: Number of Ewons: 23, Ewons running a firmware with a security issue and upgradable: 0, and Ewons upgradable to a more recent firmware: 4.
- Firmware Management:** Features a table of devices with columns for Status, Name, Description, User(s), Model, Firmware, Latest Security, Latest Stable Version, Last Firmware, Current Update Status, Auto-updat..., PLC, Country, and IP add. The table lists two devices: Machine 03 (Mitsubishi Machine) and Machine 06 (Allen Bradley Machine).

Starting in eCatcher version 6.10, Talk2M Pro administrators can use the Firmware Management feature in eCatcher to update firmware versions on certain types of Ewon devices.



### IMPORTANT

This feature is **NOT** available for Ewon Cosy 131 and Ewon Flexy devices.

For Ewon® Cosy 131 and Ewon Flexy devices, you can use the screen to see the currently installed firmware versions and the next available release for your devices.



## 5. Firmware recovery

The Ewon® Cosy 131 and Ewon Flexy support a special type of firmware update called an Ewon recovery.

The Ewon recovery can be used to:

- Recover an unresponsive Ewon device
- Downgrade the firmware
- Upgrade the firmware to a higher version without installing intermediate pivot firmware versions, for example upgrading from v12 to v14 without installing v13.

An Ewon recovery must be performed **locally** using either an SD card/USB drive or using eBuddy.



### NOTICE

When a recovery is used to recover an unresponsive Ewon device or to downgrade the firmware, data and configuration settings on the Ewon device will be lost.

### 5.1. Recovery using an SD card/USB Drive

If you are applying a firmware version that is higher than the firmware version currently running on your Ewon device, follow the instructions in the [Upgrade with SD card/USB drive \(page 11\)](#) section.

To apply the same firmware version or a lower firmware version, use the following procedure.

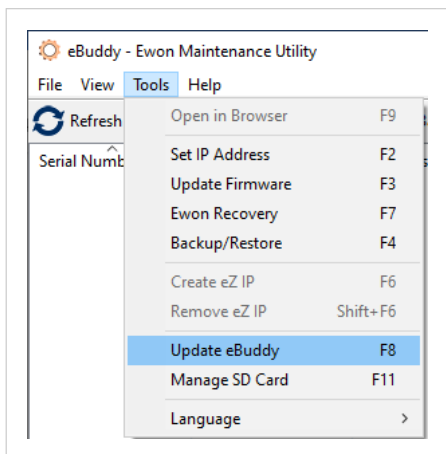
#### 5.1.1. Configure SD card/USB drive for recovery

The firmware files required for updating using an SD card/USB drive can either be retrieved from the [Ewon firmware website](#) or through eBuddy. We recommend using eBuddy to ensure that the files are saved and named correctly.

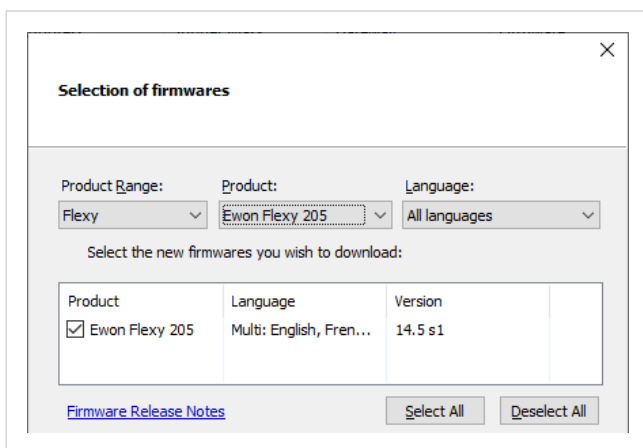
Download eBuddy.

To configure the SD card/USB drive:

1. Launch eBuddy
2. Download the latest firmware files to your PC by pressing **F8** or browsing the **Tools\Update eBuddy** menu option.



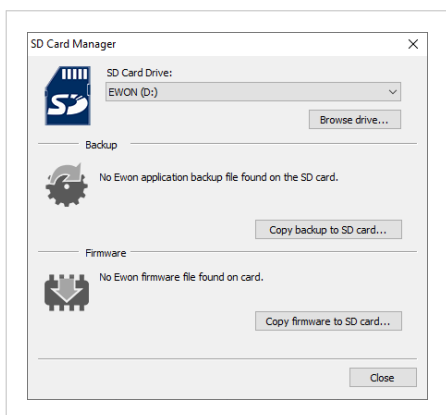
3. Follow the prompts to download the correct firmware files for your product.



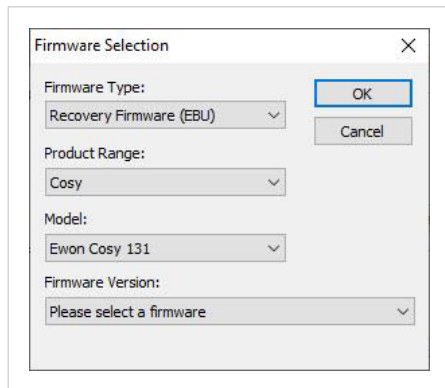
4. Insert the SD card/USB drive into the appropriate port of your PC.
5. Press the **SD Card** button or browse the **Tools\Manage SD card** option.



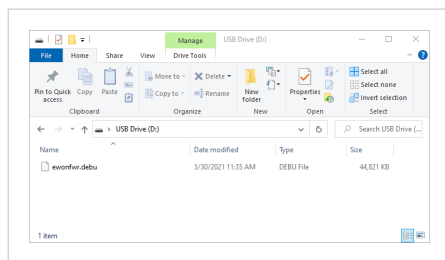
6. Select the drive for your SD card/USB drive and click the **Copy firmware to SD card** button.



- Follow the prompts to select which firmware to save to your SD card/USB drive. Select the **Recovery Firmware (EBU)** firmware type.



- If the firmware version of the file is **lower** than the current firmware version on the Ewon device, rename the saved file to ewonfwr.debu.



- Remove the SD card/USB drive from your PC.

### 5.1.2. Configure Ewon device

To apply the new firmware to your Ewon device:

- Insert the SD card/USB drive into the powered off Ewon device.
- While pressing the reset button, power on the Ewon device. Continue pressing the reset button until the **USR LED** turns solid **ORANGE**.
- Once the USR LED is solid orange, release the reset button.



#### NOTICE

If you do not release the reset button while the USR LED is solid orange, the Ewon device may enter its reset process. If the USR LED turns red, continue pressing the reset button and power off the device.

Failure to do so can result in a configuration reset.

When the reset button is released, the Ewon device processes the recovery files. This process can take a few minutes.

When the recovery ends, the USR LED shows the recovery result for 3 seconds.

- GREEN: Success
- RED: Failure

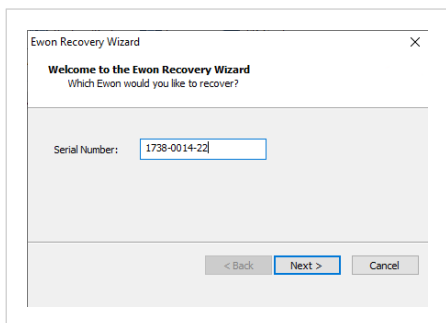
The Ewon device then continues its boot process. An additional reboot of the Ewon device is not necessary.

More information about configuring your Ewon device with an SD card or USB drive is available in [AUG-0062-00 Easy Commissioning via SD Card or USB drive](#).

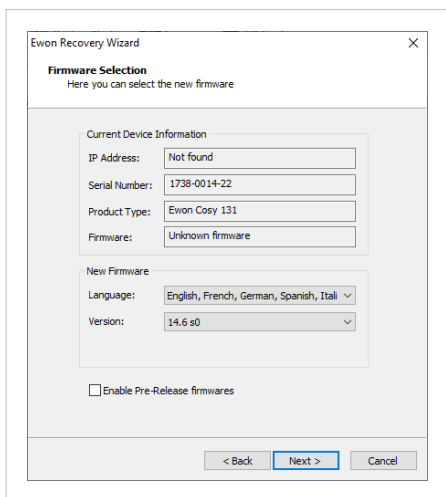
## 5.2. Recovery using eBuddy

To perform a recovery using eBuddy:

1. Connect your PC to a LAN port on your Ewon device with a 10/100 switch between the computer and the Ewon device.  
For a Cosy 131 or Flexy 205, port 1 is always a LAN port. For other Flexy models, the LAN port is on the base unit.
2. Launch eBuddy.
3. Press **F7** or select **Ewon Recovery** from the Tools menu.
4. Enter the serial number of your Ewon device.

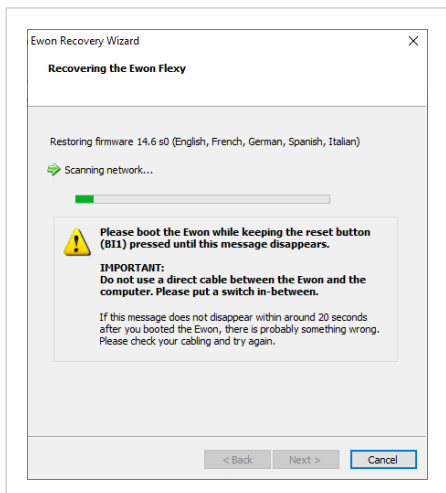


5. Follow the prompts to confirm the correct Ewon device and firmware version.

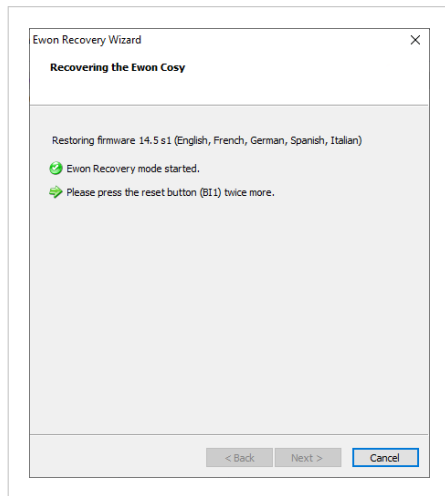
**NOTICE**

If your Ewon device is unresponsive, the IP address and current firmware version may be incorrect. It will not impact the recovery process.

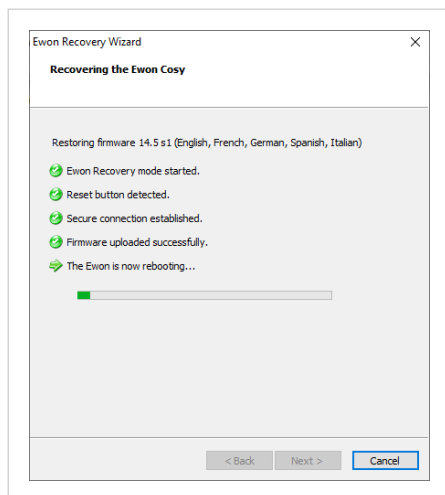
6. Click **Next**. eBuddy begins scanning the network to find the Ewon device in recovery mode.



7. Cycle power on the Ewon device while pressing the reset button. Continue pressing the **reset button** until eBuddy detects the Ewon device.



8. Press the **reset button** two more times to start the recovery process.
9. Wait while eBuddy applies the necessary files. When the process is complete, the Ewon device **reboots**.

**NOTICE**

If the **Bootloader** is updated as part of the recovery, eBuddy updates the Bootloader and then asks you to restart the recovery process.