

viewON 4.5
RELEASE EXPLAINED

Important User Information

Disclaimer

The information in this document is for informational purposes only. Please inform HMS Industrial Networks of any inaccuracies or omissions found in this document. HMS Industrial Networks disclaims any responsibility or liability for any errors that may appear in this document.

HMS Industrial Networks reserves the right to modify its products in line with its policy of continuous product development. The information in this document shall therefore not be construed as a commitment on the part of HMS Industrial Networks and is subject to change without notice. HMS Industrial Networks makes no commitment to update or keep current the information in this document.

The data, examples and illustrations found in this document are included for illustrative purposes and are only intended to help improve understanding of the functionality and handling of the product. In view of the wide range of possible applications of the product, and because of the many variables and requirements associated with any particular implementation, HMS Industrial Networks cannot assume responsibility or liability for actual use based on the data, examples or illustrations included in this document nor for any damages incurred during installation of the product. Those responsible for the use of the product must acquire sufficient knowledge in order to ensure that the product is used correctly in their specific application and that the application meets all performance and safety requirements including any applicable laws, regulations, codes and standards. Further, HMS Industrial Networks will under no circumstances assume liability or responsibility for any problems that may arise as a result from the use of undocumented features or functional side effects found outside the documented scope of the product. The effects caused by any direct or indirect use of such aspects of the product are undefined and may include e.g. compatibility issues and stability issues.

TECHNICAL WRITER	LAST REVISION
HMS BU Ewon - Technical Services	23/12/2021

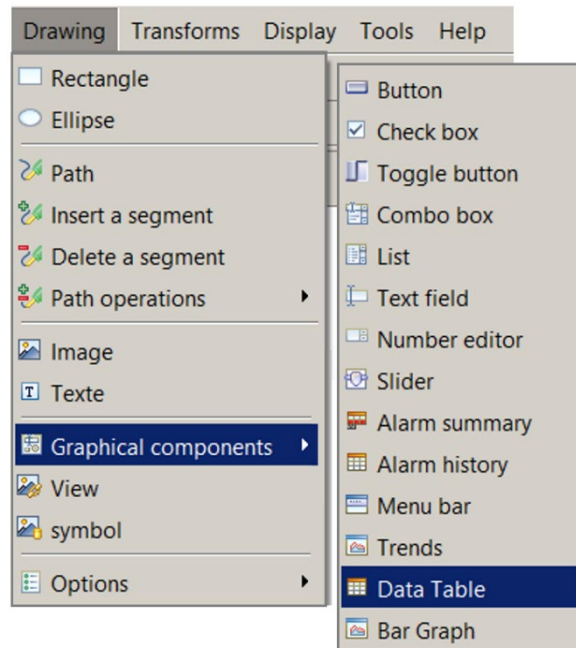
Contents

ViewON 4.5 -Added graphical component	4
Data Table Object (Historical)	4
Bar Graph Object	5
ViewON 4.5 - Updated graphical component	7
Trends Object	7
ViewON 4.5 - Features and Fixes Review	9
Background colors	9
Images Library	9
New Symbols	10
New Fonts	10
Mobile Native Keyboard (Disabled)	10
viewON Online Help	11
ViewON 4.2 - Fixes.....	11
ViewON 4.1 - Features Review	12
Display Ewon URL to access viewON app after download	12
Save As feature	13
Export & Import a project	14
Export a project	14
Import a project	15
Constant values for the Symbol Parameter	16
ViewON 4.1 - Fixes Review	17
Screen import with jpg	17
Duplicate ID's when copy/pasting grouped elements	17
No message if timeout during the Ajax request (tag value read)	18
viewON JS don't wait for the timeout to retry when reading tags	18
Copy/paste of multiple objects does not work properly	19

ViewON 4.5 -Added graphical component

Data Table Object (Historical)

Top Menu Bar: Drawing\Graphical components\Data Table



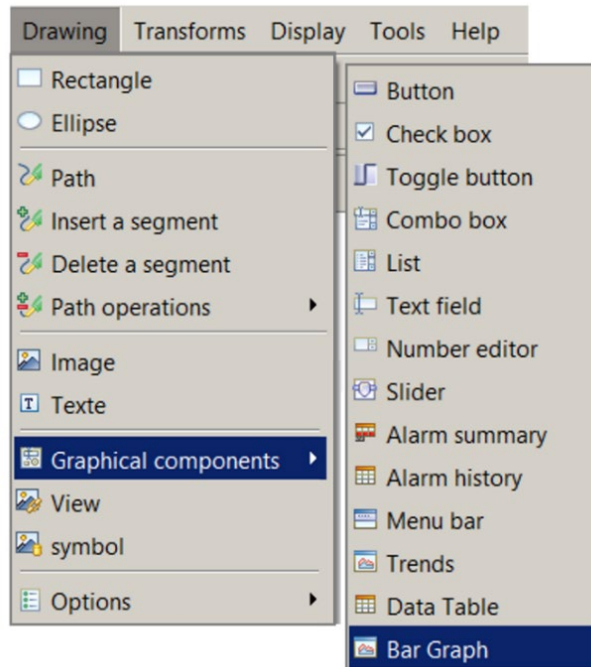
The new Data Table object displays the data from the **\$dtHT** export block descriptor like in the web interface of the Flexy.

TimeStr	My_FloatingPoint_tag1	My_FloatingPoint_tag2	My_Integer_tag1	My_Integer_tag2
23/12/2021 06:38:00	-24.5	5.1	41	25
23/12/2021 06:38:30	-14.00001	85.39997	7	2
23/12/2021 06:39:00	-3.500009	59.89999	41	25
23/12/2021 06:39:30	6.999985	46.39999	7	2
23/12/2021 06:40:00	19.59999	15.8	16	9
23/12/2021 06:40:30	30.09999	0	107	66
23/12/2021 06:41:00	40.6	80.29997	16	9
23/12/2021 06:41:30	51.10003	54.79999	107	66
23/12/2021 06:42:00	63.70007	48.69999	16	9
23/12/2021 06:42:30	74.20013	23.2	107	66
23/12/2021 06:43:00	-17.5	5.1	16	9
23/12/2021 06:43:30	-7.000004	87.69997	107	66
23/12/2021 06:44:00	5.59999	57.09999	7	2
23/12/2021 06:44:30	16.09999	43.59999	41	25
23/12/2021 06:45:00	26.59999	18.1	7	2

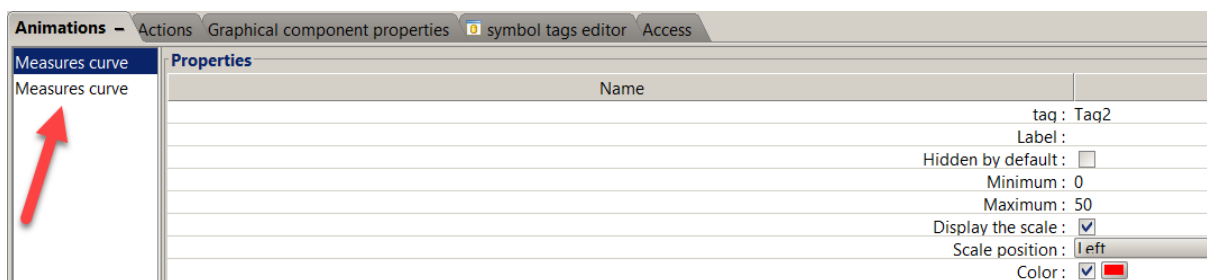
Bar Graph Object

Top Menu Bar: Drawing\Graphical components\Bar graph

A new bar graph object has been created based on the existing Trend object.



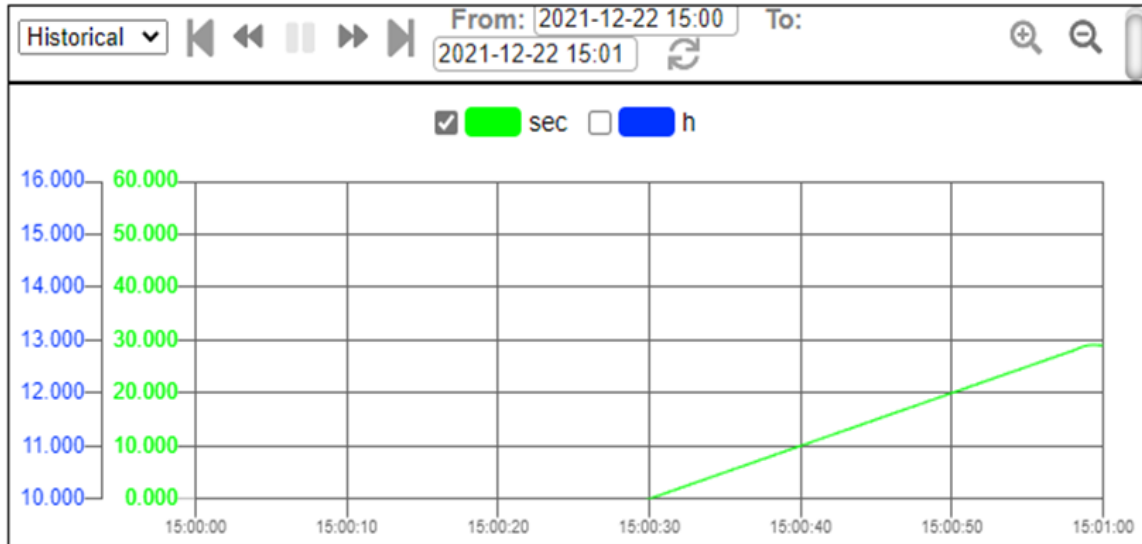
To configure it, you have to declare some “Measures curve” like in the standard Trend object.



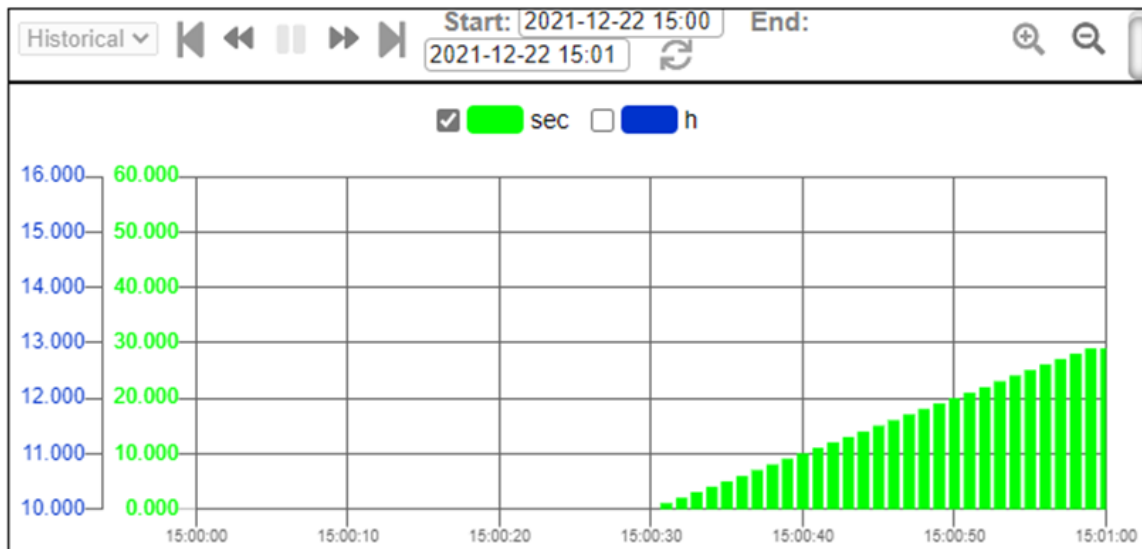
A bar is displayed for each tag defined in the object when there is at least one record.

Example: Trends vs Bar Graph

Tag value displayed in a "Trend"



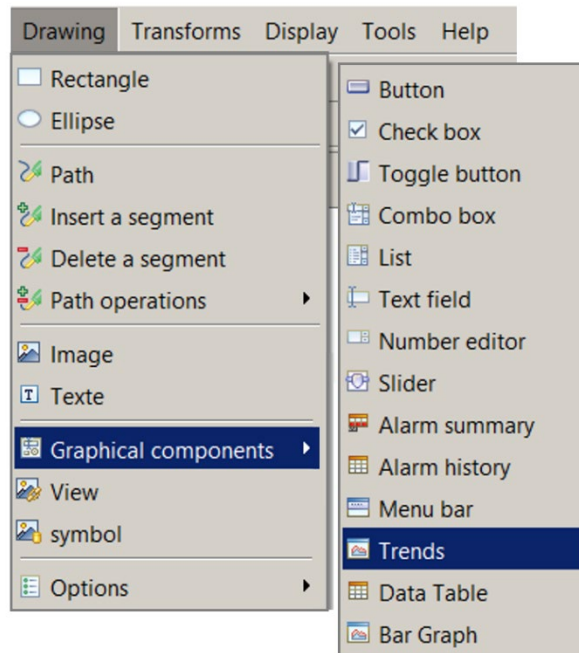
Same Tag value displayed as a Bar Graph



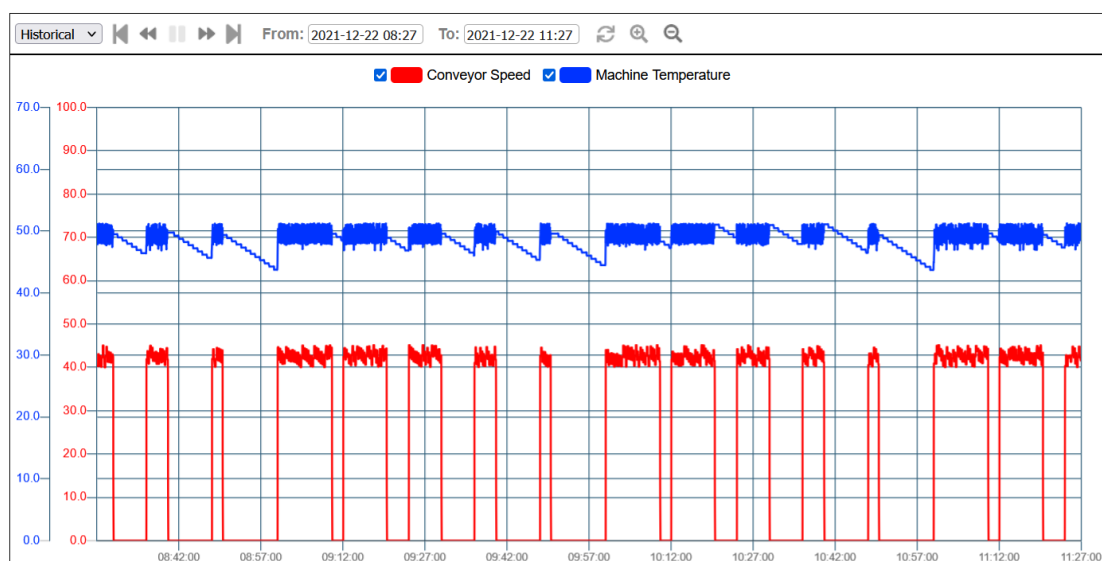
ViewON 4.5 - Updated graphical component

Trends Object

Top Menu Bar: Drawing\Graphical components\Trends



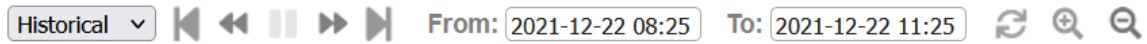
The Trend object has been refactored completely.



Note: No action needed for existing viewON project already including a trend

Here are the main improvements:

Header icons refactoring



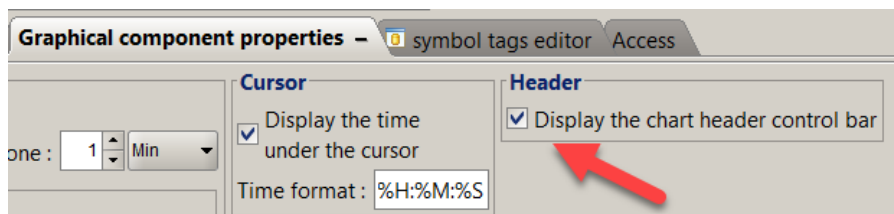
Data Collection from binary EBD: faster loading

Ewon data are now retrieved through a single binary data file (\$dtHL\$ftB) which makes the loading much faster than before.

Curve selection in LIVE view



Chart header display option



Loading GIF during Data collection

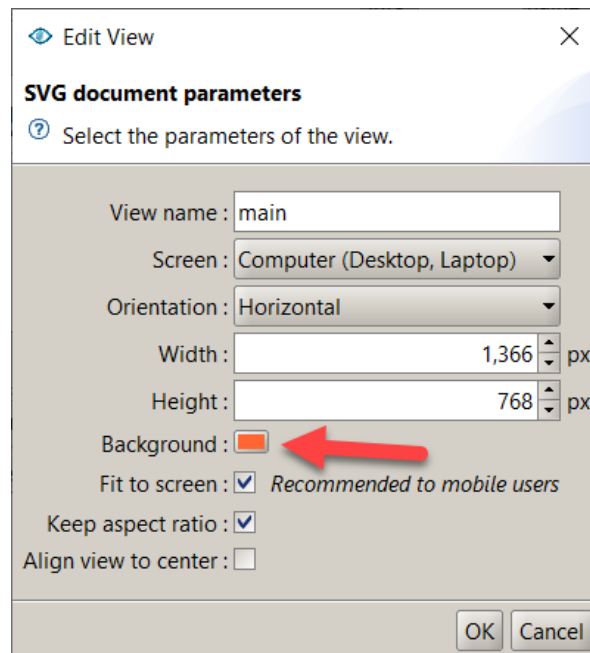
A loading wheel is now displayed informing the user that data are being downloaded.



ViewON 4.5 - Features and Fixes Review

Background colors

You can now customize the color of your background view from the view properties.

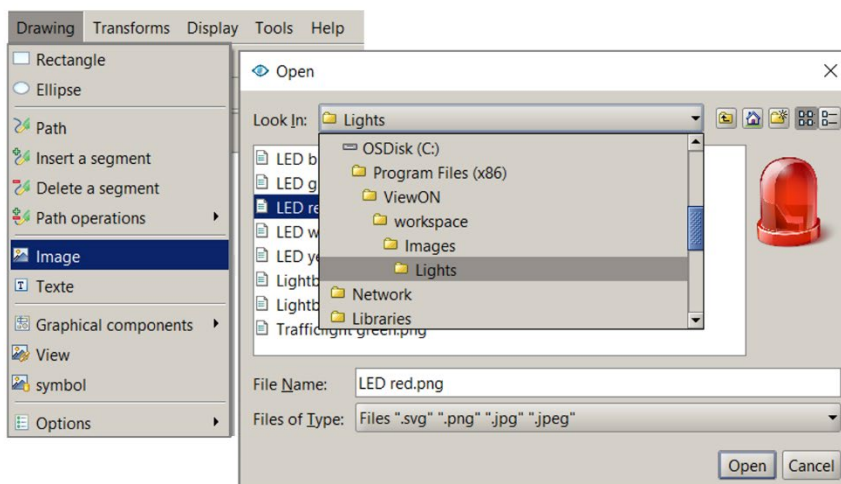


Images Library

A images library has been added into the viewON installer.

You can use them easily in your dashboard by adding an image object and select the image you want to use from the library.

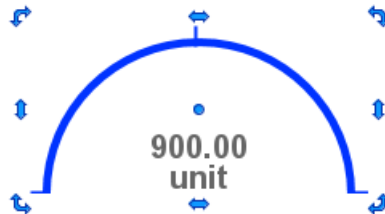
You will find the Image directory in **C:\Program Files (x86)\ViewON\workspace\Image**



New Symbols

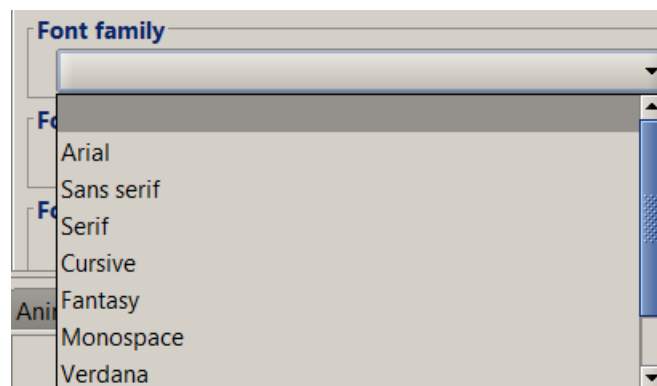
6 new symbols added: C:\Program Files (x86)\viewON\workspace\symbols

Symbols must be copied manually into your directory “...\my document\viewON Projects\Symbols”



New Fonts

Arial [Default], **Verdana**, **Courier** & **Impact** are now available for all “Text” objects



Mobile Native Keyboard (Disabled)

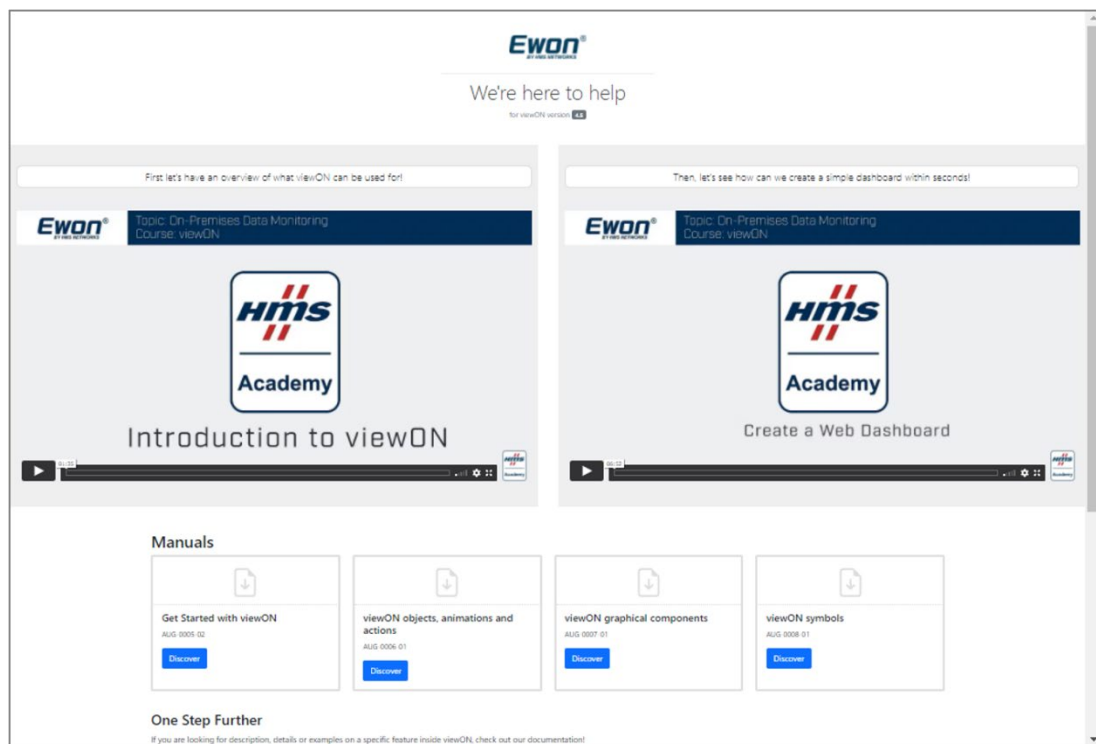
Disable Mobile Device Native keyboard for Analog Tag Input Dialog to prevent view resize at input dialog display.

viewON Online Help

Top Menu Bar: Help\Support Pages



viewON Online Help page is now available to easily find viewON resources, tutorials & news.



[viewON Online Help Link](#)

ViewON 4.2 - Fixes

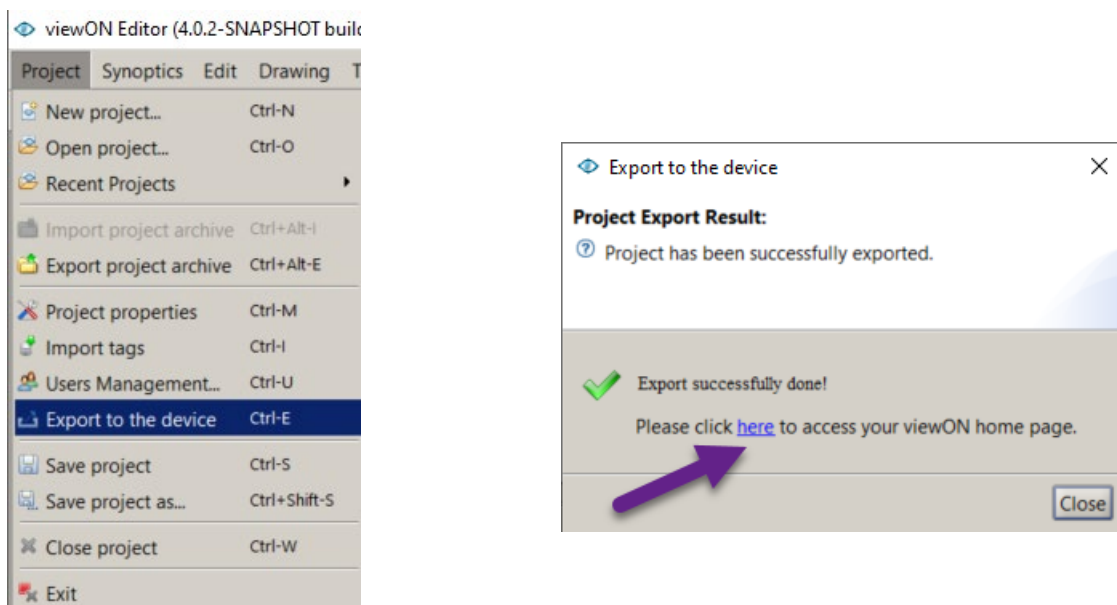
- FIXED: size of "create view" and "view properties" dialog windows
- FIXED: Fit to screen option in view properties dialog not always saved
- FIXED: export of project with names containing white spaces
- FIXED: reduce size of installer

ViewON 4.1 - Features Review

Display Ewon URL to access viewON app after download

For a new user who downloads the application in the Ewon unit, it is not obvious to know at which URL in the Ewon he will be able to see his application.

Now, the “Export to device” feature displays a link to open directly the viewON project on the Ewon:



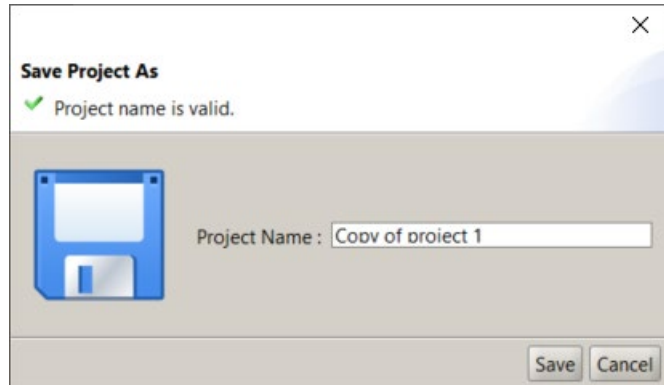
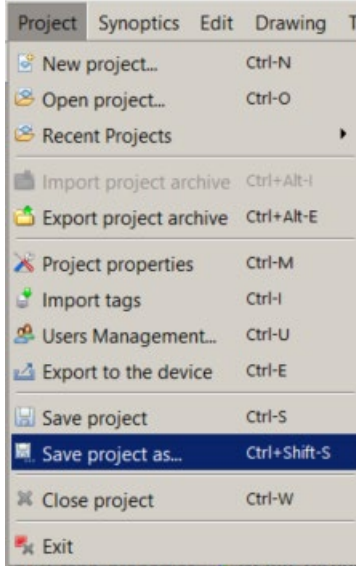
“Click here” will open the web browser on the URL: <http://EwonIPaddress/usr/viewon/index.html>

Feature	Internal ref.
Display eWON URL to access viewON app after download	#7160

Save As feature

Before, it was not easy to create a copy of an existing viewON project.

Now, the viewON application embeds a “Save As” feature:



A copy of the viewON application will be created inside the viewON project folder (Documents\viewON Projects) using the new project name you specified.

Note:

The project can be used as is. If you want to modify or add an animation, you must first connect to an Ewon and upload the list of tags.

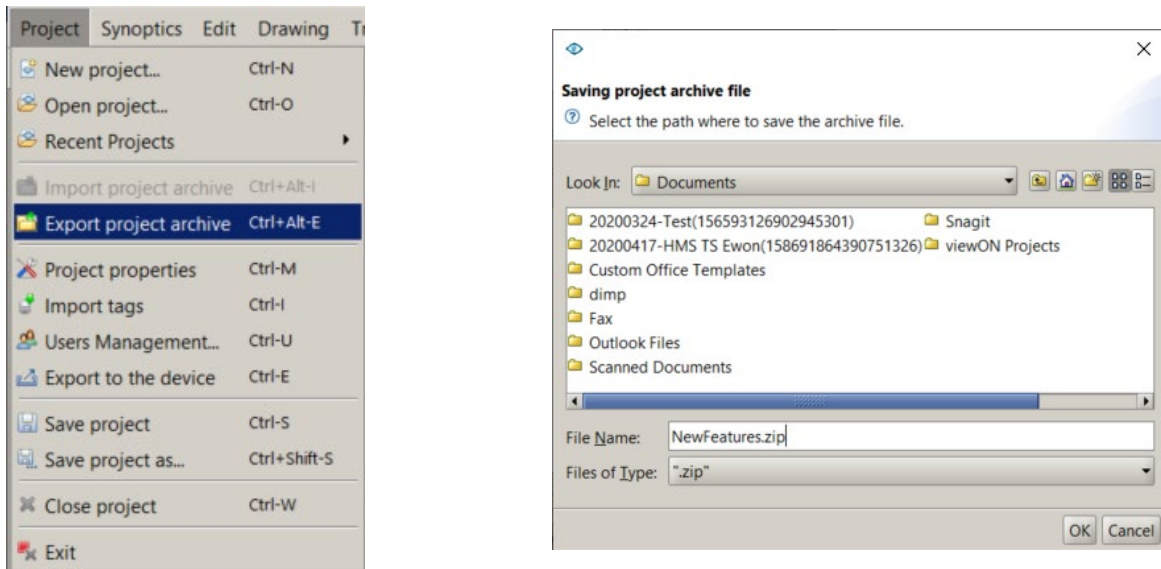
Feature	Internal ref.
Save As feature	#7361

Export & Import a project

Export a project

Before, it was not easy to import a viewON project from one PC to another PC, especially when symbols were used within the viewON project.

Now, the viewON application embeds a “Export project archive” feature:



A zip file is created in the "Documents" folder (or in the folder you specified) on the PC containing the entire viewON project.

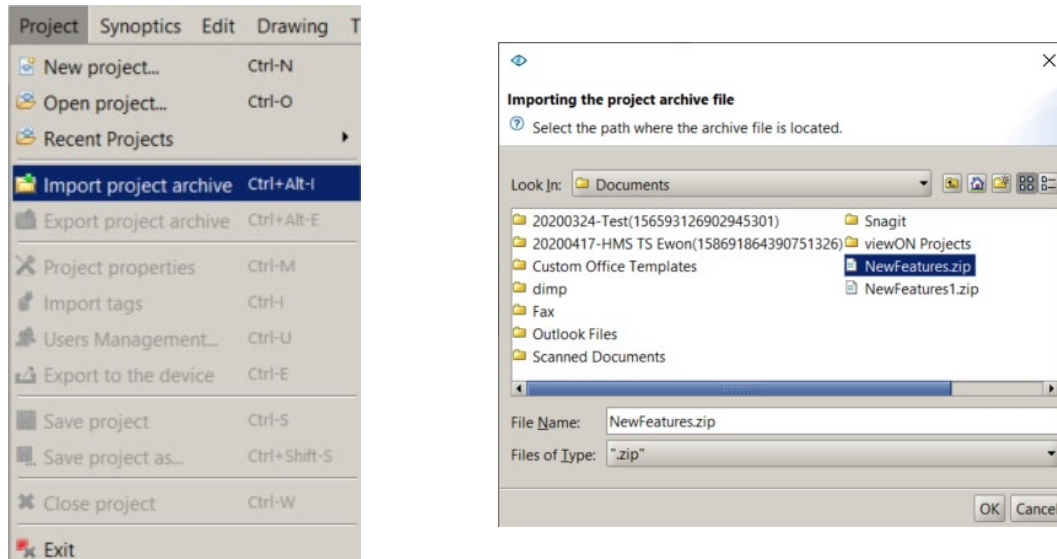
If your viewON project contains symbols, then the project archive will also contain a Symbol folder containing all the symbols you used. This will allow, when you import the project on another PC to import also the symbols.

Feature	Internal ref.
Import and Export feature	#14789

Import a project

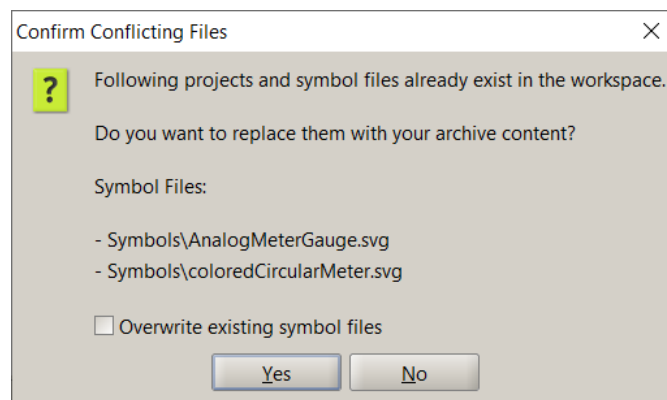
Before, it was not easy to import a viewON project from one PC to another PC, especially when symbols were used within the viewON project.

Now, the viewON application embeds a “Import project archive” feature:



Select the Zip file containing the viewON project archive.

If the archive file contains a project name or symbols which already exists on the PC then a popup window will ask what you want to do:



Select the “Overwrite existing symbol files” option if you want to overwrite the existing symbols with the symbols from the archive.

This will import and extract the archive into the viewON project folder (Documents\viewON Projects). After the import, you can select the project to open it.

Feature	Internal ref.
Import and Export feature	#14789

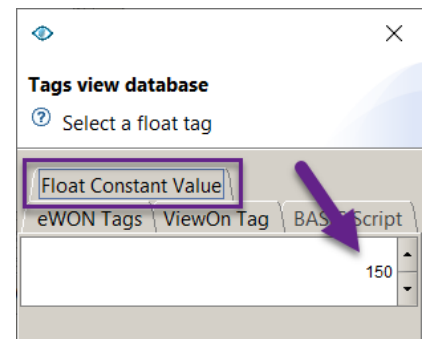
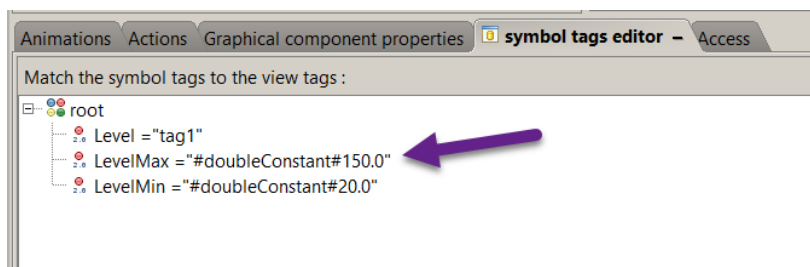
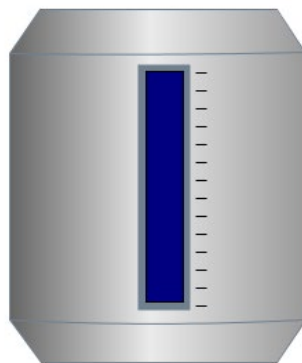
Constant values for the Symbol Parameter

When designing your viewON project, you can use symbols for display and animation. You can use predefined symbols or create your own symbol.

Before, it was not easy to define the min and max value of the animation used inside the symbol. Either you had to 'hardcode' the animation boundaries within the symbol, or you had to use a viewON script tag for the min and max values.

Now, you can also use constant values during the symbol tags attribution.

For example, you can now encode a constant value for the "LevelMax" and "LevelMin" of the "Reactor" symbol.

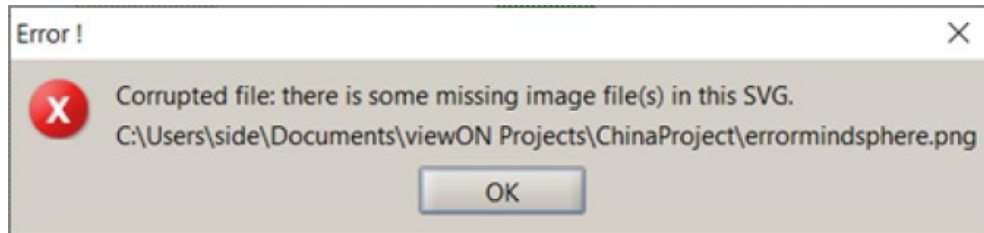


Feature	Internal ref.
Constant values for the symbol parameter	#16982

ViewON 4.1 - Fixes Review

Screen import with jpg

If an image file is missing in the project directory, your views are no longer empty when you open the project in viewON. There is now first an error message box that pops up telling you where the missing file is :



All missing images are replaced by a default picture :

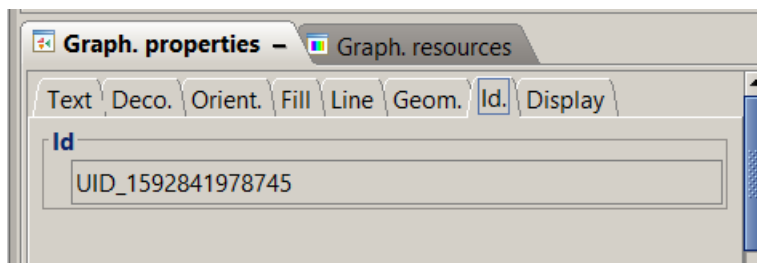


Issue fix	Internal ref.
Screen import with jpg	#10526

Duplicate ID's when copy/pasting grouped elements

When copying and pasting a grouped element, the UID of the nested element remained the same in the original and in the pasted version.

This caused issues when updating tag values or executing functions based on the UID.

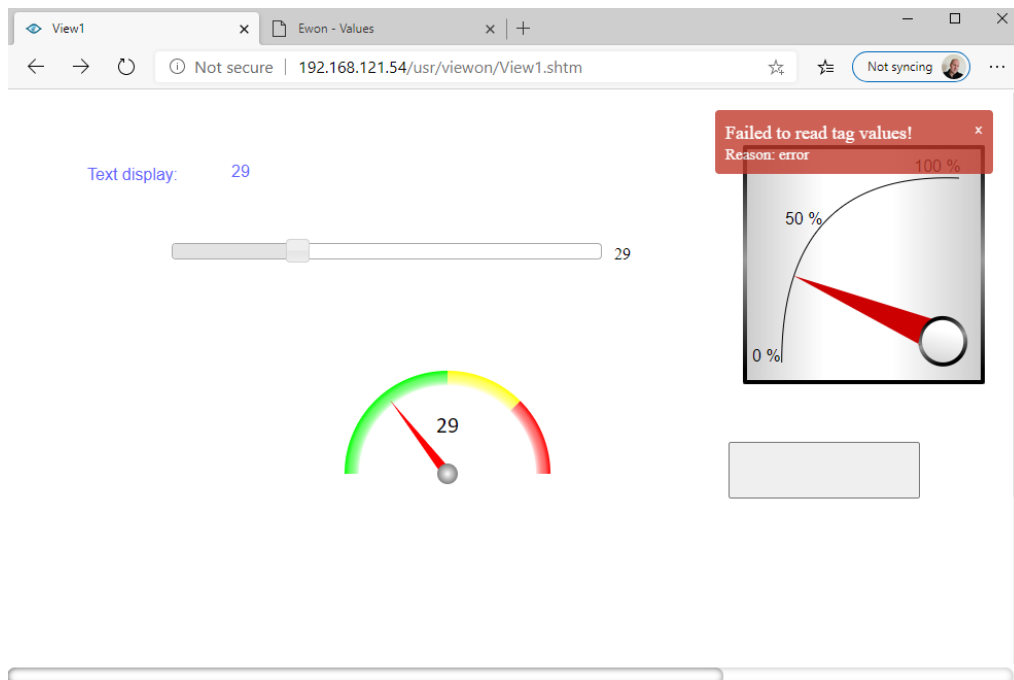


Issue fix	Internal ref.
Duplicate ID's when copy/pasting grouped elements	#11430

No message if timeout during the Ajax request (tag value read)

When the browser lost the connection to the Ewon, then no warning message was displayed.

Now, if the browser has no access anymore to the Ewon, a warning message is displayed in the top right corner of the window.



Issue fix	Internal ref.
No message in case of timeout during the Ajax request (tag value read)	#14388

viewON JS don't wait for the timeout to retry when reading tags

The read timeout was not correctly handled when a communication interruption occurred between the browser and the Ewon.

This could lead to plenty of pending requests and slow down the display when the connection was re-established.

Issue fix	Internal ref.
viewON JS does not wait for the timeout to retry when reading tags	#16606

Copy/paste of multiple objects does not work properly

Inside the viewON designer, if you selected and copied two or more objects, then the pasted objects lost their positions (all objects were overlapping.)

Previously:



Now the pasted objects keep their respective positions.



Issue fix	Internal ref.
Copy/paste of multiple selection of objects does not work properly	#17001