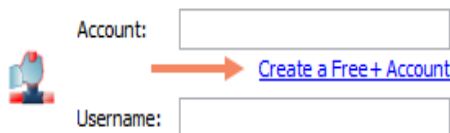


1**Create & Configure your Talk2M Account**

Download & install eCatcher

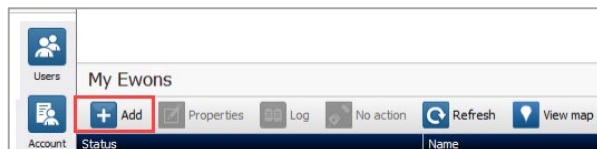
<https://resources.ewon.biz/download/ecatcher>

Create your account* using the “Create a Free+ Account” link



*Account creation require email validation

Log in to eCatcher & add* your first Ewon



*Click on the “Add” button & follow the wizard

2**Create your setup files [USB]**

On the Talk2M Connectivity screen,
Click on “Launch Setup Wizard” in the USB/SD Card option

USB / SD Card



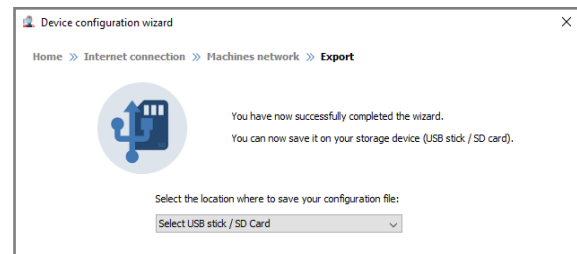
Launch Setup Wizard

The setup wizard will ask you for:

- System settings such as password, language, and clock settings
- WAN (Internet side) settings such as the APN (access point name) associated with your cellular plan and any required username, password, or PIN (from your SIM card provider)
- LAN (machine side) settings such as IP address.

Proceed to follow the Wizard

Save the configuration files created by the Wizard to a USB stick



3

Configure your Ewon device

Prepare your Ewon device for Internet communication:

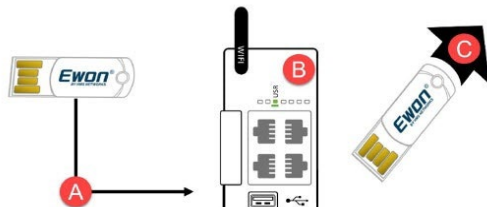
Connect the appropriate antenna to the SMA port
Insert a SIM card into the SIM tray on the back of the device



Connect your Ewon device to power

When the Ewon device has fully booted, the **USR LED** will slowly blink **GREEN**

Insert the USB configuration key into the Cosy+



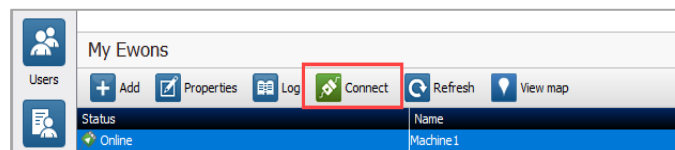
When the Cosy USR LED state changes to solid **GREEN**, remove the USB key & wait
The Cosy will reboot, test the configuration & establish the connection with Talk2M*

*This operation can take several minutes

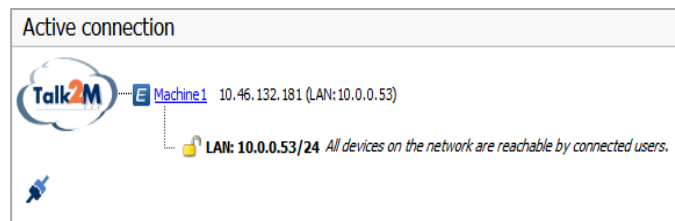
4

Connect to your remote device

In eCatcher, the status of your Ewon device should now be **"Online"**
Simply highlight your Ewon device and click **"Connect"**



**Your setup is now complete !
Congratulations!**



Visit

<https://www.ewon.biz/technical-support/support-home>
for detailed instructions and more information about connecting to your model PLC